

Colonial Pipeline Company

Regional Response Team Meeting
Jersey City, NJ
6/14/18





Colonial Pipeline Company

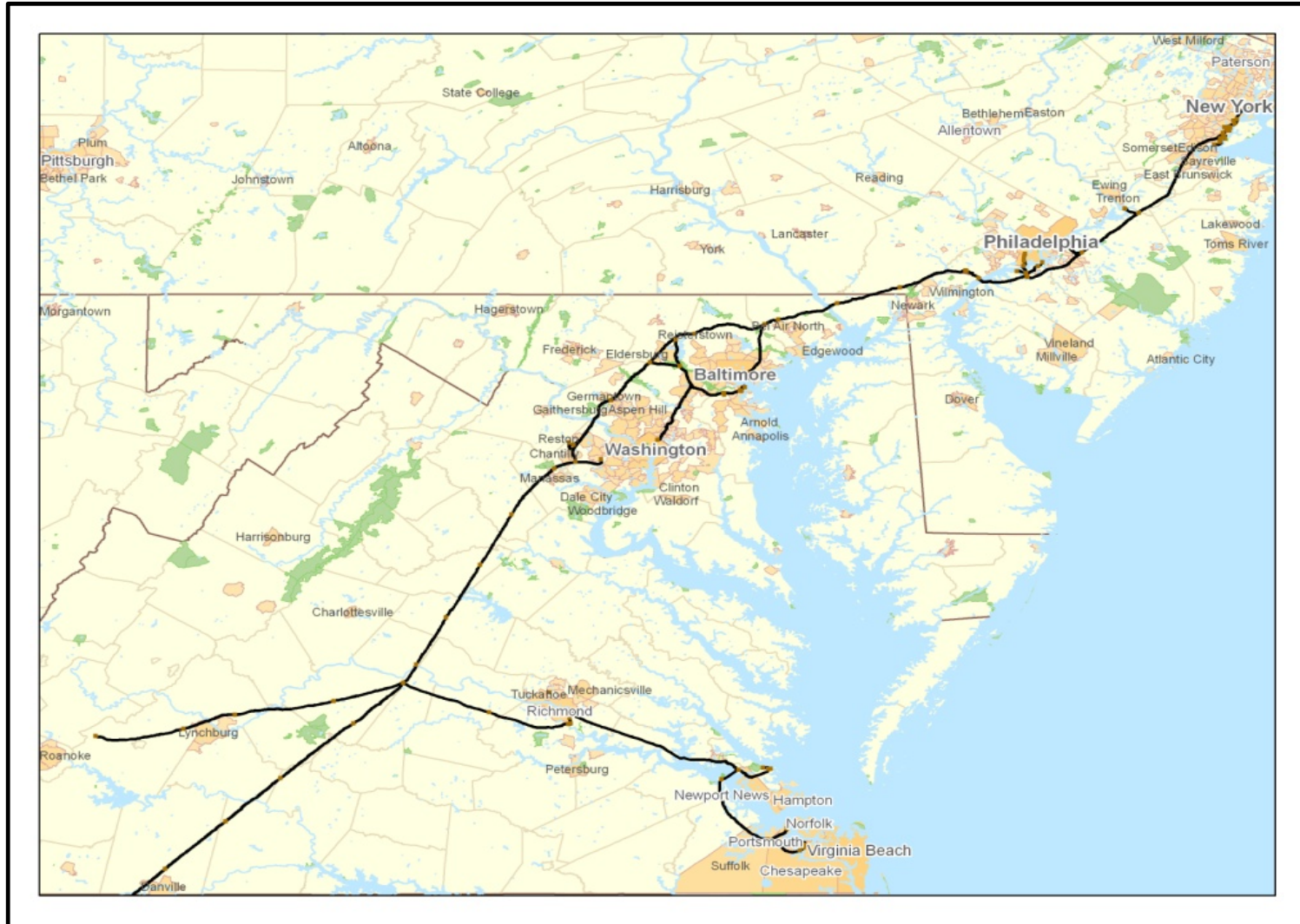


- Interstate common carrier of refined petroleum products:
- Headquartered in Alpharetta, GA
- Pipeline stretches from Houston to New York harbor (5,500 miles)
- 15 tank farms w/storage capacity of 1.2 billion gallons
- Operates 24/7/365
- Transports approximately 100 million gallons per day

Originally constructed in 1962 in largely rural areas; With population encroachment over the years, Colonial is now in many residential areas



The Northeast District





Linden Junction





Linden Junction



IHT - Intra Harbor Transfer

For questions and transportation requests please contact the Colonial Linden scheduling office:

Primary: (732) 734-2036

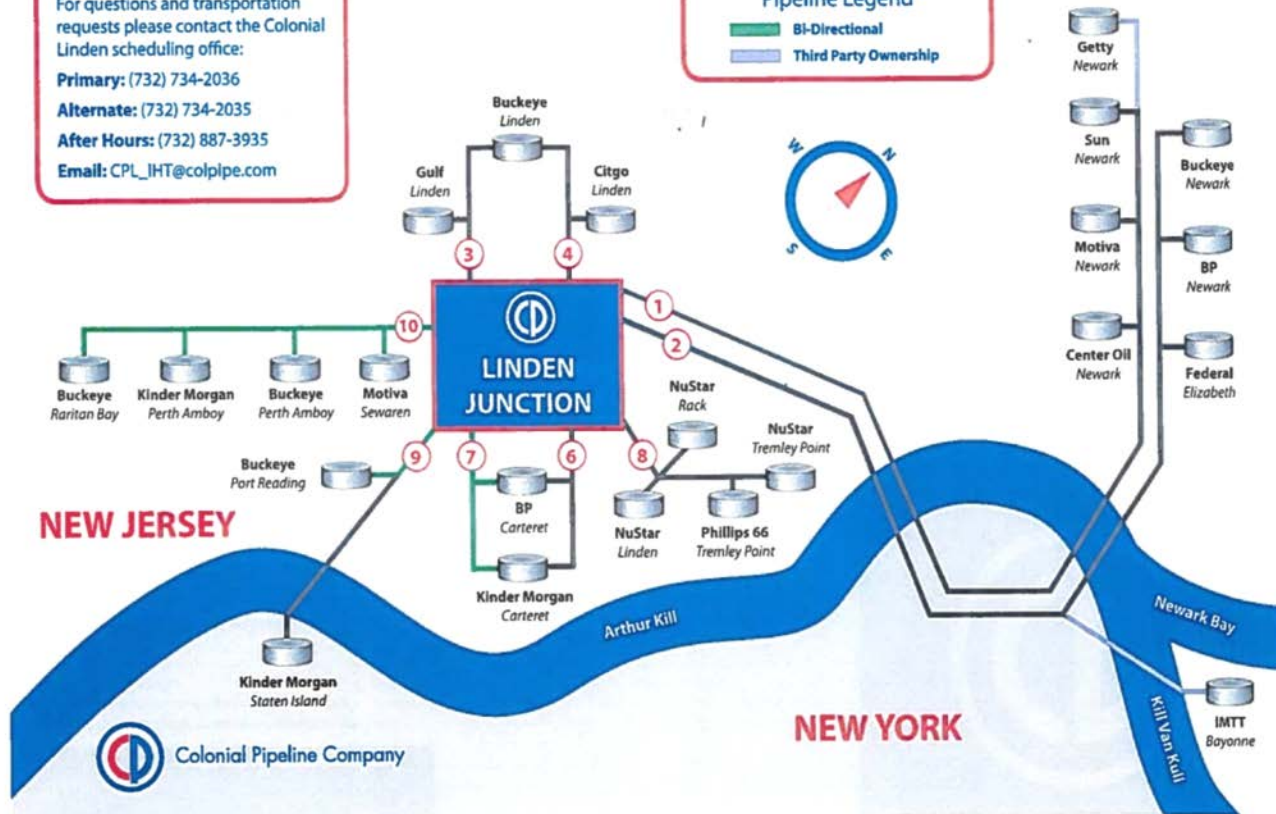
Alternate: (732) 734-2035

After Hours: (732) 887-3935

Email: CPL_IHT@colpipe.com

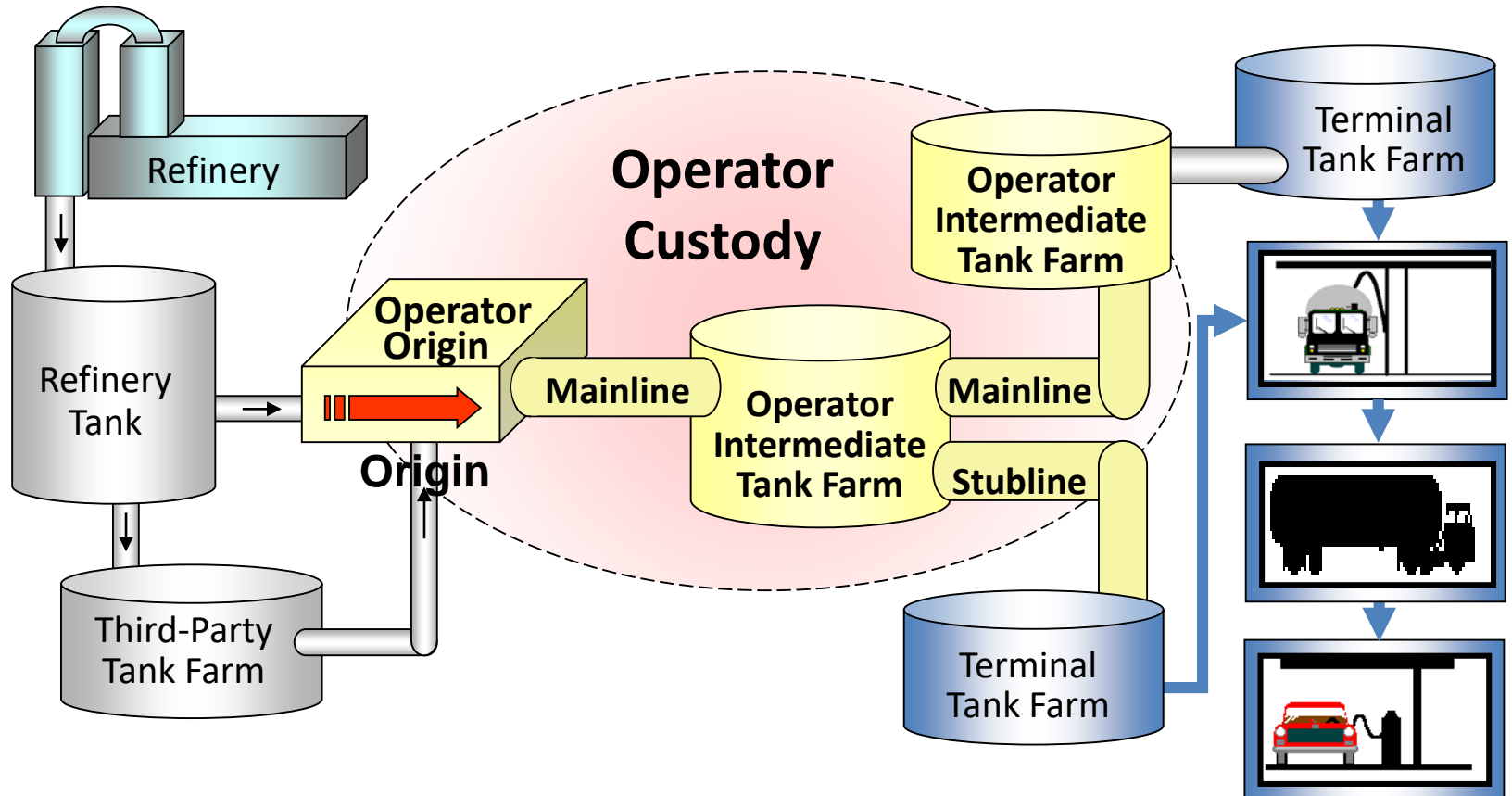
Pipeline Legend

- Bi-Directional
- Third Party Ownership





How Product Gets to You





Product Integrity During Movement

- ◆ Refined product pipelines ship different grades of gasoline, diesel fuel, home heating fuel, kerosene and jet fuel.
- ◆ Different product batches are “pushed” through the system abutting each other. The product is kept in turbulent flow to minimize interfaces.



Conventional Regular Gasoline	RBOB (gasoline blendstock)	All premium grades	Kerosene Jet Fuel	High Sulfur Diesel Fuel	Low Sulfur Diesel	Ultra Low Sulfur Diesel
-------------------------------------	----------------------------------	--------------------------	----------------------	----------------------------	----------------------	----------------------------

- Pipelines use optimum sequencing of product grades to reduce the potential for contamination and/or downgrading of the products transported.



System Integrity Cornerstones

Integrity Management Plan

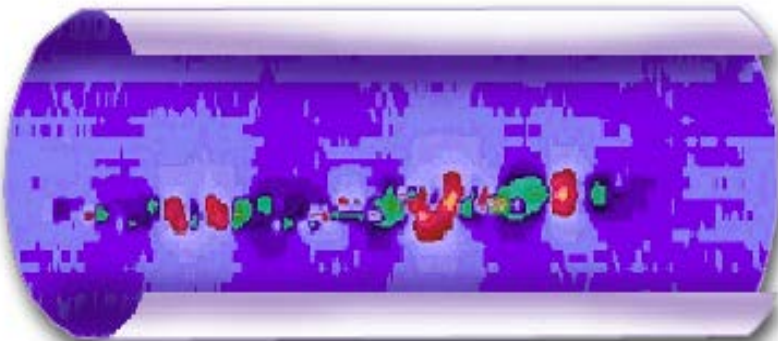
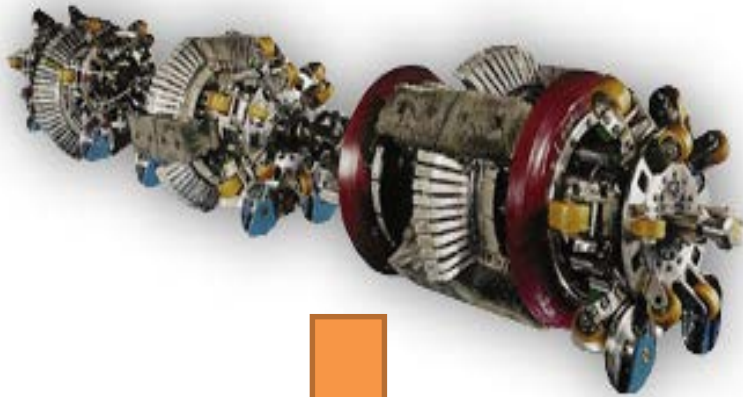
Damage Prevention Plan

Public Awareness

24-7, 365 Monitoring



Integrity Management



■ In-line Pipeline Inspection

- “Smart Pigs” are inserted in the pipeline to assess structural integrity
- Internal sensors in smart pigs detect dents, corrosion, and other imperfections
- Imperfections are analyzed to identify potential pipe sections that require repair or replacement
- Criteria and timelines are established for repair



Integrity Management

- **Corrosion Prevention**
 - Installation of impressed current corrosion control systems at various locations along the pipeline
- **Facility Management**
 - Assessment and maintenance of Colonial facilities to ensure system integrity





Damage Prevention

Colonial Pipeline Markers



Colonial **ORANGE**
Marker Post

International NO
DIG Symbol

Required
WARNING Notice

Product Carried
in the Pipeline

Company Name &
24/7 Emergency Phone
Number



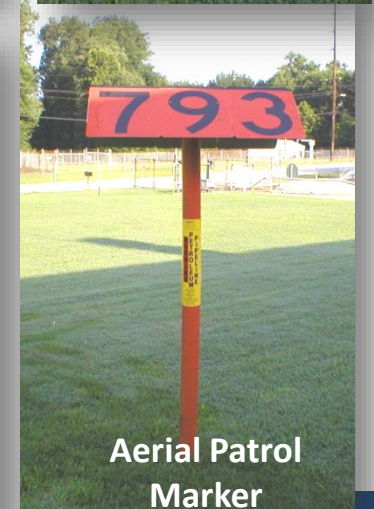
Vented Marker:
Pipe in Casing



Plastic Pole
Marker:
Playgrounds, Parks



Pole Marker:
Marks change in
line direction



Aerial Patrol
Marker



Damage Prevention



■ Aerial Patrol

- Bi-weekly aerial patrols of the pipeline right of way, looking for evidence of leaks or threatening activity
- Emergencies radioed to staffed facilities for investigation

■ Ground Patrol

- Inspectors locate pipe; inspect all construction and excavation activity
- Oversee mowing and side-trimming activities



■ ROW Watch Program

- Colonial offers a cash reward to individuals who report activities/conditions that may threaten the integrity of the pipeline



One Call System

■ One-Call/Buried Pipeline Locating

- Law requires that individuals/businesses call 811 to file an excavation request prior to digging
- Call is routed to state One Call Center, which contacts all applicable underground utilities
- The operator receives notification, sends an inspector to mark the line
- The requester can then dig safely, respecting the marked lines



**Know what's below.
Call before you dig.**





Alpharetta Control Center

- State-of-the-art Control Center monitors the system 24/7.
- Trained Controllers remotely operate the pipeline.
- SCADA updates every 4 secs.
- The pipeline is shut down and isolated if an emergency occurs.





Emergency Notification Process

Control Center

- Receives call or indication of a release

Local Facility

- Receives call or indication of a release

Investigation & Notification

- Follow procedures to validate
- Shut down/isolate the system
 - Begin notifications

Colonial Pipeline Company EMERGENCY NOTIFICATION FLOWCHARTS

Linden Junction
400 Blair Road Avenel, NJ 07001
732-734-2031

Employee Is Notified, or Discovers, that an Emergency Exists.
Employee Receiving The Notification Is To Record The Name And Phone Number Of The Individual Making The Notification And Complete The Leak Report and Checklist (Form 7082).

FIRST: Notify Atlanta Controller - Voice Line – 800-926-2728 if spill ≥ 5 gal.
If required, District Operations Initiates a Group 8 notification and/or the Atlanta Controller initiates a Group 4 notification.
If spill < 5 gal, follow the THIRD notification requirement below.

SECOND: Notify Police, Fire, and Emergency Management Agencies in Suspected Area.
If necessary, request the nearest staffed location to assist in making the notifications below.

NOTIFY WITHIN 15 MINUTES: New Jersey Emergency Response Center	1-877-927-6337	New York – Staten Island: Notify within 2 Hours: N.Y. 24 Hr. Spill Hotline (DEC)	518-457-7362 (out of state) 800-457-7362 (In state)
Police	911 (if within area)	NY State Dept. Public Services (DPS)	518-474-7080
NJ State Police Dispatch	732-548-2313	Police and Fire	911 (if within area)
Woodbridge Police Department	732-634-7700	Staten Island Police	646-610-5000
Fire (if within area)	911	Fire Department	718-727-1100
Fire Dispatch for Woodbridge, Avenel and Port Reading Fire Departments	732-634-7700		

THIRD: Notify Operation Manager * Al Kressley Work: 732-734-2050 Cell: 732-956-4643
Home: 856-371-0649 * Initiates Group 8 Notification

<p>In the event the Operations Manager cannot be reached immediately, contact one of the three persons listed to the right. In the event one of these people cannot be reached immediately, contact the</p> <p>Manager of Process Safety/Emergency Response * Craig Wyatt Work: 678-762-2244 Cellular: 470-484-2331</p> <p>In the event none of the individuals listed can be reached immediately, the person discovering the spill shall make all necessary agency notifications.</p> <p># See Section 5.01 for Contact Numbers</p>	<p>Environmental Manager * Stan Carpenter Work: 856-381-4683 Cellular: 856-689-1427 Home: 856-582-1859</p> <p>Director of Operations * Clifford Kazmarek Cellular: 678-230-2306 Work: 856-381-4684 * Initiates Group 8 Notification</p> <p>District Project Leader * Todd McClellan Work: 410-970-2141 Cellular: 404-273-4792 * Initiates Group 8 Notification</p>
---	---

Further state and federal notifications will be made by the Operations Manager, Director of Operations, District Project Leader or District Environmental Project Manager following the guidelines of Corporate Procedure 30. The Director of Operations and District Environmental Manager should be consulted in every case, if possible in a timely manner, to ensure regulatory agencies are appropriately notified.

Responsible Parties for government notification, along with contact information, is included in Corporate Procedure 30.

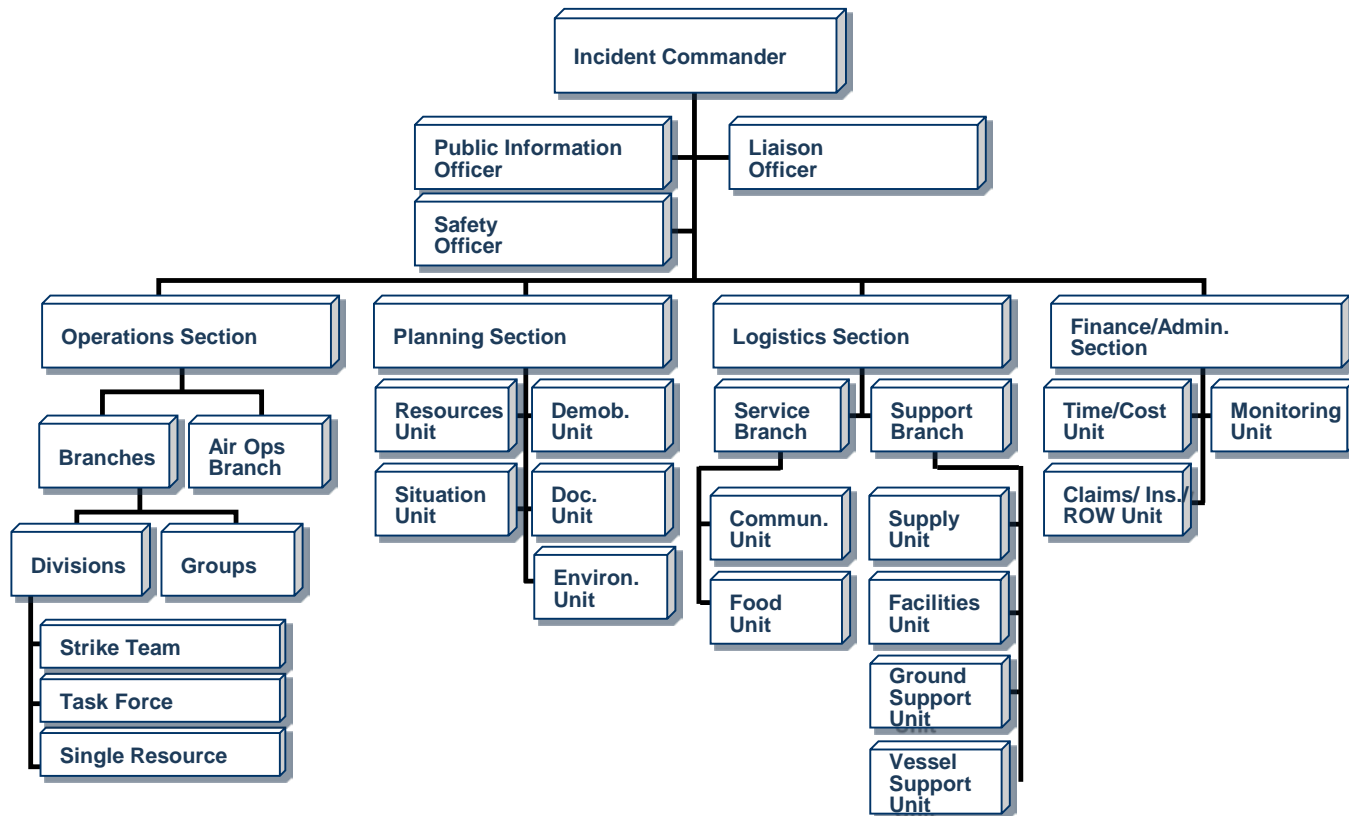


Colonial Tiered Response Levels

- Tier 1 - Local Team
- Tier 2 - District Team
- Tier 3 - Spill Management



Incident Command System



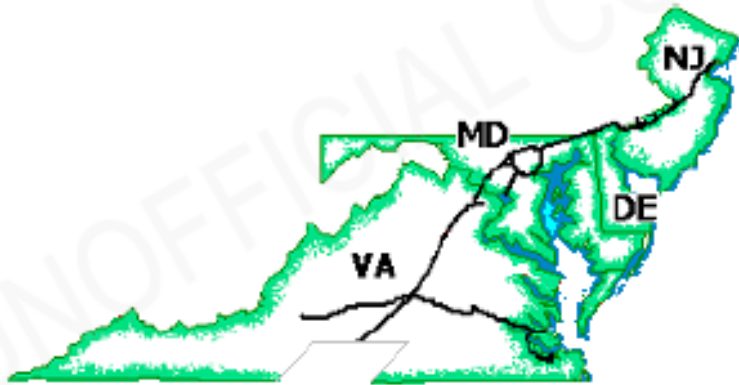


Emergency Response Plan



Colonial Pipeline Company
Emergency Response Plans

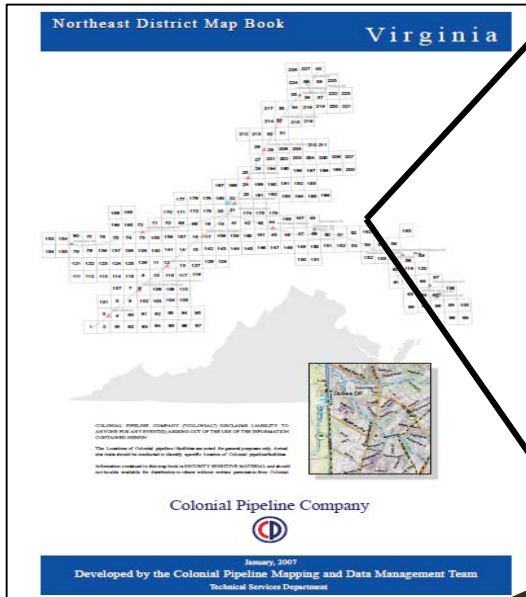
Northeast Response Zone



- INFORMATION SUMMARY
- NOTIFICATION PROCEDURES
- SPILL DETECTION / ON-SCENE SPILL MITIGATION PROCEDURES
- RESPONSE ACTIVITIES
- LIST OF CONTACTS
- TRAINING PROCEDURES
- DRILL PROCEDURES
- RESPONSE PLAN REVIEW
- EMERGENCY RESPONSE INFORMATION



Map Books – Recon & Recovery Sites



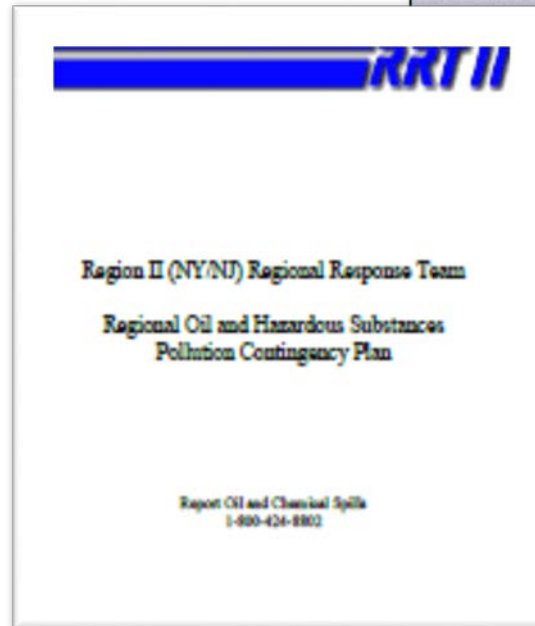
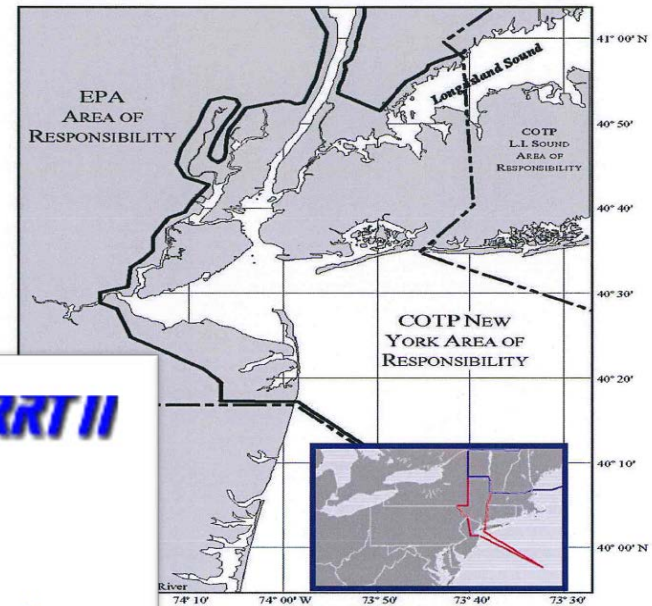
57	NO-19-3	Colonial Parkway/Mill Creek Access	Mill Creek	Colonial Parkway	Primary Highway	Paved Road	All Weather	57	71	< 1 MPH	Yes	Wetlands/Marsh, Rocky, Tree Lined, Brush	Moderate/Medium	Booming	Booming	Contained Booming	200	P, VT	Yes
57	NO-19-4	Colonial Parkway/Halfway Creek Access	Halfway Creek	Colonial Parkway	Secondary Road	Paved Road	All Weather	190	196	< 1 MPH	Yes	Wetlands/Marsh, Grass, Tree Lined, Brush	Slight/None	Booming	Booming	Contained Booming	500	P, VT	Yes
57	NO-19-5	Colonial Parkway/James River Access	James River	Colonial Parkway	Secondary Road	Paved Road	All Weather	1000	1000	Wind Driven	Yes	Sand, Grass	Moderate/Medium	Booming	Booming	Contained Booming	300	P, VT	Yes
57	NO-19-6	Colonial Parkway/Skiffs Creek Outfall	College Creek Outfall	Colonial Parkway	Secondary Road	Paved Road	All Weather	90	108	< 1 MPH	Yes	Wetlands/Marsh, Grass, Tree Lined, Brush	Moderate/Medium	Booming	Booming	Contained Booming	200	P, VT	Yes
57	NO-19-7	Mounts Bay Road/Halfway Creek Access	Halfway Creek	Mounts Bay Road	Secondary Road	Paved Road	All Weather	210	360	< 1 MPH	Yes	Wetlands/Marsh, Grass, Tree Lined, Brush	Slap	Booming	Booming	Contained Booming	400	P, VT	Yes
57	NO-19-8	Bauch Service Road/Brewery Road Dam Access	Bauch Garden Lake	Bauch Service Road	Light-Duty Road	Paved Road	All Weather	1000	1000	Wind Driven	No	Tree Lined, Brush	Slap	Booming	Booming	Contained Booming	200	P, VT	Yes
57	NO-19-9	Carfers Grove County Road/Bauch Garden Creek Access	Bauch Garden Creek	Carfers Grove County Road	Light-Duty Road	Paved Road	All Weather	38	700	< 1 MPH	Yes	Wetlands/Marsh, Grass, Tree Lined, Brush	Slight/None	Booming	Booming	Contained Booming	200	P, VT	Yes
58	NO-19-1	US-60/Skiffs Creek Reservoir Access	Skiffs Creek Reservoir	US-60	Primary Highway	Paved Road	All Weather	330	358	Wind Driven	No	Tree Lined, Brush	Slap	Booming	Booming	Contained Booming	100	VT	Yes
58	NO-19-2	Newport News Skiffs Creek Municipal Water Intake	Skiffs Reservoir	Scenic Court	Light-Duty Road	Paved Road	All Weather	600	650	Wind Driven	No	Tree Lined, Brush	Moderate/Medium	Booming	Booming	Contained Booming	500	P, VT	Yes
58	NO-19-3	Jefferson Avenue/Newport News Reservoir Outfall	Newport News Reservoir	Jefferson Avenue (SR-143)	Primary Highway	Paved Road	All Weather	1000	1000	Wind Driven	No	Tree Lined, Brush	Moderate/Medium	Booming	Booming	Contained Booming	100	VT	Yes
58	NO-19-4	Newport News Park	Newport News Reservoir	Constitution Way	Light-Duty Road	Paved Road	All Weather	957	1000	Wind Driven	No	Tree Lined, Brush	Moderate/Medium	Booming	Booming	Contained Booming	300	VT	Yes
58	NO-19-5	Fort Eustis Blvd/Newport News Reservoir Access	Newport News Reservoir	Fort Eustis Blvd	Primary Highway	Paved Road	All Weather	600	650	Wind Driven	No	Rocky, Tree Lined, Brush	Moderate/Medium	Booming	Booming	Contained Booming	500	VT	Yes
58	NO-19-6	Plantation Road/Skiffs Creek Access	Skiffs Creek	Plantation Road	Light-Duty Road	Paved Road	All Weather	18	48	< 1 MPH	Yes	Tree Lined, Brush	Moderate/Medium	Booming	Booming	Contained Booming	50	P, VT	Yes
58	NO-19-7	Coleman Memorial Bridge Boat Launch	York River	US-17	Primary Highway	Paved Road	All Weather	1000	1000	Wind Driven	Yes	Bulkhead, Rocky	Moderate/Medium	Booming	Booming	Contained Booming	D		
59	YO-21	Wormley Road/Wormley Pond Access	Wormley Pond	Wormley Road	Light-Duty Road	Paved Road	All Weather	300	350	Wind Driven	Yes	Tree Lined, Brush	Moderate/Medium	Booming	Booming	Contained Booming	D		
59	YO-22	Deright Blvd/Harwood Mill Creek Access	Harwood Mill Creek	Deright Blvd (SR-173)	Secondary Road	Paved Road	All Weather	20	40	to 3	No	Tree Lined, Brush	Slight/None	Booming	Booming	Contained Booming	100	VT	Yes



Contingency and Tactical Response Plans

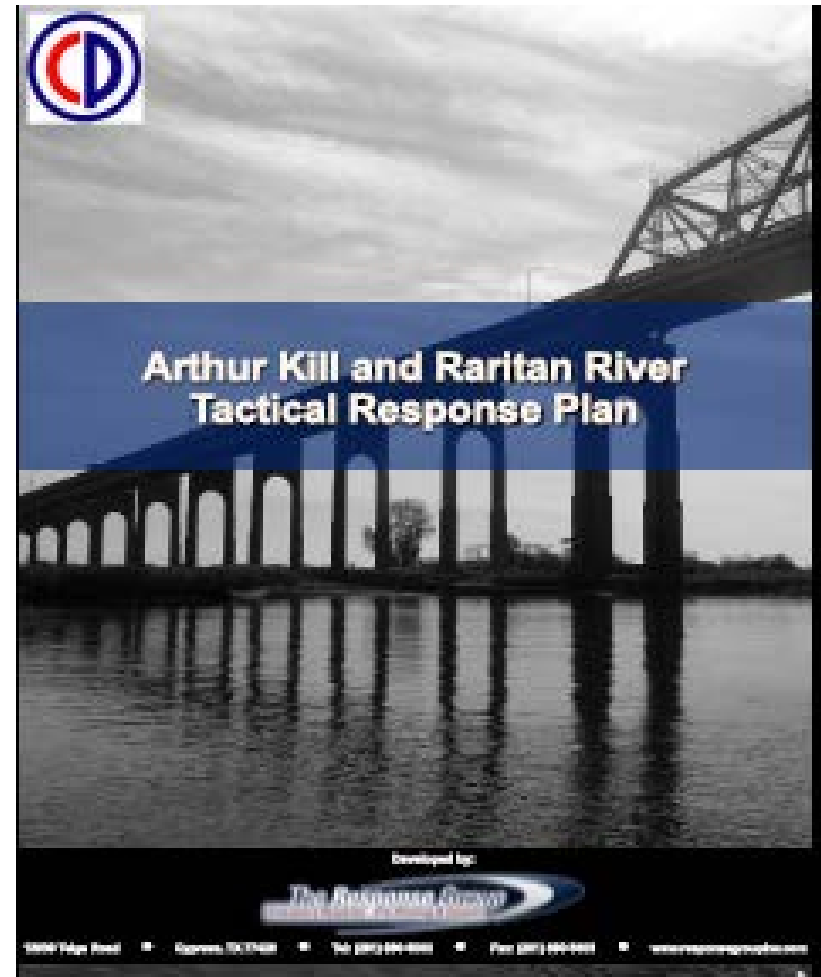
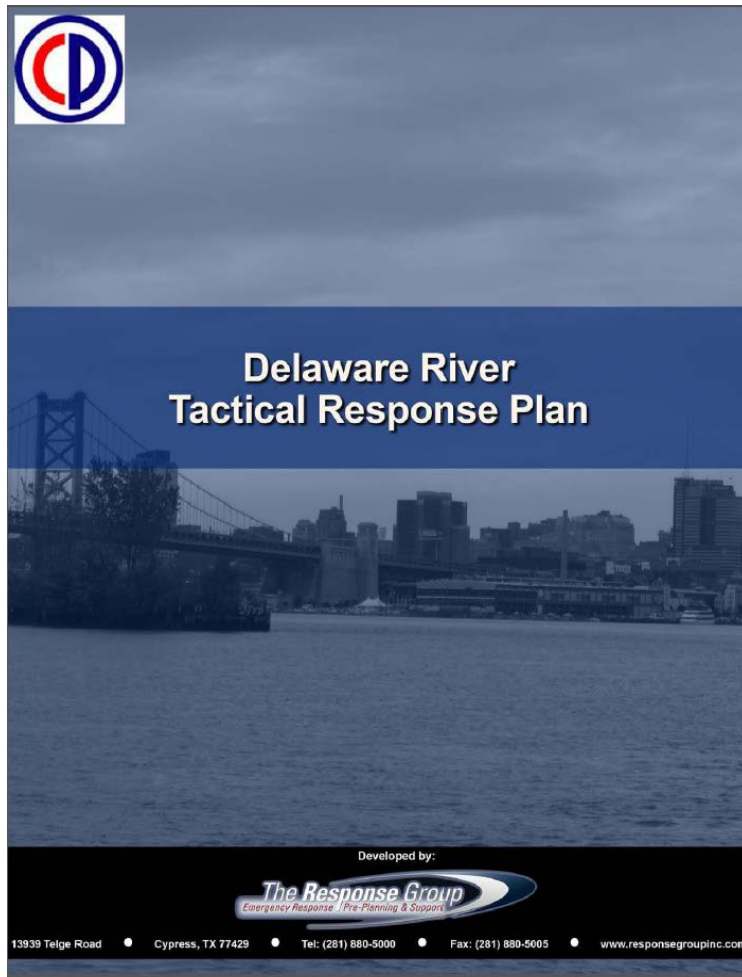
- USCG ACP – Geographic Response Plans
- RRT II Contingency Plan
- Colonial Tactical Response Plans

New York and New Jersey Area Contingency Plan



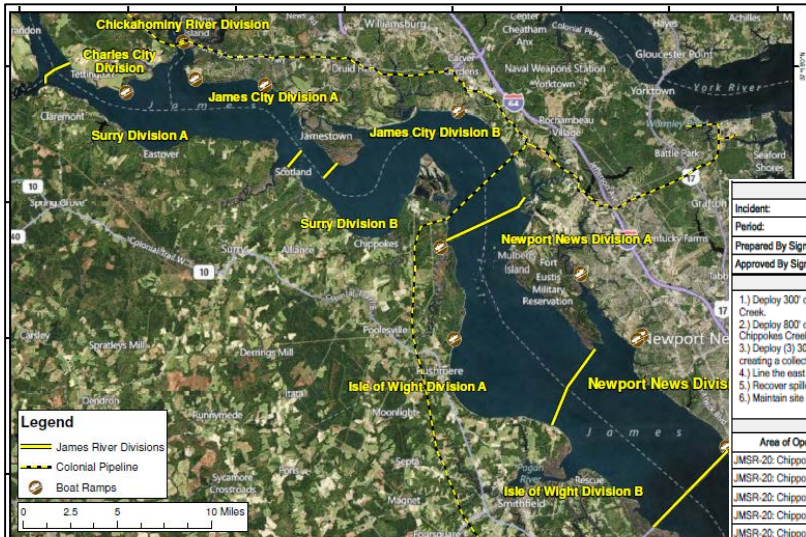


Tactical Response Plans





Tactical Plans - Contents



ICS 204 - Assignment List	
Incident:	Branch:
Period:	Division/Group:
Prepared By Signature:	Task Force: JMSR-20: Chippokes Creek
Approved By Signature:	

- Assignments**
- 1) Deploy 300' of hard boom in a chevron fashion from the south shoreline to the north shoreline protecting Chippokes Creek.
 - 2) Deploy 800' of hard boom in a chevron fashion from south shoreline to the north shoreline protecting the mouth of Chippokes Creek.
 - 3) Deploy (3) 300' sections of hard boom from the east shoreline towards the James River in a cascading fashion, creating a collection area on the east shoreline.
 - 4) Line the east shoreline with 600' of sorbent boom in the collection area.
 - 5) Recover spilled material with response vessel and skimmer.
 - 6) Maintain site integrity over the course of the response.

Resources Required				
Area of Operation	Resource Type	Description	Quantity	Size
JMSR-20: Chippokes Creek	Boom	Hard Boom	2000 feet	18 inch(es)
JMSR-20: Chippokes Creek	Boom Accessories	Anchor Stakes	27 each	
JMSR-20: Chippokes Creek	Boom Accessories	Boom Anchors	22 each	80 pound(s)
JMSR-20: Chippokes Creek	Manpower: Operator	Vessel Operator	7 each	
JMSR-20: Chippokes Creek	Manpower: Operator	Skimmer Operator	1 each	
JMSR-20: Chippokes Creek	Manpower: Responder	Responder	14 each	
JMSR-20: Chippokes Creek	Manpower: Supervisor	Supervisor	1 each	
JMSR-20: Chippokes Creek	Skimmer	Shallow Water Skimmer	1 each	
JMSR-20: Chippokes Creek	Sorbent Boom	Sorbent Boom	600 feet	5 inch(es)
JMSR-20: Chippokes Creek	Vessel	Response Vessel	1 each	20 feet
JMSR-20: Chippokes Creek	Vessel	Jon Boat	6 each	18 feet

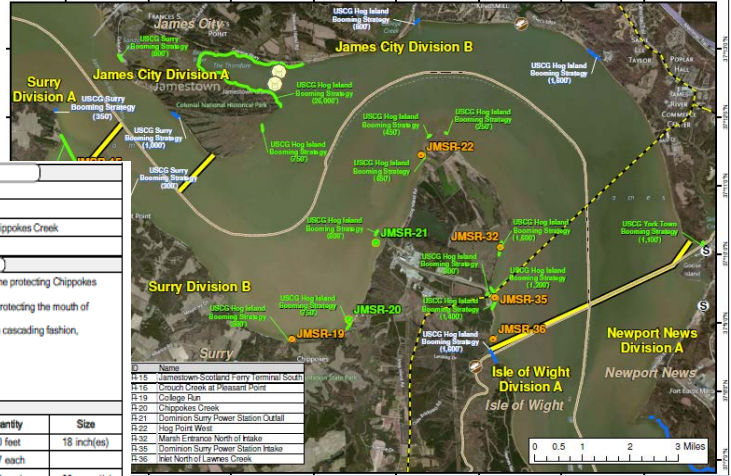
Tactical Objective

Prevent spilled material from flowing down the James River and impacting additional shoreline and other associated communities.
 Manage a coordinated response effort.

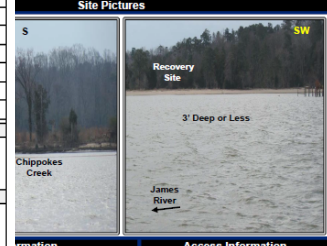
Location of Work

JMSR-20 is located 14.99 miles (as the crow flies) southeast of Jamestown, VA and is 15.8 miles downstream from the Chickahominy pipeline crossing, as well as 8.4 miles upstream from the Hog Island pipeline crossing.

Lat: 37° 9' 2.736" N
 Long: 76° 42' 51.963" W



Surry Division B-JSMR-20 Recovery/Protection		Chippokes Creek	
--	--	-----------------	--



Response Information	
Deployment Strategy:	Recovery/Protection
Response Method:	Low Water: Boom High Water: Protection
Recovery Method:	Response Vessel and Skimmer
Task/Truck Access:	N/A
Additional Pumps Required:	N/A
Hose Required:	N/A
Bridge Height:	N/A

Response Objectives Checklist

- Safety**
- Identify hazard(s) of emitted material
 - Activate emergency services as required (911, Fire, LEPC)
 - Evaluate and secure area if required
 - Conduct air monitoring & site characterization
 - Establish isolation perimeter, safety zones, & evacuation route
 - Prepare/Implement Site Safety Plan & Medical Plan
 - Restrict/secure area to properly equipped & trained personnel
 - Continually evaluate site hazards & risks

Access Information

Site Access: Boat
Road Type: N/A
Road Surface Type: N/A
Road Condition: N/A
Access Location: N/A

Waterway Information

Type of Waterway: River
Average Current Speed: ~1 to 3 mph
Tidally Influenced: Yes
Waterway Width: Low Water: ~400'
 High Water: ~700'

Shoreline Characteristics

Shoreline Type: Trees/Inlet Sand, Brush
Bank Slope: Slight
Bank Height: ~4'
Existing Facilities: N/A

- Response**
- Conduct internal agency & internal notifications
 - Identify and setup staging areas to support response ops
 - Activate response contractors & equipment
 - Implement response tactics to contain & recover product
 - Establish command post & field communications
 - Request flight traffic restriction if required
 - Implement waste handling & disposal procedures as required
 - Initiate decon & demo procedures when appropriate
- Environmental**
- Identify, prioritize, & protect socio-economic sensitivities
 - Identify, prioritize, & protect environmentally sensitive areas
 - Establish wildlife rescue & rehabilitation operation if required
- Support**
- Conduct visual assessments (spill tracking & surveillance)
 - Provide personnel & equipment support as required
 - Establish first aid stations & site security as required

Strategic Objective: Prevent spilled material from migrating down James River and impacting additional shoreline and associated communities.

Lat: 37° 9' 2.736" N
 Long: 76° 42' 51.963" W

Country: Surry
Population Density: Low
Land Use: Recreational

Distance from Chickahominy River Pipeline:
 ~15.8 miles downstream from Chickahominy River pipeline crossing
Distance from Hog Island Pipeline:
 ~8.4 miles upstream from Hog Island pipeline crossing

[View Response Group](#)

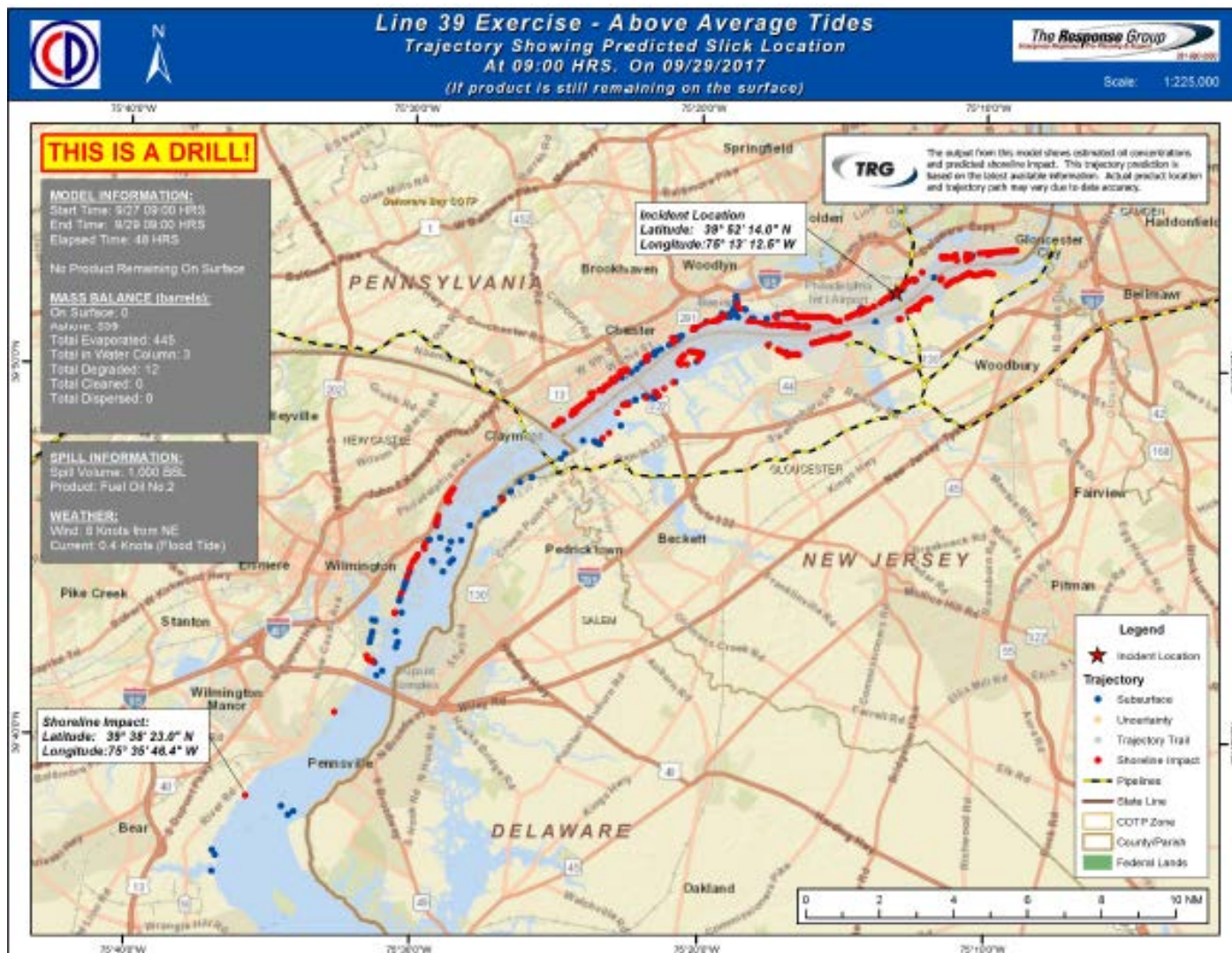
Dist. from Chickahominy P/L Crossing:
 15.8 Miles Downstream

Dist. from Hog Island P/L Crossing:
 8.4 Miles Upstream

Lat: 37° 9' 2.736" N
 Long: 76° 42' 51.963" W

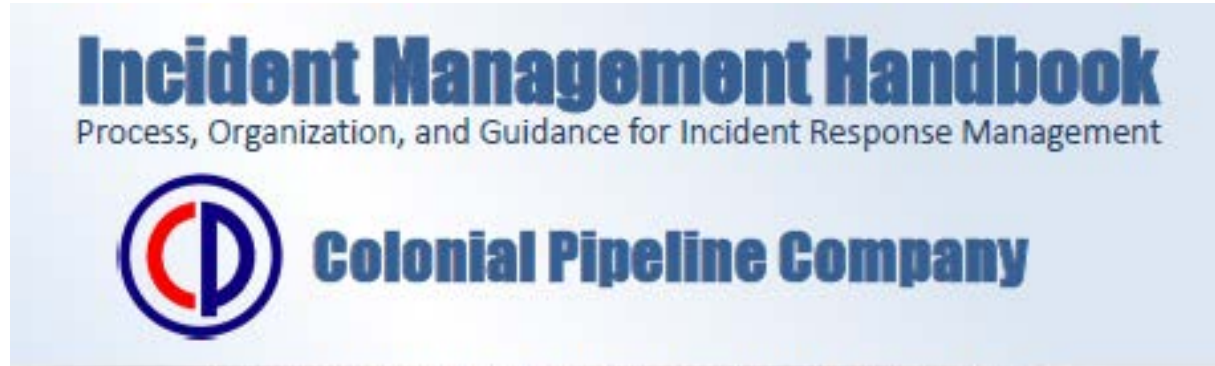


Trajectory Modeling





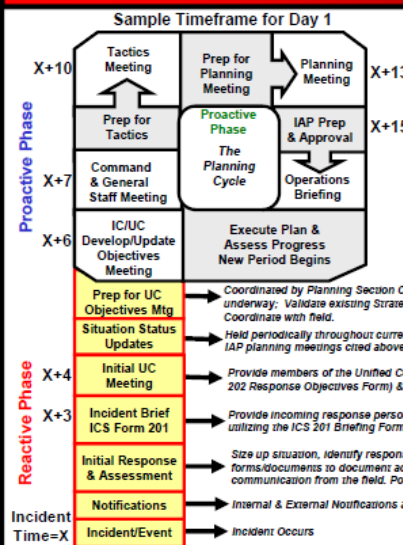
Incident Management Handbook



Planning Cycle Guide Including Position Specific Roles & Responsibilities



Planning Cycle Quick Guide – Reactive Phase



Reactive Phase Summary



U.S. DEPARTMENT OF HOMELAND SECURITY

U.S. COAST GUARD




INCIDENT MANAGEMENT HANDBOOK

May 2014

U.S. Coast Guard
COMDTPUB P3120.17B



Incident Action Plan

IAP Cover Sheet	
Incident Identifier: WV-1 (Advantage) I-77/51 James River Exit	Operational Period to be covered by IAP: Period 1 (01/20/14 06:00 - 01/20/14 07:00)
Assignment key:	
FDIC:	_____
ISDC:	_____
SPC:	_____
<h2>Incident Action Plan</h2>	
	
Prepared By: Brian, Tolsted	Prepared Date/Time: 01/20/14 11:14
IAP Cover Sheet	© 1997-2012 Global, Inc.



Training for Emergency Responders

COLONIAL

- All members of the Colonial Emergency Response Team receive training in:
 - Spill Response Techniques
 - Incident Command System
 - Annual HAZWOPER Training

OSROs

- Annual HAZWOPER Training
- Additional training as required by Coast Guard to retain OSRO status



Education & Drills w/Local Agencies



2017 Meetings w/Local Agencies:

- EPA Region 3 – Philadelphia
- TTX – Bush Gardens, VA
- TTX – Cyber Security, Philadelphia, PA
- TTX – Waterworks, Newport News, VA
- Local FD's & LEPC's



2018 Scheduled Events

- TTX – Woodbury, NJ
- Target September



Critiques and Hotwash

Lessons Learned and Areas for Improvement

Colonial Pipeline Company

Post Emergency Response Review – Significant Spill

Date of spill: June 3, 2013

Location: Yorktown Junction, Williamsburg, VA

District Response Team, Strike Team, or both activated: District Response Team, Group

4 Callout

Attach listing of participants: See attached.

Brief description of scenario: On June 3, 2013, Senior Operator mobilized to site for FSII into storage tank. While making rounds prior to accepting delivery, Operator found broken union on FSII injection pump. Based on tank gauging and record comparison, an estimated 2,486 gallons of FSII was released aboveground. Given proximity to oil-water separator (O/W) and Retention Basin, product appeared to be captured by yard drain discharge. For more detail, see NED-FAC-Yorktown Junction-2013

Significant difficulties encountered during this response? (If yes, briefly describe):

Lessons learned: 1) Ensure valves for O/W Separator and/or Retention Basins are operable. 2) Maintain plugs for outfall headwalls as backup to main valves. 3) FSII Disposal options identified.

Incident Critique	
Incident:	James River PREP Drill
Unified Command	
Things that went well	
Collaboration and partnership between agencies	
Positive attitude among UIC members	
Followed agenda - meetings were smooth; great facilitator (PSC) and documentation	
Check in - logistics - meeting prep.	
Booming strategies were effective - followed plan	
Areas for improvement	
COTP Feedback - Didn't catch all info from initial 201 briefing	
State rep. needs deputy; would have been beneficial to have two reps from the State	
Remove barriers for IC to operate effectively	
Utilize USCG for Ops Chief	
IC Beck - Media News Release could have been better	
Safety	
Things that went well	
Knowledge, experience with IAP software by safety officers	
CTEH and Coast Guard safety expertise and involvement was very beneficial	
Appropriately staffed section (finally)	
Having pre-loaded data in IAP is a good practice	
Areas for improvement	
SIM cell phones weren't answered and we didn't get updates on resource status from SIM cell as was briefed during orientation	
Took too long to order resources once they were requested	
Need to establish medical triage (aid stations) very early on and communicate their locations and functions so that folks don't go to hospitals with non-ER injuries and so that we get better information regarding injuries	
PIO-Legal	
Things that went well	
Having rep from Colonial, USCG, PHMSA (All agencies) together helped communication flow	
Work space was adequate	
Injections were realistic	
Areas for improvement	
Did not have access to the area contingency plan. May need to have access by hard copy; it is on homeport; Colonial Pipeline could not get access.	
Exercise management to keep all sections involved and engaged.	
Incident Critique	Printed: 9/20/2012 06:05 Page 1 of 3 © 1997-2012 dbSoft, Inc.

Colonial Pipeline

Thank You

