



U.S. COAST GUARD SECTOR NEW YORK

RESPONSE - INCIDENT MANAGEMENT DIVISION

INCIDENTS IN THE PORT

October 2016 –April 2017



IMD Activity Summary

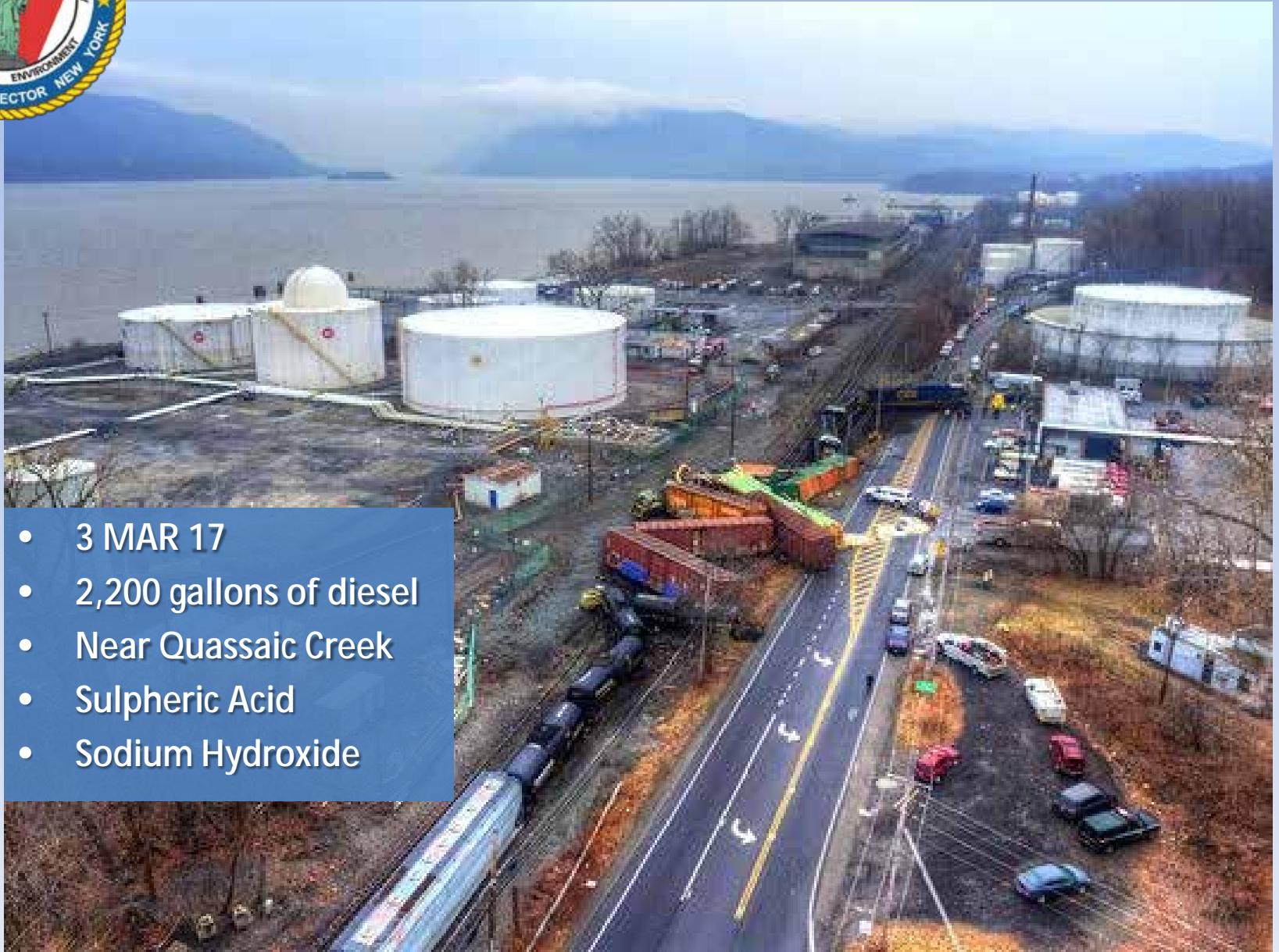
(01OCT2016 to 07APR2017)

- 217 NRC Reports received
- 142 Preliminary Investigations cases initiated
- 25 Incident Investigations Conducted
 - 13 Letter of Warnings
 - 8 Notice of Violations
 - 4 Class I Civil Penalties
- Recommended penalties: \$34,000
- Penalties imposed to date: \$4,350



TRAIN DERAILMENT – NEW WINDSOR, NY

- 3 MAR 17
- 2,200 gallons of diesel
- Near Quassaic Creek
- Sulpheric Acid
- Sodium Hydroxide





TRAIN DERAILMENT – NEW WINDSOR, NY





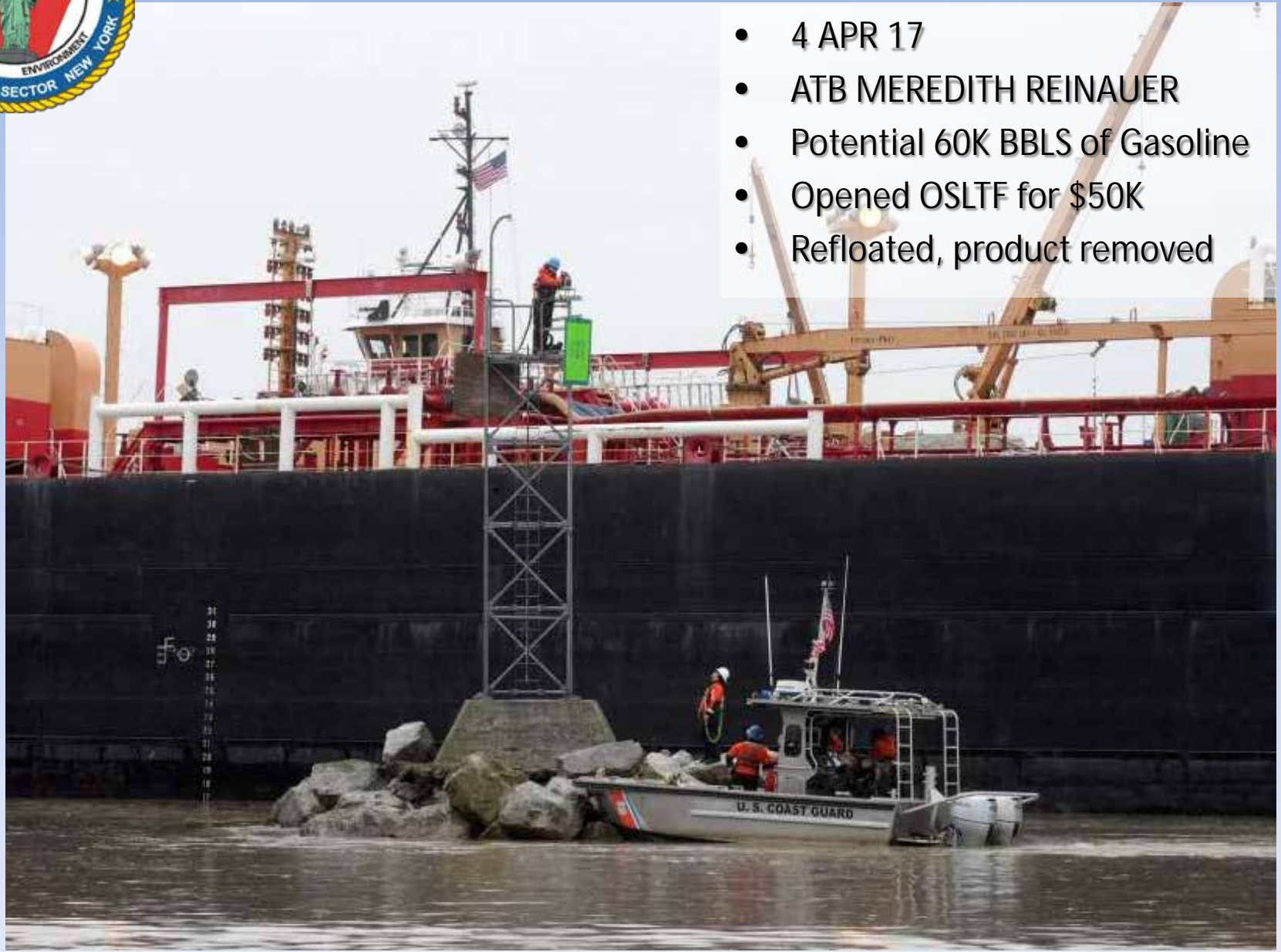
TRAIN DERAILMENT – NEW WINDSOR, NY





BARGE RTC 150 GROUNDING - HUDSON RIVER

- 4 APR 17
- ATB MEREDITH REINAUER
- Potential 60K BBLs of Gasoline
- Opened OSLTF for \$50K
- Refloated, product removed





OIL DISCHARGE - BAYSIDE FUEL OIL DEPOT - Brooklyn



- 30 MAR 17
- 27,000 gals diesel during transfer
- Spill significantly underreported
- OSLTF for \$10,000
- Most of the spill impacted the soil
- USCG, NY DEC, EPA, and NOAA SSC
- Long term soil remediation, waterside oil recovery strategy, and enforcement



OIL DISCHARGE BAYSIDE FUEL OIL DEPOT





OIL DISCHARGE BAYSIDE FUEL OIL DEPOT





OIL DISCHARGE BAYSIDE FUEL OIL DEPOT





Sector NY Pressurized Oil Line Spill (B3402/C3403 MARINA SPILL, JERSEY CITY, NJ)

SITUATION/IMPACT

03OCT: USCG/NJ DEP RESPONDED TO UNDERWATER ELECTRIC TRANSMISSION LINES DISCHARGING DIELECTRIC FLUID IVO NEWPORT MARINA, JERSEY CITY, NJ. EFFORTS COMPLICATED BY DEBRIS ON TOP OF BURIED LINES.

- RP'S: PSE&G, CON EDISON, & NADC
- MEDIA POTENTIAL: HIGH
- POLITICAL POTENTIAL: HIGH
- WCD (6 WEEKS): >200,000 GALLONS, IF COMPLETE FAILURE OCCURRED.
- ELECTRICAL LINES REPLACEMENT: \$230M
- WATER INTRUSION INTO LINES WILL CAUSE IRREVERSIBLE DAMAGE; NYC AREA ELECTRICAL SYSTEM IMPACTED



FUTURE ACTIONS

- Ø LOCATE SOURCE AND SECURE DISCHARGE
- Ø MAINTAIN BOOM CONTAINMENT THRU TIDAL SHIFTS
- Ø ON-GOING DIVE OPS TO SURVEY DEBRIS
- Ø ON-GOING CRANE OPS TO REMOVE DEBRIS

ACTIONS

- Ø EST OF OVERALL EXPENDITURES: \$ 20,785,108
(CON EDISON: \$ 9,352,167; PSE&G: \$ 1,287,023; NADC: \$ 8,328,055; NJDEP \$ 14,768; USCG: \$ 1,803,095)
- Ø OSLTF : \$2,000,000
- Ø UNIFIED CMD: CG, NJ DEP, PSE&G, CON EDISON, & NADC
- Ø CG SUPPORT: CG-LCL: DOCL (2), AST: RS (1), LOFR (1) FOSCR (1), IC (1)
- Ø CONTRACTORS: GALLAGHER MARINE SYSTEMS (4)
- Ø DAY OF RESPONSE: 187 (07APR17)
- Ø ACTIVE DISCHARGE CONTINUES: INITIAL OIL RECOVERY: 209.33 GAL (03-14OCT16), EST OIL SHEEN QUANTIFICATION: 235 GAL (AS OF 04APR17)

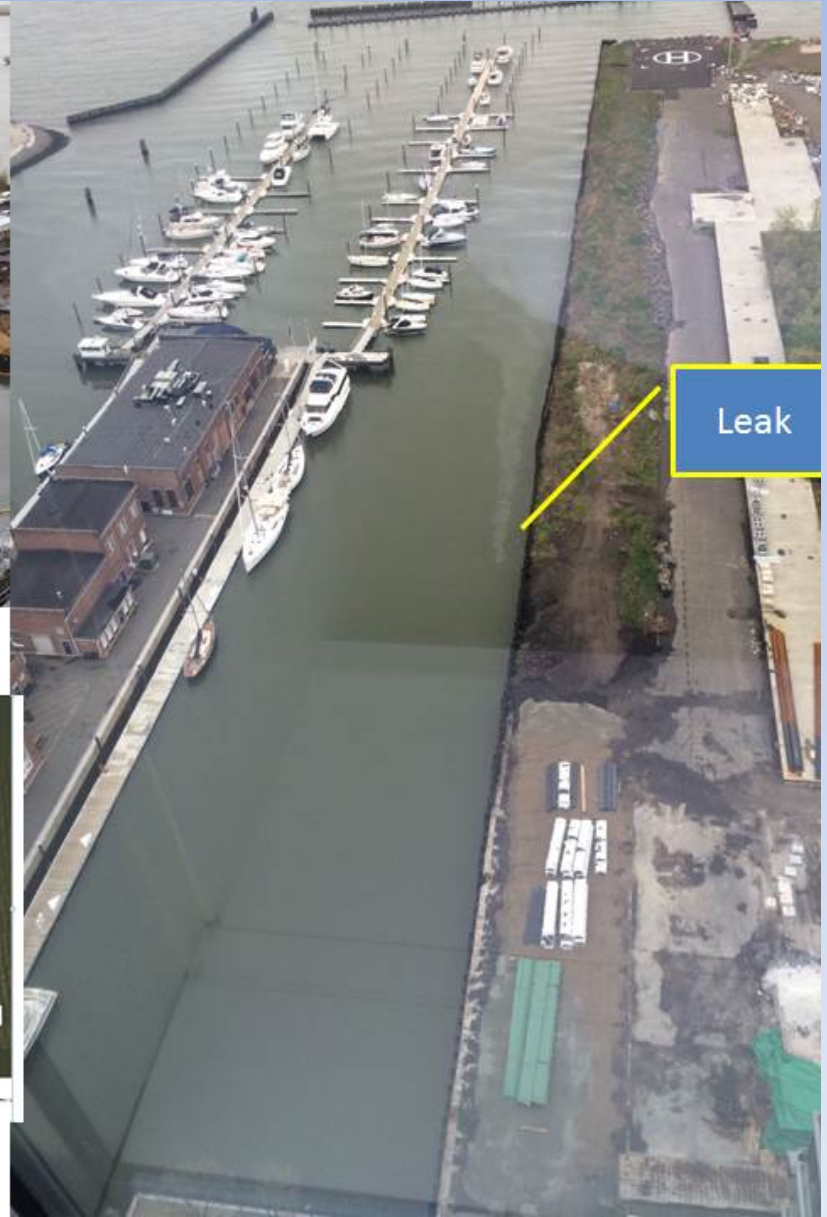




Timeline Photos

B3402/C3403 MARINA SPILL - DIELECTRIC OIL DISCHARGE

FPN: B17001





Other cases



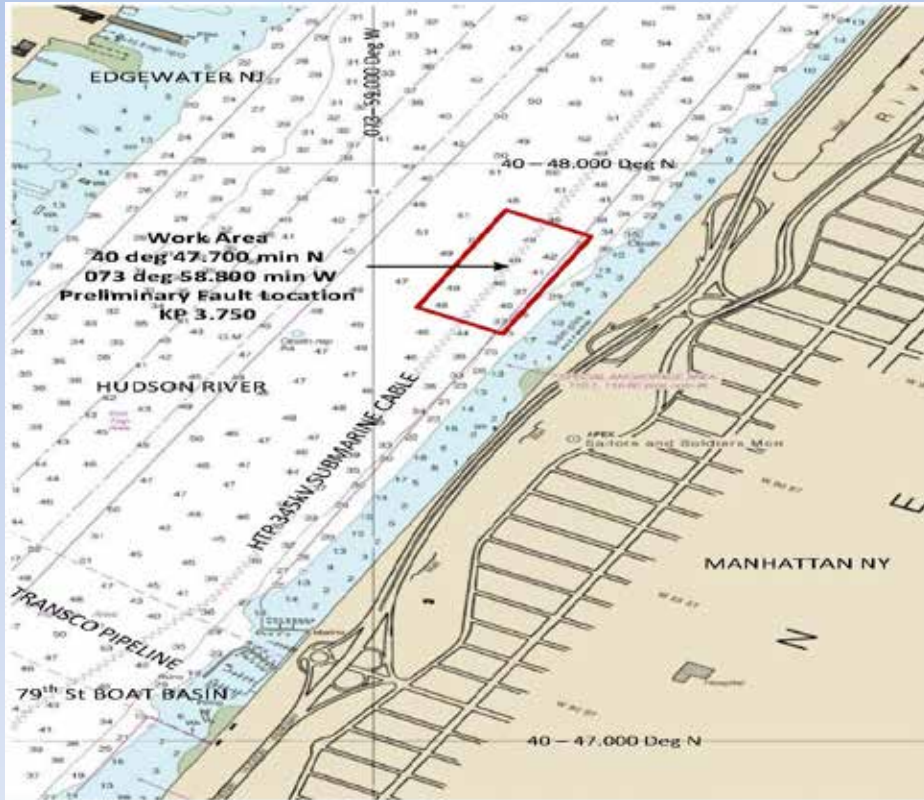
HUDSON TRANSMISSION Y56 CABLE DIELECTRIC OIL DISCHARGE FPN: B17005

INITIAL NOTIFICATION

24NOV16: HUDSON TRANSMISSION CONFIRMED Y56 CABLE TRIPPED DUE TO PROTECTION FAILURE AND ALSO CONFIRMED LOSS OF DIELECTRIC FLUID PRESSURE. CABLE PROVIDES POWER TO NYC CUSTOMERS OF THE NY POWER AUTHORITY.

ACTIONS

- Ø OSLTF OPENED FOR **\$20,000**
- Ø UNIFIED COMMAND: USCG, NYSDEC, NJ DEP, HUDSON TRANSMISSION PARTNERS(RP)
- Ø RP OSRO: **KEN'S MARINE**
- Ø TOTAL DISCHARGE **7,084 GALLONS** OF DIELECTRIC FLUID
- Ø CUT & CAP COMPLETE; **DISCHARGE SECURED**
- Ø **90 DAY RESPONSE**





ABANDONED CONTAINER – NEWARK BAY CPN: C17013

- At 1005 on 06DEC16, an abandoned metal container was discovered in Newark Bay
- Potential release or discharge: 150 gallons of an unknown substance
- Sector NY FOSCR opened CERCLA fund for \$10,000 and removed the container (empty)



ABANDONED VESSEL *MINNOW* – OIL DISCHARGE FPN: B17007

- On 05JAN17, Sector NY responded to an abandoned vessel discharging fuel into Great Kills Harbor, Staten Island, NY
- Sector NY FOSCR opened the OSLTF for \$5,000 and removed the source of pollution





ABANDONED VESSEL OIL DISCHARGE – MANHASSET BAY FPN: B17013

- On 11FEB17, a partially submerged vessel was reported in Manhasset Bay, Sands Point, NY
- Sector NY FOSCR opened the OSLTF for \$10,000 and removed pollution found onboard





Questions?