



Department of
Environmental
Conservation

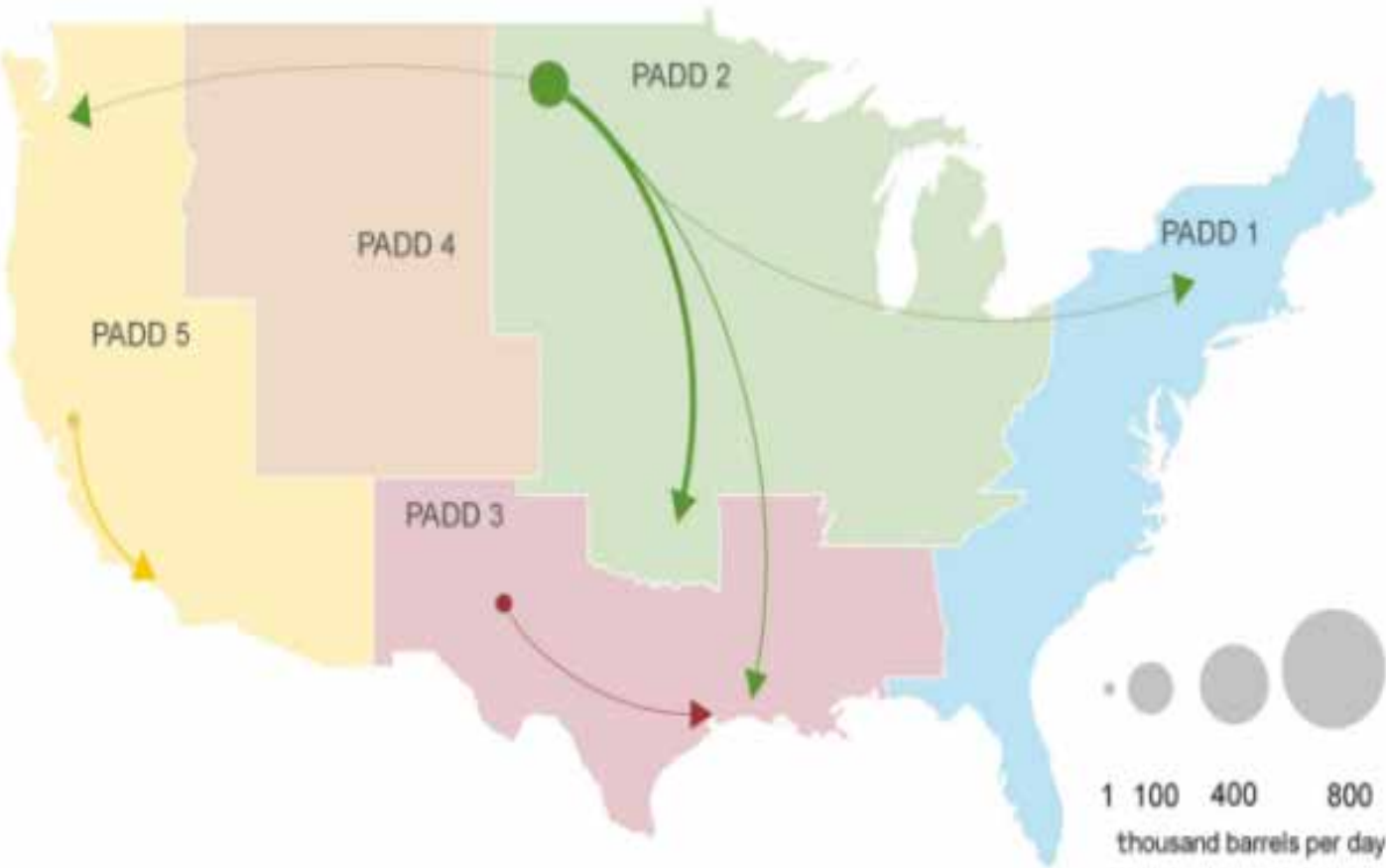
New York State Inland GRP Update Lake Champlain Region

**Joint Regional Response Team 1 & 2
Burlington, Vermont - Spring 2017**

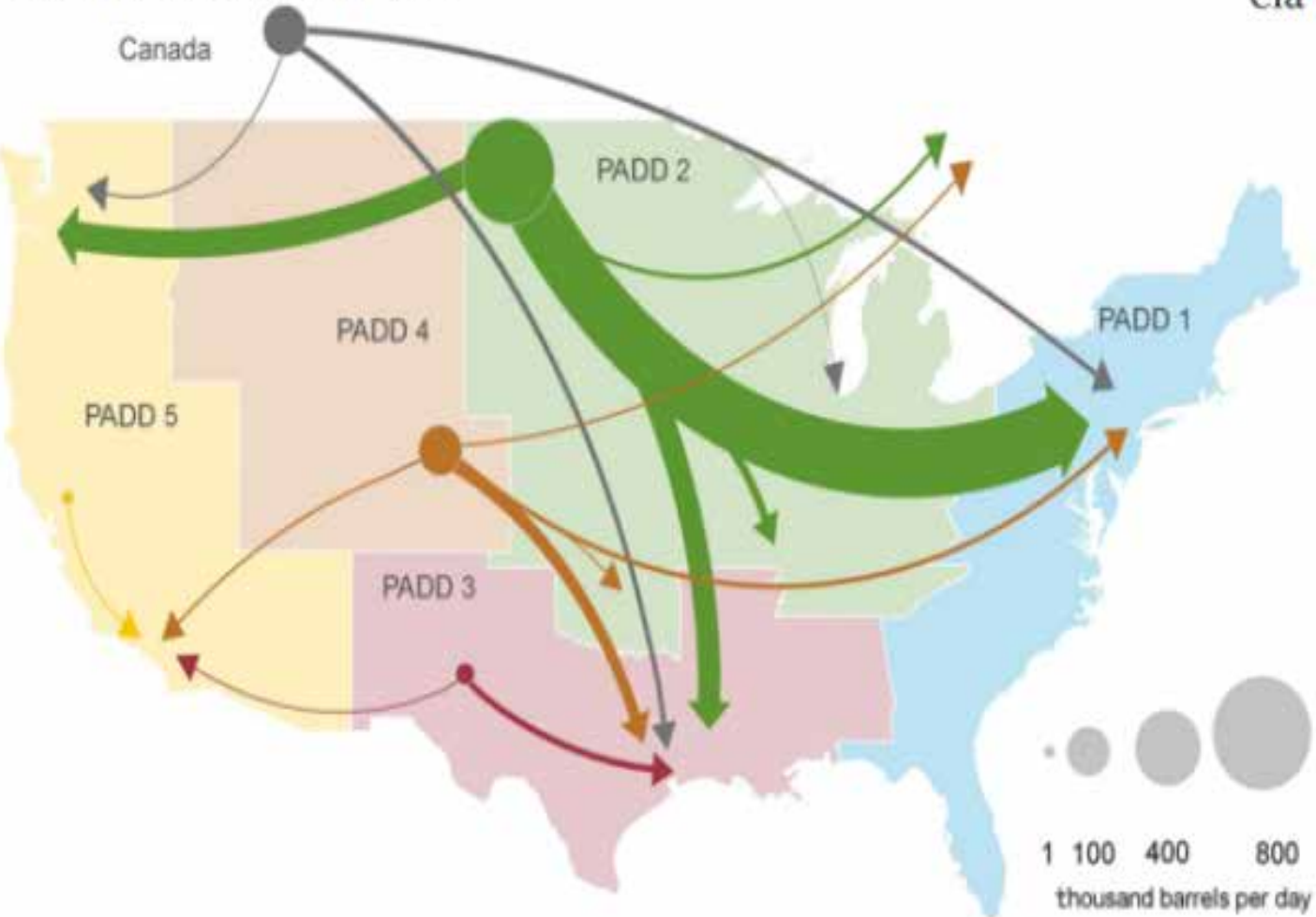
Crude-by-rail movements (2010)



Canada



Crude-by-rail movements (2014)






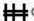

New York became a key player overnight

Pickens County Alabama Nov 8, 2013




In response to this large increase in crude-by-rail traffic, the Governor of New York issued Executive Order 125 directing state agencies to strengthen the state's preparedness for incidents involving crude oil transportation. New York State's (NYS) Department of Environmental Conservation (DEC), in collaboration with the Department of Homeland Security & Emergency Services and Department of Health, are leading a multi-stakeholder effort to develop Inland GRPs for the 21 NYS counties currently impacted by crude-by-rail transportation.

LEGEND

-  POTENTIAL PERMANENT BOOMING
-  CSX / CP RAILROAD
-  COUNTY BOUNDARY



1 INCH = 38 MILES




Department of Environmental Conservation



Date Saved: 3/13/2017 2:57:40 PM

GRP Development

A tiered approach was used to develop NYS GRPs:

Tier 1: County steering committees were established consisting primarily of local first response agencies, as well as their state and federal partners. Utilizing Sensitive Resource Maps developed by NYSDEC, coupled with local steering committee input, location-specific response plans were identified.

GRP Development

A tiered approach was used to develop NYS GRPs:

Tier 2: Location-specific response plans were drafted, reviewed by the NYSDEC and steering committees and set as final working “evergreen” documents, which are open for update/refinement at any time in the future.

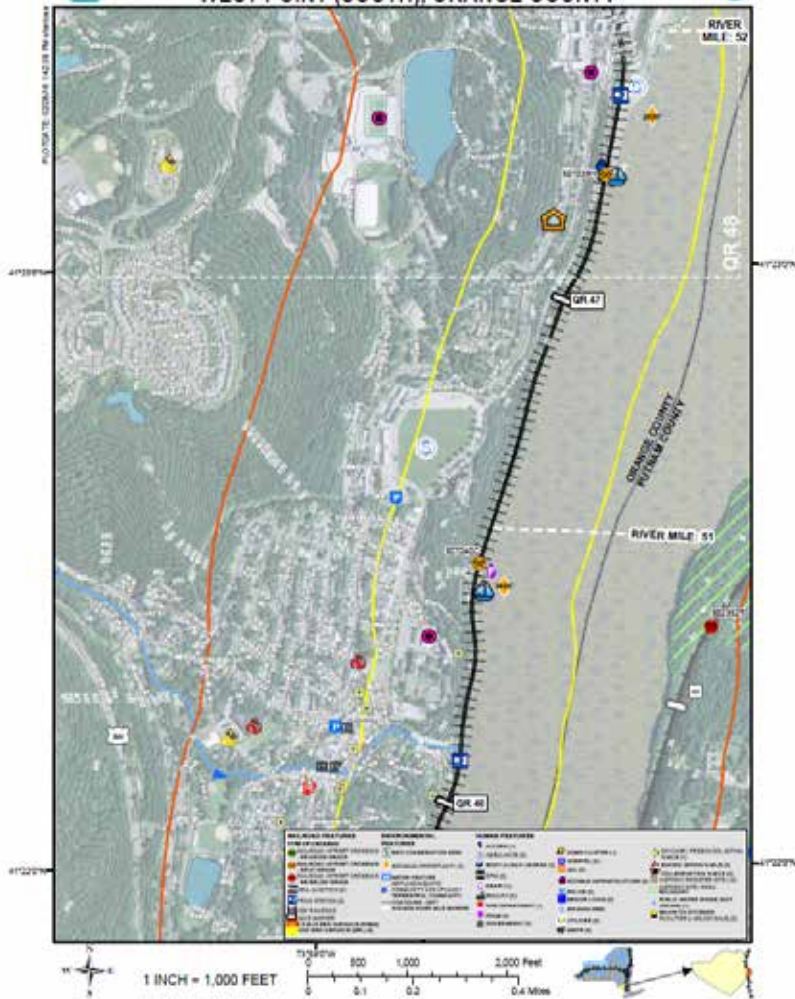
Priorities for Protection

- Sensitive Human Populations
- Environmentally Sensitive Areas
- Critical Infrastructure

Oil Spill Response Equipment



RAILROAD MILE MARK QR 46 - WEST POINT (SOUTH), ORANGE COUNTY



Example GRP MAP

There are **over 300**
GRPs for the
850 miles of
NYS railroad track

Planning is Everything







Saranac

Milton

Lake Champlain

Burlington Burlington

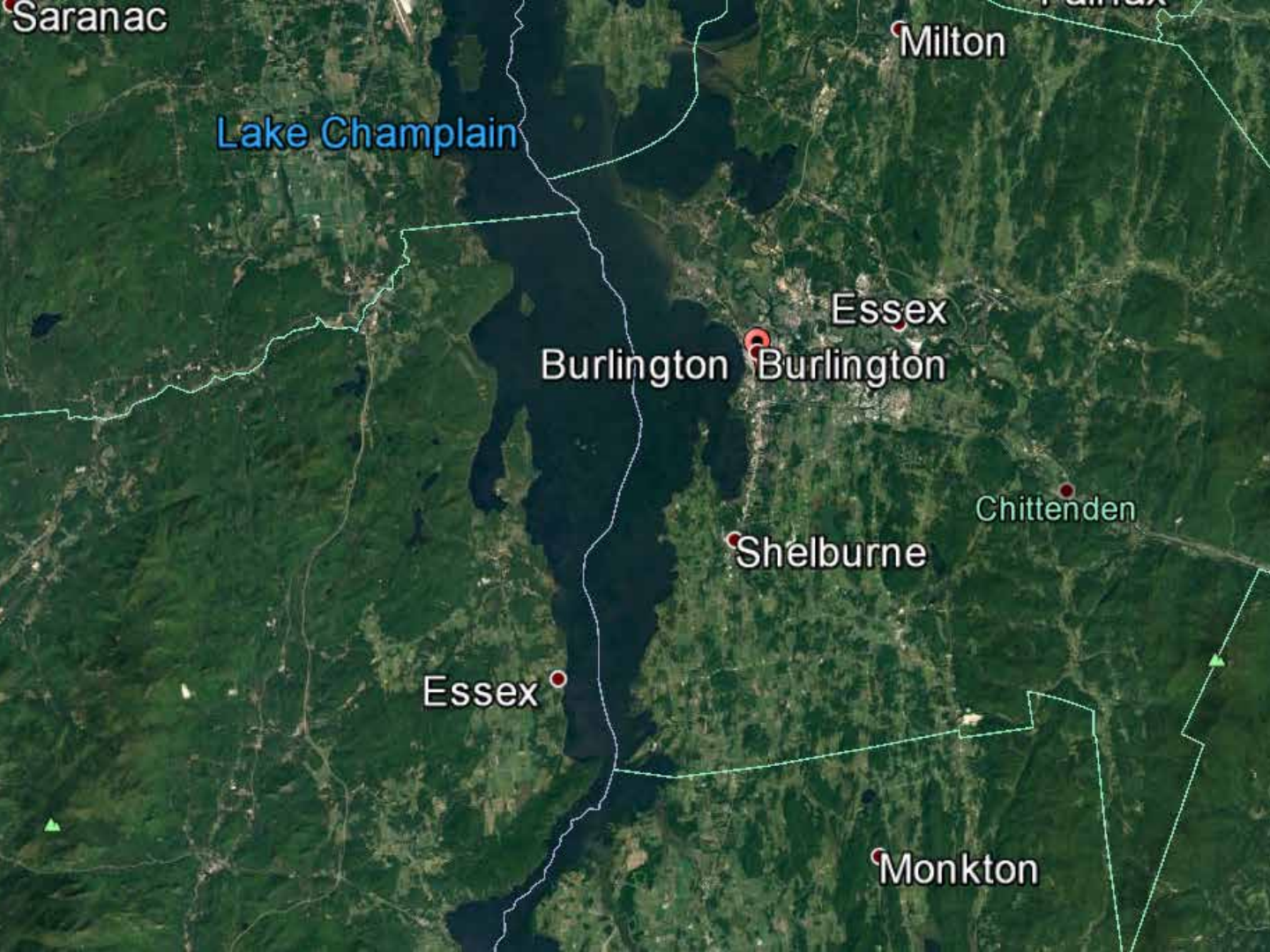
Essex

Shelburne

Chittenden

Essex

Monkton



Saranac

Milton

One Suggested Approach



Burlington

Burlington

Essex

NY

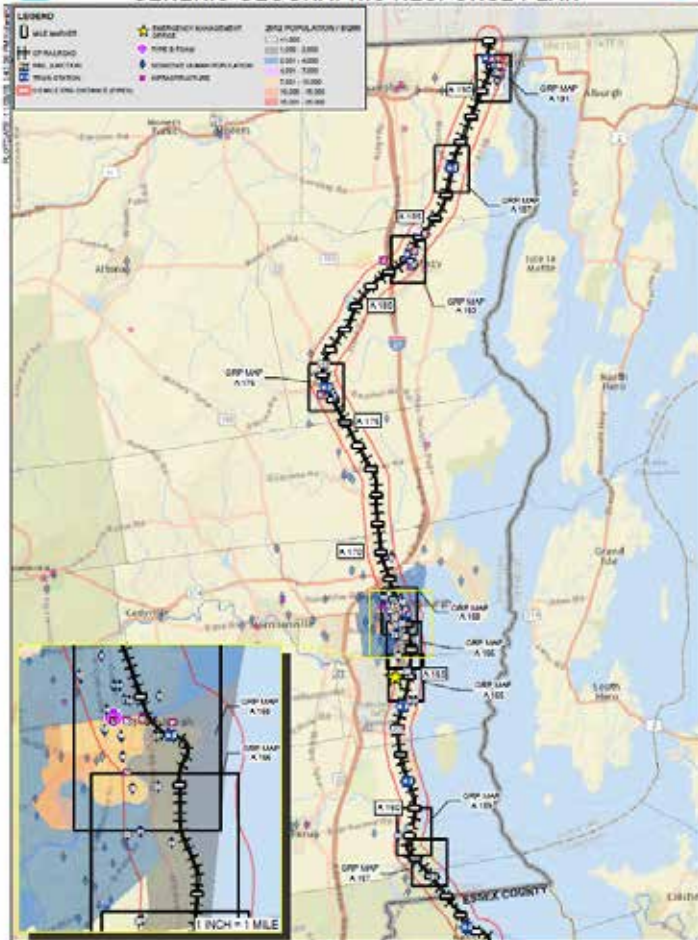
VT

Shelburne

Chittenden

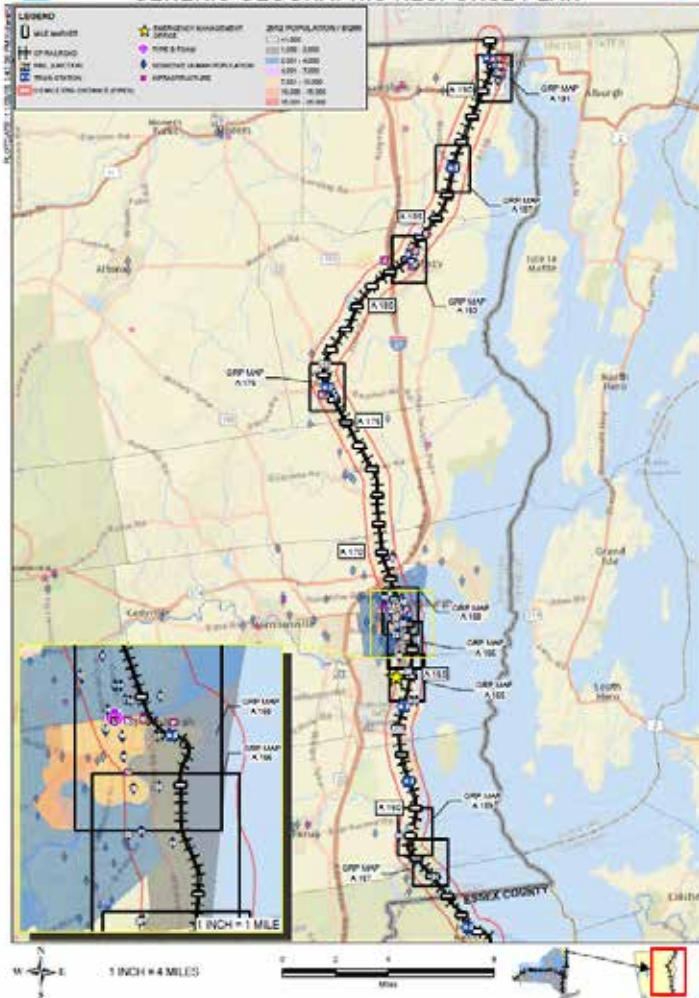
Essex

Monkton



A More Focused Approach

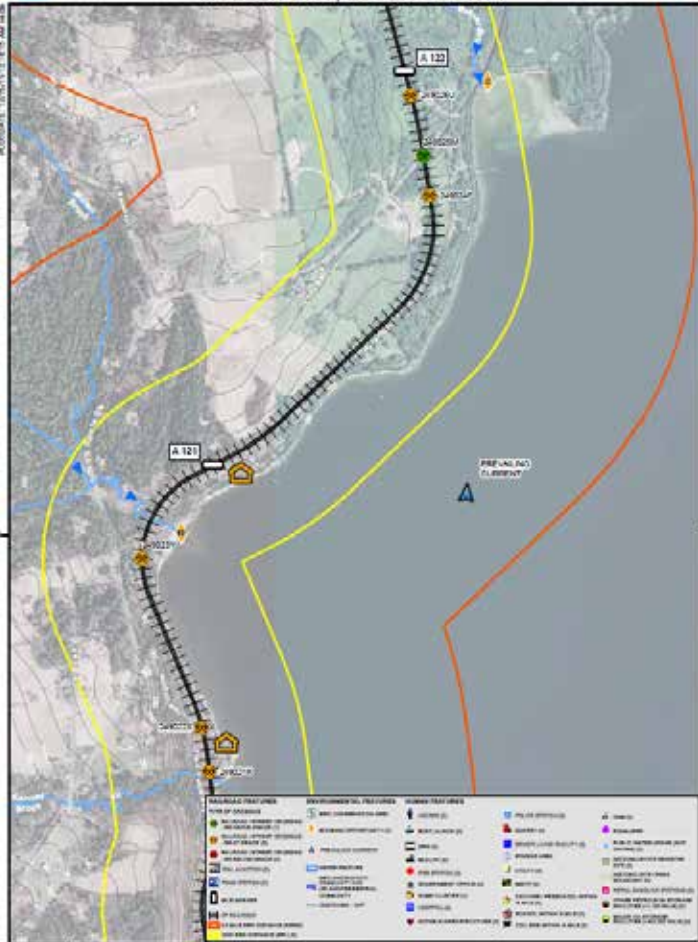




Clinton County Generic GRP

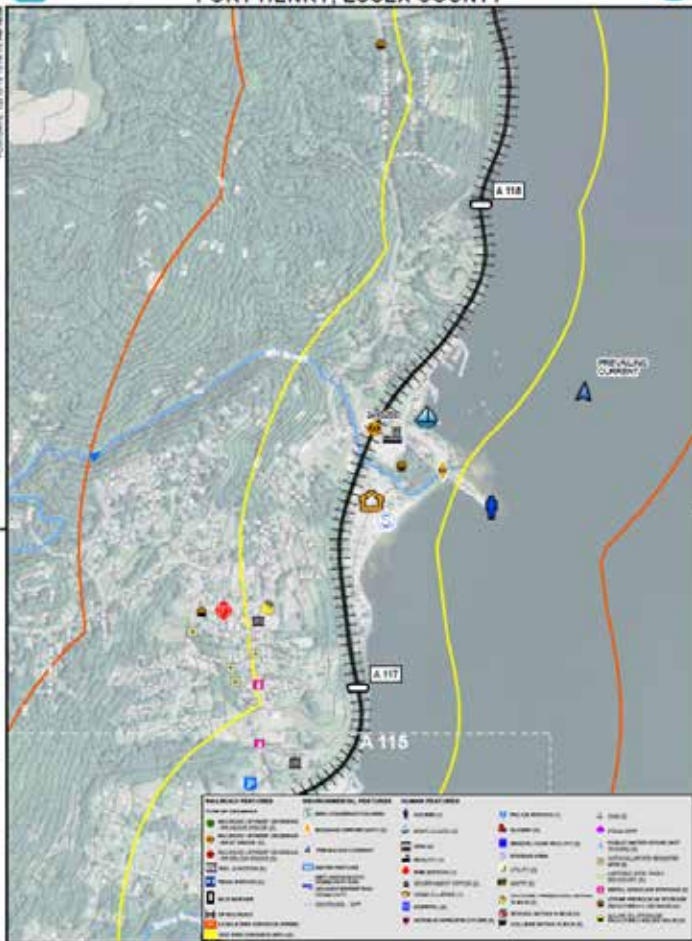
Site-specific GRP (many/county)

The Site-specific GRPs are higher resolution response plans. In addition to sensitive environmental resources and booming strategies, these plans identify the locations of sensitive human receptors (e.g., schools, daycare centers, assisted living centers, etc.), critical infrastructure, and fire suppression assets.



Mullen Bay

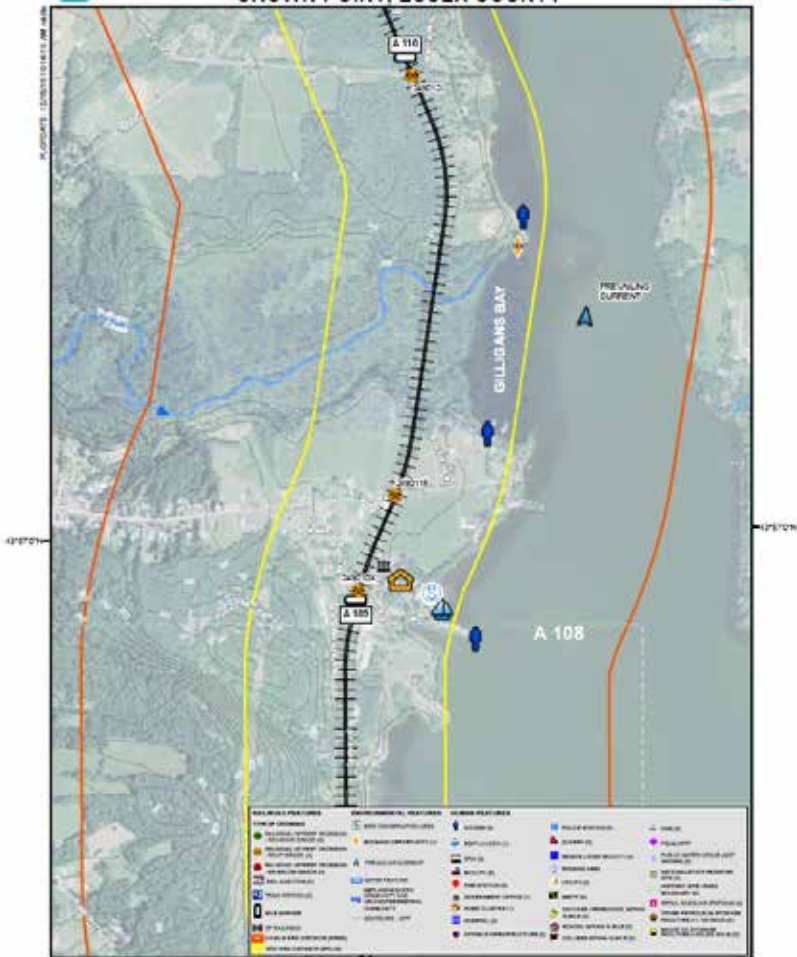
RAILROAD MILE MARK A 116 -
PORT HENRY, ESSEX COUNTY



Port Henry

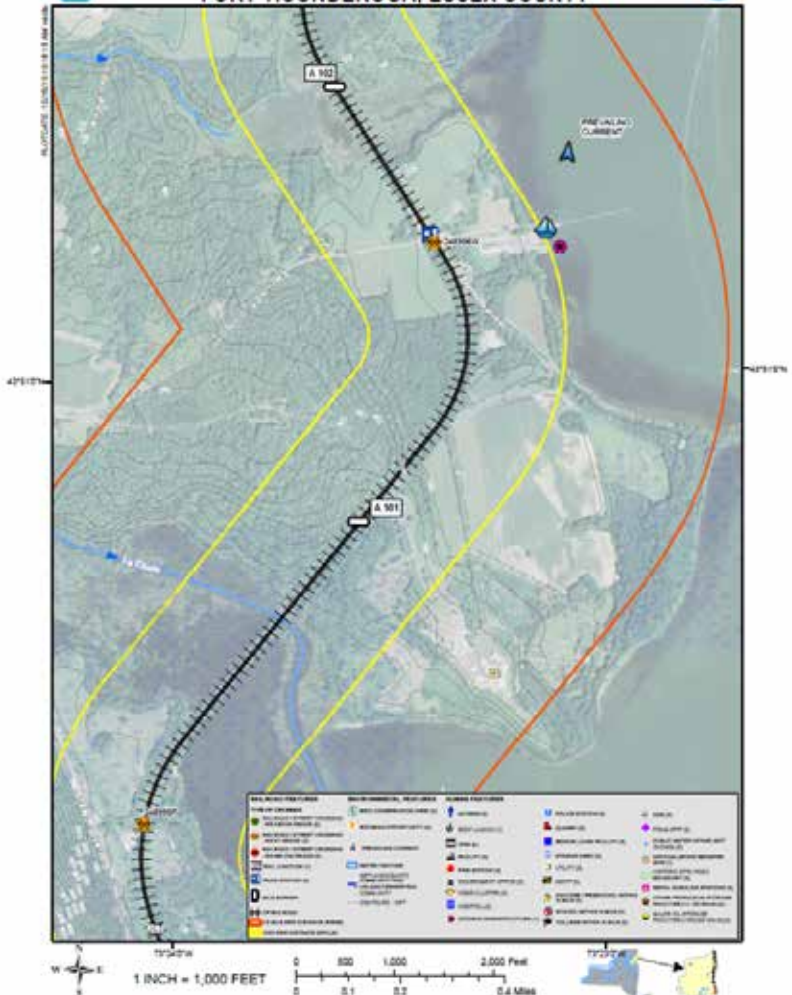


RAILROAD MILE MARK A 110 - CROWN POINT, ESSEX COUNTY



Crown Point

RAILROAD MILE MARK A 101 - FORT TICONDEROGA, ESSEX COUNTY



Fort Ticonderoga

The backside of the GRP provides a general checklist of response considerations, a list of agency and industry notification numbers, the address for fire suppression resources, and phone numbers for each sensitive receptor facility within 0.5 miles of the tracks.

Railroad Mile QR 98 – Saugerties, Ulster Co.

Location: Town of Saugerties, Chautauque County
 Coverage Area: Town of Saugerties
 Railroad Mile Markers: CSX QR 98.75 to CSX QR 98.00

CONTACT ALL NUMBERS BELOW	
Local Fire & Police	911
Northern Wisconsin Center (NPA/USCG)	(800) 424-8802
DEC Spill Response	(800) 457-7362
CSX Railroad	(800) 292-0144
Ulster County Emergency Management	(845) 301-7000
State Watch Center	(848) 283-3200
Saugerties Town Police	(845) 248-9800

- REGULATIONS:**
- IDENTIFY PRODUCTS
 - NOTIFY POTENTIAL RECEIVERS AND RESPONSE CONTACTS
 - REGISTER WITH WHICH CENTER TO NOTIFY FROM ASSETS
 - ENROUTE AS MILE
 - IF PRODUCT IS LIQUID ON FIRE AND NO LIFE HAZARD TO HOME, EVACUATE EXPLOSION RISK IF FEARS
 - IF 50 ON RAILROAD CAR, EVACUATE, DOES FIRE THREATEN POPULATION OR OTHER INFRASTRUCTURE?
 - IF 50, FIGHT FIRE USING TOWN AND VENDOR ADDITIONAL TOWN FROM STATE TRAINING CENTER, ULSTER HIGH VOLUME DRAFT POINTS IF POSSIBLE, IF NOT LIFE HAZARD, APPLY COOLING MEDIA TO ADJACENT CARROLLA UNMANNED MONITORS.
 - CONSIDER HAZOP CONTROL MEASURES TO MINIMIZE HAZARD AND ENVIRONMENTAL IMPACTS

- SPILLS AND**
- IDENTIFY PRODUCTS
 - WFOREQ - PUMP/WALK/DRIFT/NO FIVE FORM SUPPLEMENT
 - WATER REMEDIATION POTENTIAL LOCATION SOURCE
 - NOTIFY RESPONSE CONTACTS - LEAD/PEP DRAIN
 - TRIAL SPILLS/LIFE HAZARD IN PLACE AS RECEIVABLE
 - NOTIFY RESPONSE CONTACTS, WASHINGTON CENTER, INSPECT MATERIAL SPILL/SPRING ASSETS
 - PREVENT FLOW FROM PREVENT FLOW INTO SPILL/RESPONSE WITH BOG/LEAK/DRY/FILL
 - IF SPILL REACHES RIVE DRAIN, NOTIFY DOWNSTREAM RECEIVERS AND DEPLOY SOCM WHERE POSSIBLE

- DEVALUING/ACCIDENT (NO**
- CHURNING FILL OR LEAK
 - IDENTIFY PRODUCTS
 - NOTIFY RESPONSE CONTACTS
 - REMOVE POTENTIAL SENTINEL
 - SENSE
 - SPILL/RY: BECAUSE PERMISSIBLE

GEOGRAPHIC ACCESS
 Primary access route: 1a to 147 Ave 20 to Ulster Ave, head east on Ulster Ave into the town of Saugerties.
 Alternative access route: 1a to US-202 to US-9W N, follow US-9W N into Saugerties.

RAILROAD ACCESS
 Access is at or near the following crossings: Doyle Ln (843878W) and Ulster Ave (843877N). Additional access may also be possible behind Saugerties Lumber True Value and along Railroad Ave which runs parallel and west of the tracks.

- NOTIFICATION AND EVACUATION**
- DOWNSTREAM CONSIDERATIONS**
- Amtrak Routes 845-246-3401
 - Comfort Inn Joudis 7 1/2 mile 845-246-1365
 - Howard Johnson Inn Saugerties 845-246-9511
 - Country Acres Center Dayles 845-247-8700
 - Pioneer Inn 845-519-514-2600
 - Saugerties Lumber True Value 845-246-4935
 - Saugerties Town Hall 845-246-2800
 - Booth's Plant 845-248-4933
 - Colored Oil Storage 845-248-0475
 - LR Pump/flow Dayles 845-246-7064

- FIRE SUPPRESSION**
- High Volume Class B Foam Trailer: South (20 mile) - 18 East O'Reilly St, Kingston, NY 12401
 - Fire Station: Village of Saugerties Fire Departments 845-246-8700
 - R. A. Snyder Hose Company No. 1
 - Washington Hook & Ladder Company
 - C. A. Lynch Fire Company No. 2
 - Cedar Grove Fire Company 845-246-1730
 - Conestoga Fire District 845-246-5223
 - Melton West Corp Fire House 845-246-3287
 - Mount Marion Fire Company 845-246-1290
 - Leaton Fire District 845-246-1121
 - Water Drawings: Saugerties Village Beach 5 Partition St, Saugerties, NY 12477
 Saugerties-Melton Mill Park 234 Noyes Rd, Saugerties, NY 12477

- DOWNSTREAM CONSIDERATIONS**
- Saugerties Water Department 845-246-8524
 - Saugerties Wastewater Treatment Plant 845-246-7331

- HOP / STAGING**
- Saugerties Junior/High School: 310 Washington Ave East, Saugerties, NY 12477
 - Central Memorial Corp Inc: Pavilion St, Saugerties, NY 12477

- WATER RESPONSE STRATEGIES**
- Beas: Deploy boom at downstream location ahead of oil migration.
 - Bever 33 E Ulster Ave (Rt 212) 1°17' 48" N, 72° 4' 36" W
 - Tannery Brook Ulster Ave (Rt 212) 1°18' 27" N, 72° 4' 32.7" W
 - Tannery Brook Myer Ln 1°18' 27" N, 72° 4' 32.4" W
 - Saugerties Marina 2 Ferry St, Saugerties, NY 12477
 - Saugerties Marina 26 Ferry St, Saugerties, NY 12477

- SITE AND SEASONAL CONSIDERATIONS**
- An electrical substation is located within the geographic area.
 - North Central Hudson Gas & Electric (845-898-9888) if impacted.
 - USGS Station Saugerties Aid to Navigation Tern (ANT) (845-246-2842) is located on the Lower Esopus Creek.
 - Wetlands may be located during warmer months.
 - Notify NYDEC Call Hotline (800-457-7262) for any wildlife impacts.

- TRAINING RESOURCES**
- Saugerties Highway Department 845-246-2400
 - NY Thruway Authority Saugerties 845-246-4521
 - Northwest Sothe Corporation 845-246-7177

Emergency Response Database

Process	Access	Dist 2nd St	Residence	Business/Code	Volume	Spills	Special
1075	1090	1202	1203	1267	1294	1307	1987

Enlarge and print Address Database for field mobile use

Example of back of GRP - Notifications and Actions

NOTIFICATION AND EVACUATION

DOWNWIND CONSIDERATIONS



Ametek Rotron: 845-246-3401



Comfort Inn (outside ½ mile): 845-246-1565



Howard Johnson Inn Saugerties: 845-246-9511



Country Acres Center Daycare: 845-247-8700



Paraco Gas: 845-518-514-2600



Saugerties Lumber True Value: 845-246-4915



Saugerties Town Hall: 845-246-2800



Bottini Fuel: 845-246-4931



Colonial Oil Gasoline: 845-246-0475



Lil Pumpkins Daycare: 845-246-7064

DOWNSTREAM CONSIDERATIONS



Saugerties Water Department: 845-246-8958



Saugerties Wastewater Treatment Plant: 845-246-2331

FIRE SUPPRESSION

F **High Volume Class B Foam Trailer:**
South (20 min) - 19 East O'Reilly St, Kingston, NY 12401

F **Fire Station:**
Village of Saugerties Fire Department: 845-246-9701
R. A. Snyder Hose Company No. 1
Washington Hook & Ladder Company
C. A. Lynch Fire Company No 2
Cedar Grove Fire Company: 845-246-4739
Centerville Fire District: 845-246-5223
Malden West Camp Fire House: 845-246-3287
Mount Marion Fire Company: 845-246-2290
Saxton Fire District: 845-246-1121

F **Water Drafting:**
Saugerties Village Beach: S Partition St, Saugerties, NY 12477
Saugerties Malden Mini Park: 214 Riverside Dr, Saugerties, NY 12477

SITE SPECIFIC STRATEGY A168-A PLATTSBURGH, CLINTON COUNTY



LOCATION	
Water Body Name	SARANAC RIVER
Water Body Type	RIVER
Parking/Staging Location	0000 57 8047 RAMA CHAUVIN BAY BEINGS DR 02
Booming GPS Location	44.619616, -73.488515
Address	36 GREEN ST PLATTSBURGH, NY 12060
Distance From Tract	850 FT. 00
NYSOSC Trailer Contact	EPIC 200 764-055-1790



PROPOSED STRATEGY

Strategy Item	Why is it Critical?	Implementation	Costs/Activities
COLLECTION BOOM - 200'	HARD-ON SPILL RESPONSE EXPLANATION (OS 80) IMPLEMENTATION SUGGESTED	1-4 PERSONS, BOVA, 200' BOOM, ANCHORS, SPACES, STAIRS, MINIMUM, EMERGENCY RESPONSE TRAILER AND TRUCK, MEDIUM TRUCK SIDEWALKER.	PPS/PO SUPPLY RIGS/TALS BIOLOGICAL HAZARDS (TICKS, ETC) RESOURCES SEAT NORTHERN BANK - CHAUVIN BAY RAKE SOUTHERN BANK - PLATTSBURGH SEWAGE TREATMENT PLANT
		COLLECTION BOOM - INSTALL 2 - 500' BOOMS IN A "V" PATTERN WITH APX AT CENTER OF RIVER ANCHOR WHERE BOOMS MEET. ANGLE BOOMS TO DIRECT OIL TO NORTHERN AND SOUTHERN BINS.	

Additional Notes

MS 8

RESOURCES - POTENTIALLY AT RISK	
Resource Name	Response
Recreational and Ecological Assets	MS
WPA/State Resources	MS
Water Users	MS
Special Management (Water Rights) Risk Rating	MS
Schedule of Damages	MS
State Assets and/or Facilities	MS
Cultural Resources	MS
Wildlife	MS
Historic Sites	MS
Special Areas	MS

PHOTO LOCATION 1



PHOTO LOCATION 2



Source: Photos collected from OBG at 1/20/2019

Site Specific Strategy for the mouth of the Saranac River

Planning is Everything



Strategy and Tactics for Incident Commanders Operating at a Crude Oil Rail Emergency



LOCATIONS & DATES:

Ulster County • 4/30/16

Cayuga County • 5/21/16

Erie County • 9/10/16

Chautauqua County • 9/24/16

Herkimer County • 10/1/16

Monroe County • 10/22/16

Madison County • 10/29/16

Wayne County • 11/5/16

Schenectady County • March 4, 2017

Saratoga County • March 11, 2017

Clinton County • March 18, 2017

Washington County • March 25, 2017



Department of
Environmental
Conservation

Emergency Strategies for First Responders



Classroom and hands-on training currently being scheduled around New York State – stay tuned!

Thank You

Kevin Hale

Chief, Emergency Response Coordination
NYSDEC




Kevin.Hale@dec.ny.gov

518-402-9543 (office)

518-281-7347 (cell)

518-457-7362 (24 hour Spill Hotline)

LEGEND

-  POTENTIAL PERMANENT BOOMING
-  CSX / CP RAILROAD
-  COUNTY BOUNDARY



1 INCH = 38 MILES




Department of Environmental Conservation



Date Saved: 3/13/2017 2:57:40 PM