

# LAKE CHAMPLAIN SPILL CONTINGENCY PLANNING BACKGROUND

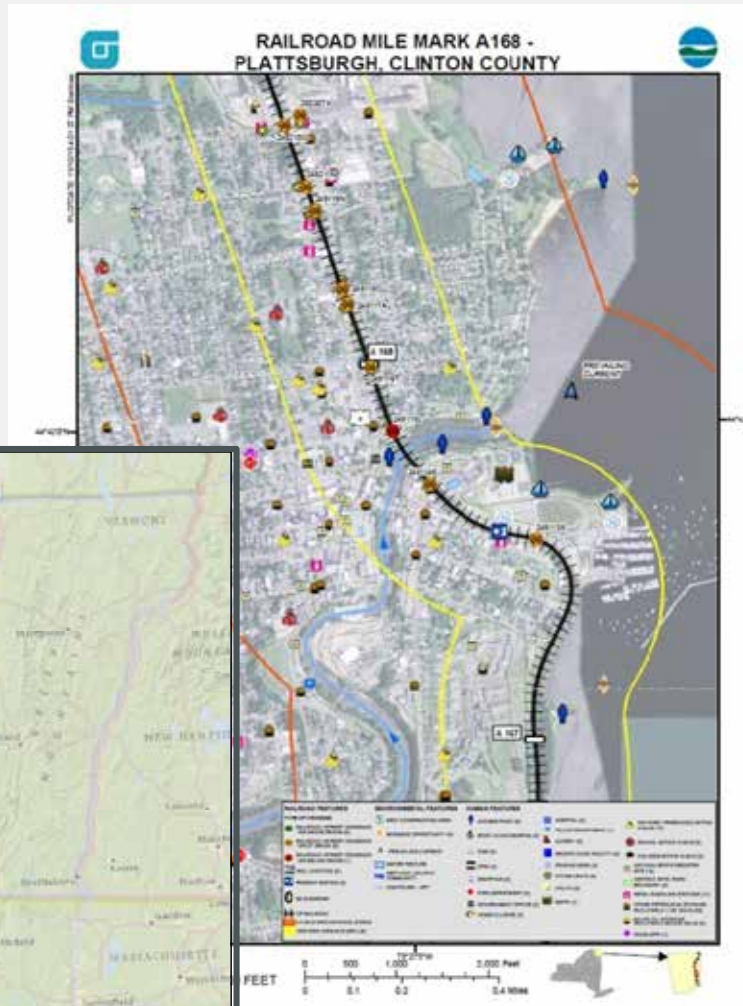
- Joint exercises, oil & hazmat training, spills conference
- Multi-Agency Contingency Plan for Emergency Environmental Events in the Lake Champlain Region (2016)
  - Plan holders: EPA Regions 1&2, USCG D1 & SNNE, NY, VT
  - Roles & Responsibilities
    - NIMS/ UC
    - EPA/CG
  - Substantially completed in 2012-13, signed in 2016





# NYSDEC GRP Development (2014-16)

- 300+ local GRPs
- 500+ site specific booming locations



### Railroad Mile CP A 168 – Plattsburgh, Clinton Co.

Location: City of Plattsburgh, Clinton County  
 Coverage Area: North Plattsburgh  
 Railroad Mile Markers: CP A 168.64 to CP A 169.58

CONTACT ALL NUMBERS BELOW	
Local Fire & Police	911
National Response Center (EPA)	(800) 424-8802
DEC Spill Response	(800) 457-7362
Canadian Pacific Railroad	(800) 710-9132
Clinton Co. Emergency Mgt.	(518) 565-4792
State Watch Center	(518) 293-7200

**FIRE/EXPLOSION:**

- IDENTIFY PRODUCTS
- NOTIFY POTENTIAL RECEPTORS AND RESPONSE CONTACTS. REQUEST STATE WATCH CENTER TO SCHEDULE FOAM ASSETS.
- EVAUATE HAZARD
- IF SCENE SHOWS UNSTABLE FIRE, EVACUATE RESPONDERS AND LET IT BURN.
- IF LOSS POTENTIAL IS INVOLVED, DOES FIRE THREATEN POPULATIONS OR CRITICAL INFRASTRUCTURE?
- IF SO, FIGHT FIRE USING FOAM AND WATER. ADDITIONAL FOAM FROM STATE WATCH CENTER. LITTLE HIGH VOLUME DRAFT BOMBS IF POSSIBLE.
- IF NOT, LET IT BURN. APPLY COOLING WATER TO ADJACENT CARDS VIA UNMANNED AIRCRAFT
- CONSIDER AUMPP CONTROL MEASURES TO MINIMIZE HEALTH AND ENVIRONMENTAL IMPACTS.

**SPILL/LEAK:**

- IDENTIFY PRODUCTS
- VARIES—FLAMMABLE OR TOXIC APRU FOAM SUPPRESSION?
- SAFELY REMOVE POTENTIAL IGNITION SOURCES
- NOTIFY RECEPTOR CONTACTS—1,000 FEET DOWNWIND. EVACUATE OR SHELTER IN PLACE AS NECESSARY
- NOTIFY RESPONSE CONTACTS, RAILROAD AND/OR NYSDEC MOBILIZE SPILL RESPONSE ASSETS
- EVACUATE PLUM BATHING. PREVENT FLOW INTO SEWERS/WATERWAYS WITH BOOMS/DIKE/BBM.
- IF SPILL REACHES WATERWAYS, NOTIFY DOWNSTREAM RECEPTORS AND DEPLOY BOOM WHERE POSSIBLE.

**DERAILMENT/ACCIDENT (NO OBVIOUS FIRE OR LEAK)**

- IDENTIFY PRODUCTS
- NOTIFY POTENTIAL RECEPTORS
- ESTABLISH SECURE PERIMETER

**RESTRICTED ACCESS:**

147 runs the west side of the City. Exit 39 serves Cumberland Head and Plattsburgh City Beach, exit 355 serves the north end of the City, exit 37 serves downtown and central Plattsburgh, exit 36 serves southern Plattsburgh and the airport, and exit 35 serves the south end of Plattsburgh and Peru.

**RAILROAD ACCESS:**

Various secondary roads are located near the railroad, with nine crossings (seven north of the Saranac River and two south of the river).

**NOTIFICATION AND EVALUATION**

**DOWNSTREAM COMMUNICATIONS:**

- Barney Avenue Elementary School: 518-563-2420
- Oak Street Elementary: 518-563-4950
- Seton Academy: 518-825-7386
- StarLine Middle School: 518-563-6000
- North Country Center for Independence: 518-561-9058
- Project Connect: Stephen Quirk - 518-564-8073
- Little Saints Preschool Wendy Briggs - 518-563-5651
- Helping Hands: Kate Calkins - 518-561-6361
- Little Angels: Cassandra Parrish - 518-561-1961
- YMCA of Plattsburgh and Y Wu Care: Elisabeth Stork-Ruff - 518-561-4290
- Susan's Daycare: Susan St. John - 518-510-1499
- Circle of Friends: Monique Worley - 518-561-4471
- Ruth's Place: Ruth Guibo - 518-565-2292
- CVPH Medical Center: 518-563-2000
- 75 Beekman St, Plattsburgh NY 12901

**DOWNSTREAM COMMUNICATIONS:**

- City of Plattsburgh Administrative Contacts:
  - City Highway Dept: 518-561-1120
  - City Engineer: 518-563-7730
  - HWYPT: 518-563-7172

**ICP / STATIONS:**

- Clinton County Sheriff's Office: 25 McCarthy Dr, Plattsburgh NY 12901
- Plattsburgh City Beach: 8 Beach Rd, Plattsburgh NY 12901
- Wilcox Deck: 90 Cumberland Ave, Plattsburgh NY 12901
- Durkee Street Public Parking Lot: 14 Durkee St, Plattsburgh NY 12901
- City Marina and Boat Launch: 4 Dock St, Plattsburgh NY 12901
- Dock Street Boat Launch: 4 Dock St, Plattsburgh NY 12901

**FIRE SUPPRESSION:**

- Local Foam Resources/ High Volume Foam Trailer - Plattsburgh Fire Department - 65 Cornelia Street, Plattsburgh NY 12901

**WATER RESPONSE ISSUES:**

- Booms Boom can be deployed from shoreline access points to protect sensitive shoreline areas in Cumberland Bay, and the Boat Basin marina south of the Saranac mouth. Shoreline access points on the GRP map are near roadways and could be used for recovery as well as boom deployment. Boats would be needed to tend the seaward ends of boom deployed from shore.
- Lake Champlain: Wilcox Deck (079°28' 33.54" 49°42' 25.7')
- Saranac River: Mouth of Lake Champlain (079°28' 49.96" 49°42' 29.81')
- Lake Champlain: Wisconsin St Park (079°28' 39.82" 49°42' 27.88')
- Wilcox Decks: 3 Cumberland Ave, Plattsburgh NY 12901
- City Marina and Boat Launch: 2 Dock St, Plattsburgh NY 12901
- Dock Street Boat Launch: 4 Dock St, Plattsburgh NY 12901
- Peru State Launch: 3928 Rt 9, Plattsburgh NY 12901
- Port Kent Boat Launch: 1 NY-373, Port Kent, NY 12935
- Port Douglas State Launch: 48 Schuyler Rd, Keeseville NY 12944

**BOOMING RESOURCES:**

- Department of Public Works: 518-563-1120 or 518-563-6041

**SPILL AND SEASONAL CONSIDERATIONS:**

Cells that migrate into the river and/or lake should be controlled and collected using booms and skimmers in open water. Primary and secondary water intakes should be protected. Contact City Engineer for intake locations. Notify NYSDEC Spill Hotline for any wildlife impacts.

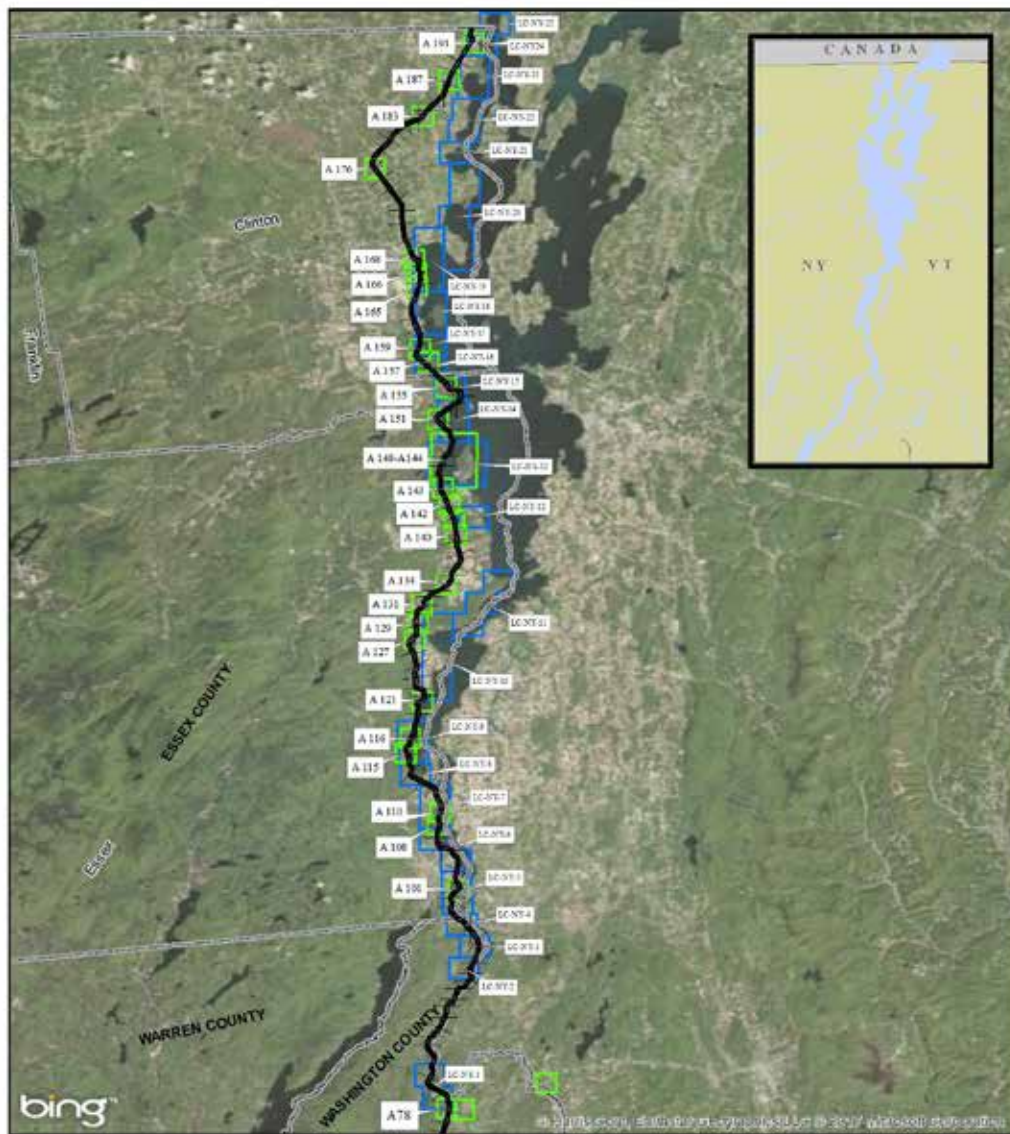
QR Code: 1075, 1090, 1170, 1202, 1203, 1267, 1294, 1307









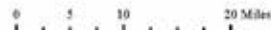


# US EPA Geographic Response Plan Index Map



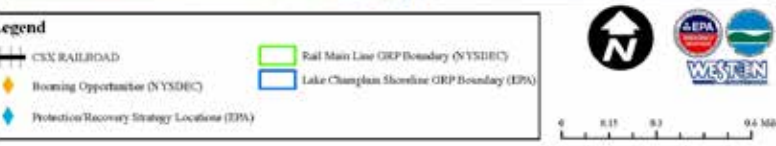
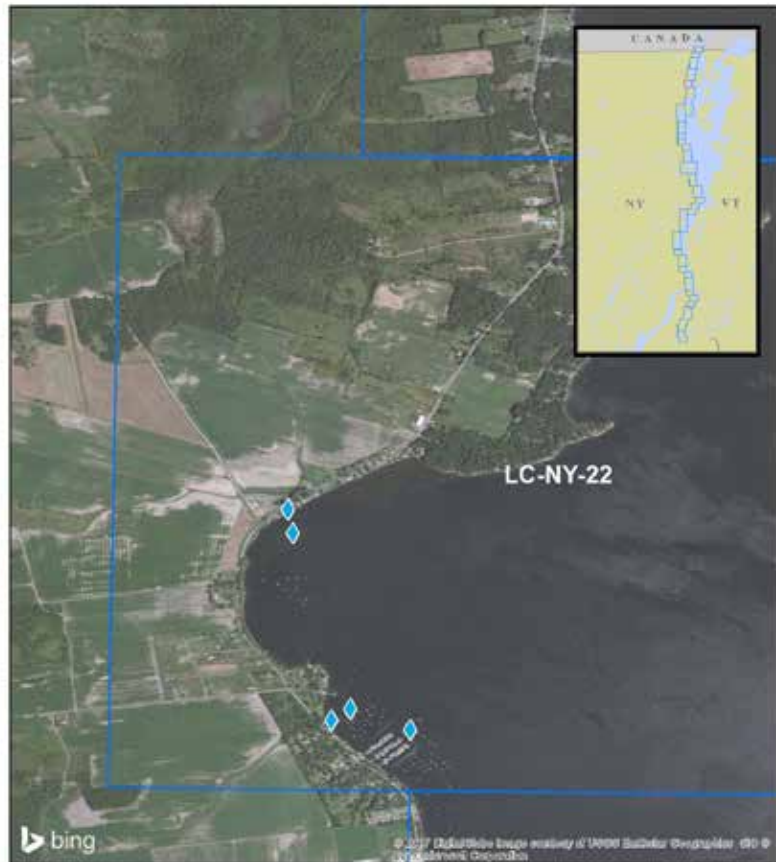
## Legend

-  CSX RAILROAD
-  Lake Champlain Shoreline GRP Boundary (EPA)
-  County Limits
-  Rail Main Line GRP Boundary (NYSDEC)



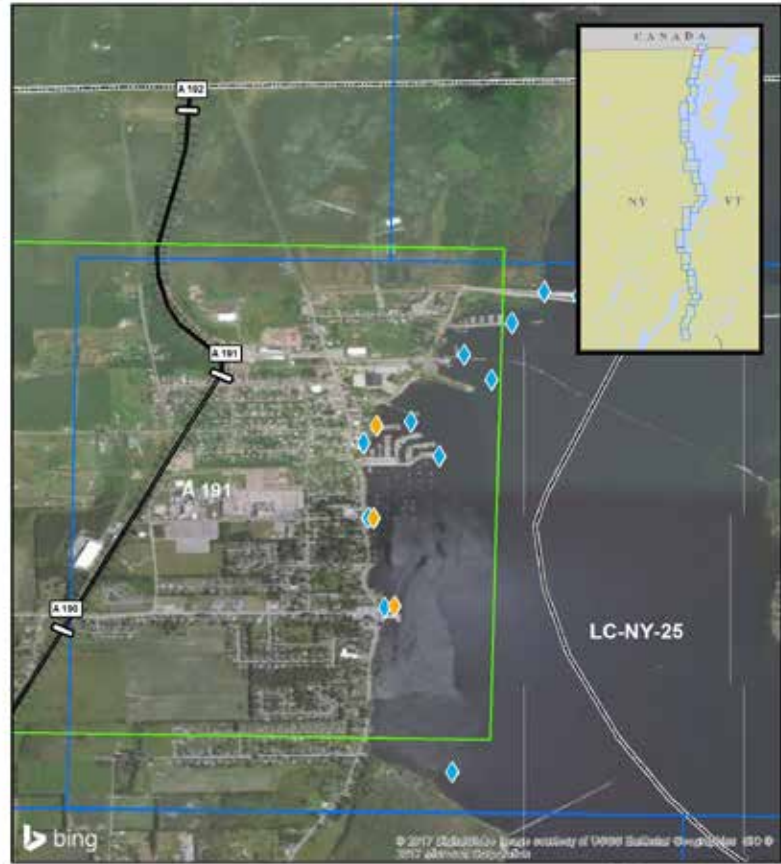


### Geographic Response Plan (Lake Champlain LC-NY-22)

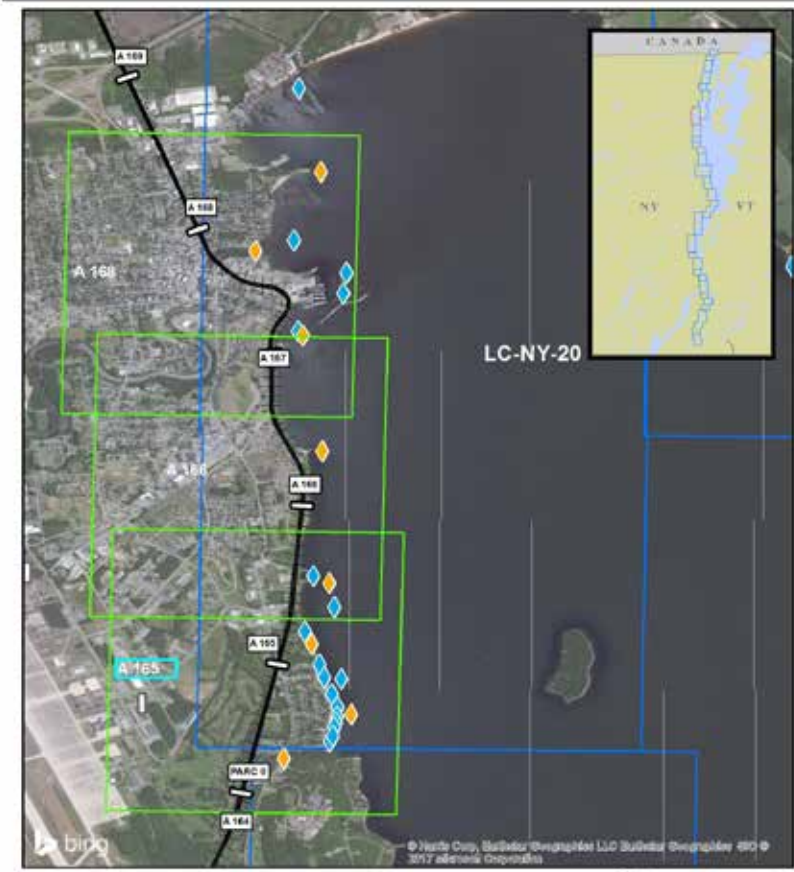


- GRP Coverages:
- LC Shoreline GRP – blue outlines
  - Rail Main Line GRPs – green outlines

### Rouses Point Geographic Response Plan (Lake Champlain LC-NY-25)



### Plattsburgh Geographic Response Plan (Lake Champlain LC-NY-20)





# Shoreline Types



- Rocky Shore
- Vegetated Wetlands
- Developed – Commercial, Residential,
- Parks, Recreational, Historic



## Lake Champlain Shorelines



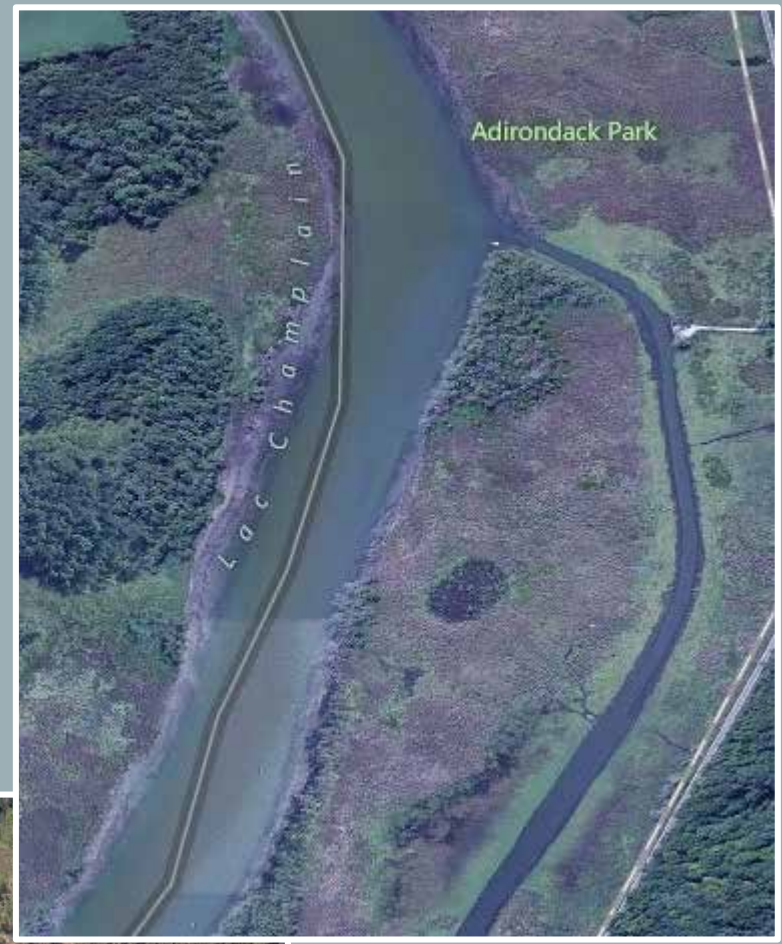
- Rocky Shoreline
- Mud flats
- Wooded shoreline





## Lake Champlain Shorelines

- Wetlands
- Marshes
- River mouths







- Shoreline Sensitivity Summaries
  - Description of Shoreline feature
  - Summary of sensitivity – fish & wildlife habitat, permanent/seasonal, nesting/spawning, recreational, cultural, and other sensitivity concerns
- Considerations for Selection of Response Techniques
  - Area Committee consensus on appropriateness of various removal techniques
    - Preferred
    - Acceptable
    - Conditional (may be acceptable under certain conditions)
    - Unacceptable
  - Deference to resource managers on sensitivity and spill response on feasibility
- Site Specific Strategies
  - Booming Configurations, anchor points, boat ramps, staging areas, access, equipment & personnel needed, etc



## What's Next?

- Reconvene with NY resource managers (DEC-DFWMR)
  - Lines to points
  - Alignment of quad boundaries to shoreline types
- Convene to develop consensus on response strategies (25 GRP quads)
- Development of Site-Specific Strategies (70 locations, NY side)
- Engage with VT (southern portion of lake)
  - Southernmost 7 GRPs cover both NY & VT sides
  - Whitehall to Ticonderoga

