

ATSDR

Emergency Response



Bob Helverson

**Environmental Health Scientist – Region 3 Representative
Agency for Toxic Substances and Disease Registry**



ATSDR
AGENCY FOR TOXIC SUBSTANCES
AND DISEASE REGISTRY

Overview

- ❖ Who is ATSDR?
- ❖ ATSDR Emergency Response and Services
- ❖ Questions



What is ATSDR?

Agency for Toxic Substances and Disease Registry



Protect people from threats found in the air we breathe, the water we drink, and the world that surrounds us by:

- ❖ Monitoring health and environmental factors
- ❖ Conducting research
- ❖ Developing guidance
- ❖ Building partnerships to support healthy decision making



ATSDR
AGENCY FOR TOXIC SUBSTANCES
AND DISEASE REGISTRY

Region 3 Staff

5 region 3 representatives (Philadelphia)

Lora Werner (Regional Director)

Karl Markiewicz (Toxicologist)

Ana Pomales (Environmental Health Scientist)

Christine Lloyd (Toxicologist)

Bob Helverson (Environmental Health Scientist)

Contact info online:

<http://www.atsdr.cdc.gov/dro/r3.html>

ATSDR/CDC EOC: (770) 488-7100



Region 3 Cooperative Agreement Partners

Pennsylvania Department of Health (PADOH)

Farhad Ahmed – Principal Investigator & Health Assessment Section Chief

Sasi Arunachalam – Environmental Health Scientist

Virginia Department of Health (VDH)

Dwight Flammia – Public Health Toxicologist

Ayat Abdelbaki – Health Educator

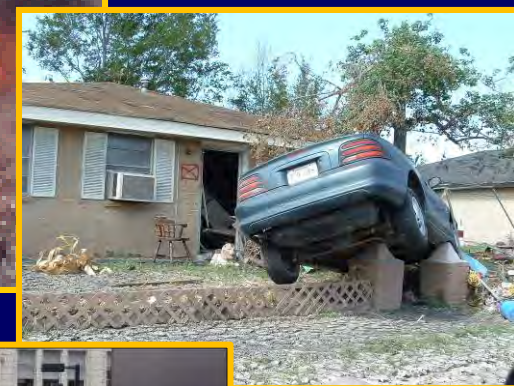


Partners



Emergency Response Events

- ❖ Hazardous material spills and releases
- ❖ Natural disasters
- ❖ Chemical fires
- ❖ Any other environmental disaster that may impact public health

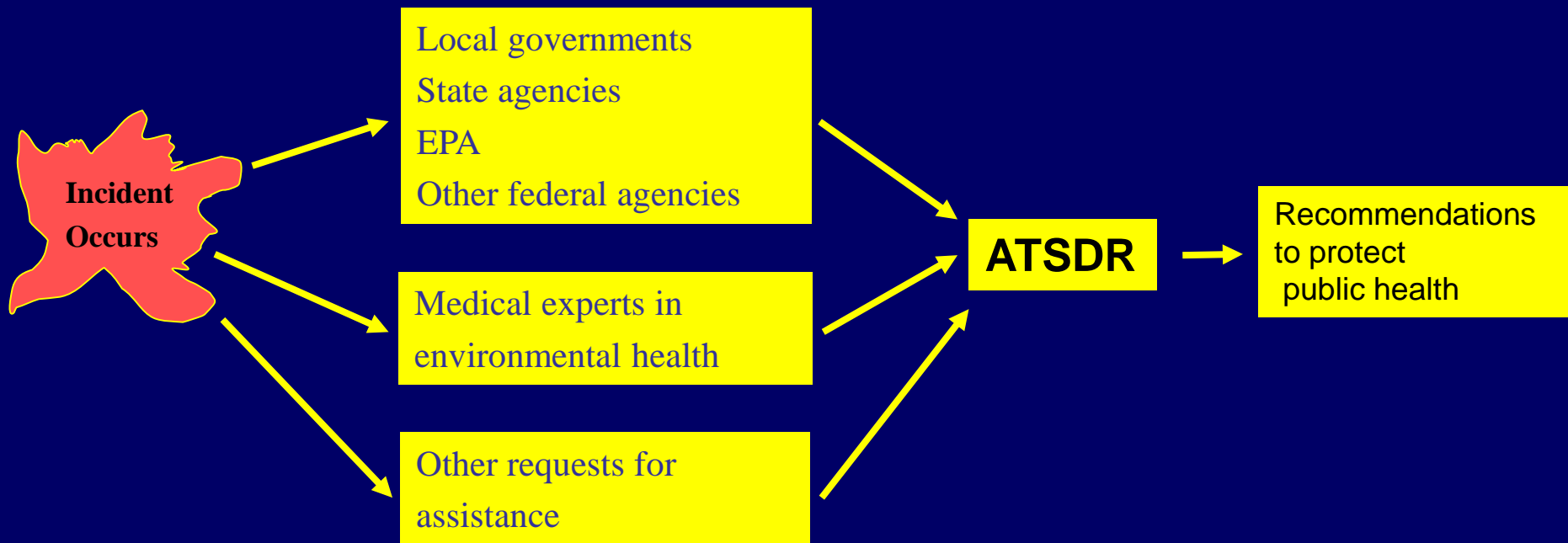


ATSDR's Role in Response

- ❖ Provide Information
- ❖ Coordinate with public health agencies
- ❖ Review environmental data
- ❖ Make recommendations to protect public health
- ❖ Answer environmental health questions



How ATSDR gets involved in a site



ATSDR

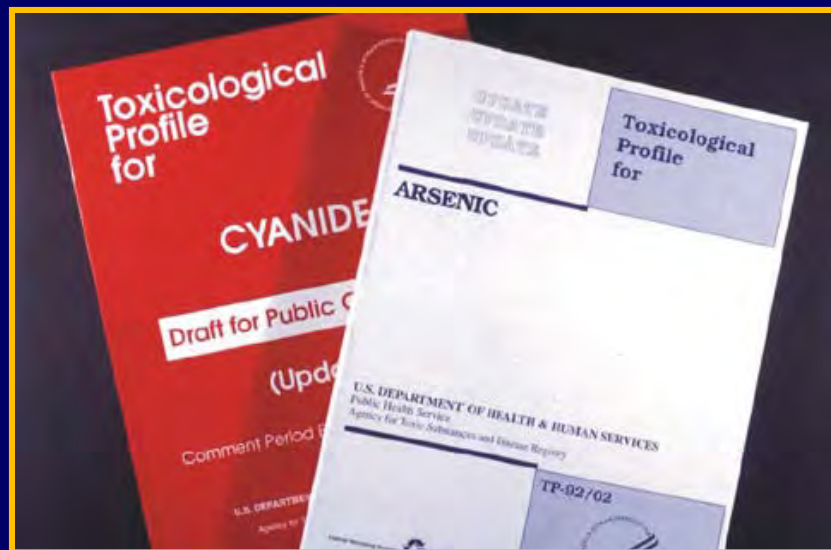
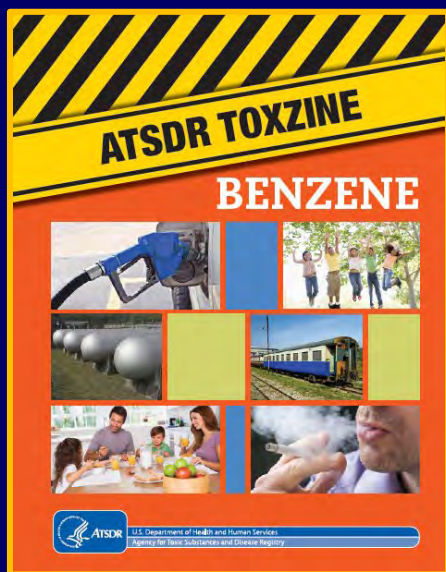
Emergency Response Assistance

- ❖ 24–Hour Service
 - ❖ 1 (770) 488-7100
 - ❖ Ask for the “ATSDR Duty Officer”
- ❖ Response
 - ❖ Technical support
 - ❖ On-site deployment



ATSDR

Emergency Response Resources



<http://www.atsdr.cdc.gov/toxprofiles/index.asp>
<http://www.atsdr.cdc.gov/sites/toxzine/index.html>
<http://www.atsdr.cdc.gov/emergencyresponse.html>



Assessment of Chemical Exposures (ACE) Program

- ❖ Provides rapid services, including Epi-Aid investigations, following an event.
 - ❖ Consent forms
 - ❖ Medical chart abstraction form
 - ❖ Interviewer training manual
 - ❖ Epi Info™7 databases to enter and analyze the data
 - ❖ Surveys



Epidemiological Aid (EPI-AID) Resource

- ❖ Way to provide epidemiologic assistance to state and local health agencies
- ❖ Allows rapid response to public health problems





ATSDR

Emergency Response in Action



Emergency Response in Action

Elk River – Freedom Industries

- ❖ 4-Methylcyclohexanemethanol (MCHM)
 - ❖ Used in coal processing
 - ❖ Very little toxicological or exposure data was available
- ❖ Day 1: Provide short-term screening level (1 ppm)
- ❖ Onsite liaison between ATSDR HQ, CDC EOC, HHS SOC, and state/local agencies
- ❖ Mission Assigned by FEMA
- ❖ Provided continuous support to WVBPH/DHHR
- ❖ Conducted ACE and CASPER with WVBPH/DHHR



Emergency Response in Action

US Virgin Islands



❖ U.S. Environmental Protection Agency

- ❖ Family of 4 transported to hospital with progressive neurologic symptoms
- ❖ Suspected acute methyl bromide poisoning
- ❖ Methyl bromide
 - Used to fumigate condominium below the unit where the family stayed.
 - Applied **2 days** before family developed symptoms.
- ❖ EPA requested ATSDR Region 2 assistance
- ❖ Pediatrician contacted ATSDR R3 for assistance – requested exposure information (air concentrations) since children being treated at CHOP

Public Health Assistance in Emergencies

ATSDR provides:

- ❖ Rapid environmental health assessments
- ❖ Recommendations to protect environmental health
- ❖ On-site assistance
- ❖ Health education
- ❖ Liaison support with public health and medical communities
- ❖ CASPER and ACE



ATSDR/CDC Emergency Contact Phone Number

- ❖ Call CDC's EOC at
 - ❖ **1 (770) 488-7100**
 - ❖ Ask to speak with the **ATSDR Duty Officer**
- ❖ For Public Information call CDC info at
 - ❖ **1 (800) 232-4636**



Questions?



Bob Helverson
gfu6@cdc.gov
(215) 814-3139