

November 10th PATERSON ARMORY FIRE





November, Mondo Bongie with EPA (Newark)



November 15th Water Main Break, Hoboken

Turn Around Don't Drown



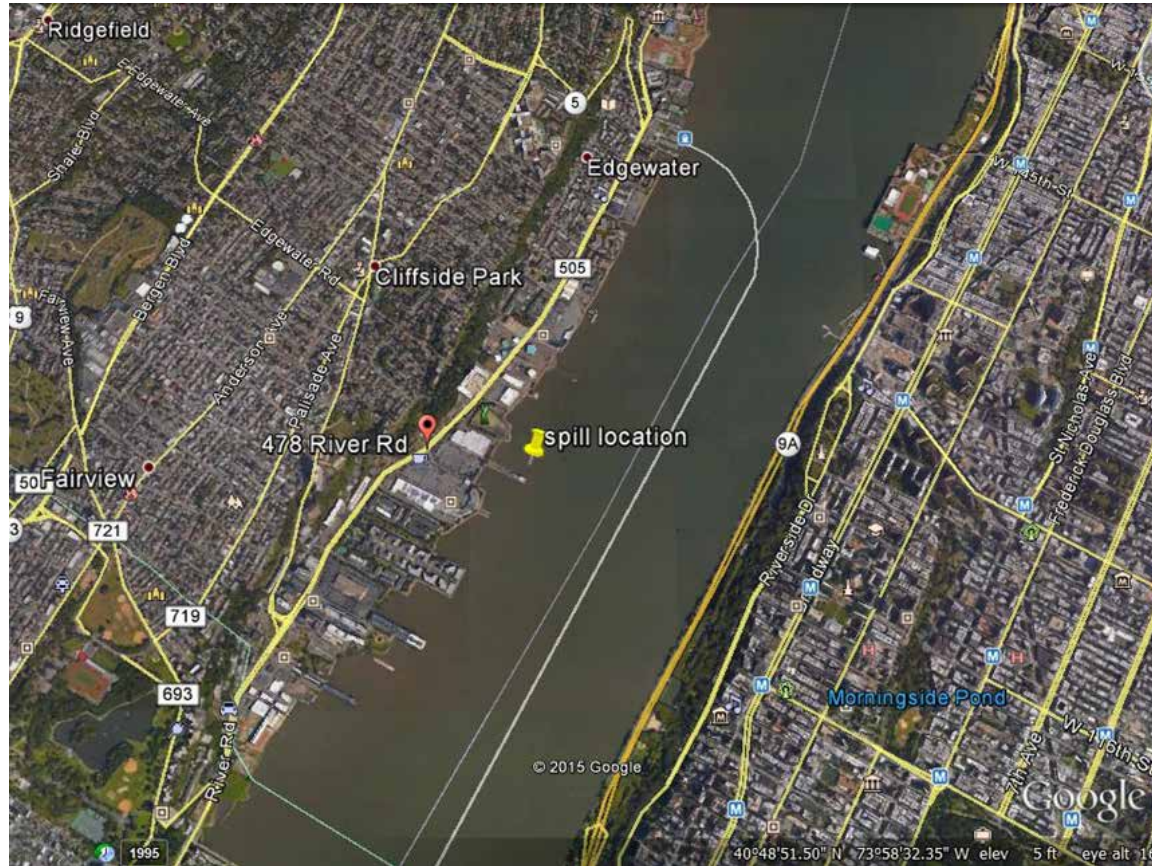
November EPA reports a train derailment

PCB contaminated soil in Nutley



December Abandoned Drums

Still our Bread & Butter



January 2nd Hudson Transmission Partners

Dielectric Fluid in the Hudson at Edgewater



Hudson Transmission Partners spill

Ken's Marine Services booming



Hudson Transmission Partners

Work barge



January 3rd Beeline Fuel on the Musconetcong

Partnering with EPA Reg 2



Beeline Fuel



February 18th Hillsborough Warehouse Fire



Hillsborough Fire

Partnered with EPA



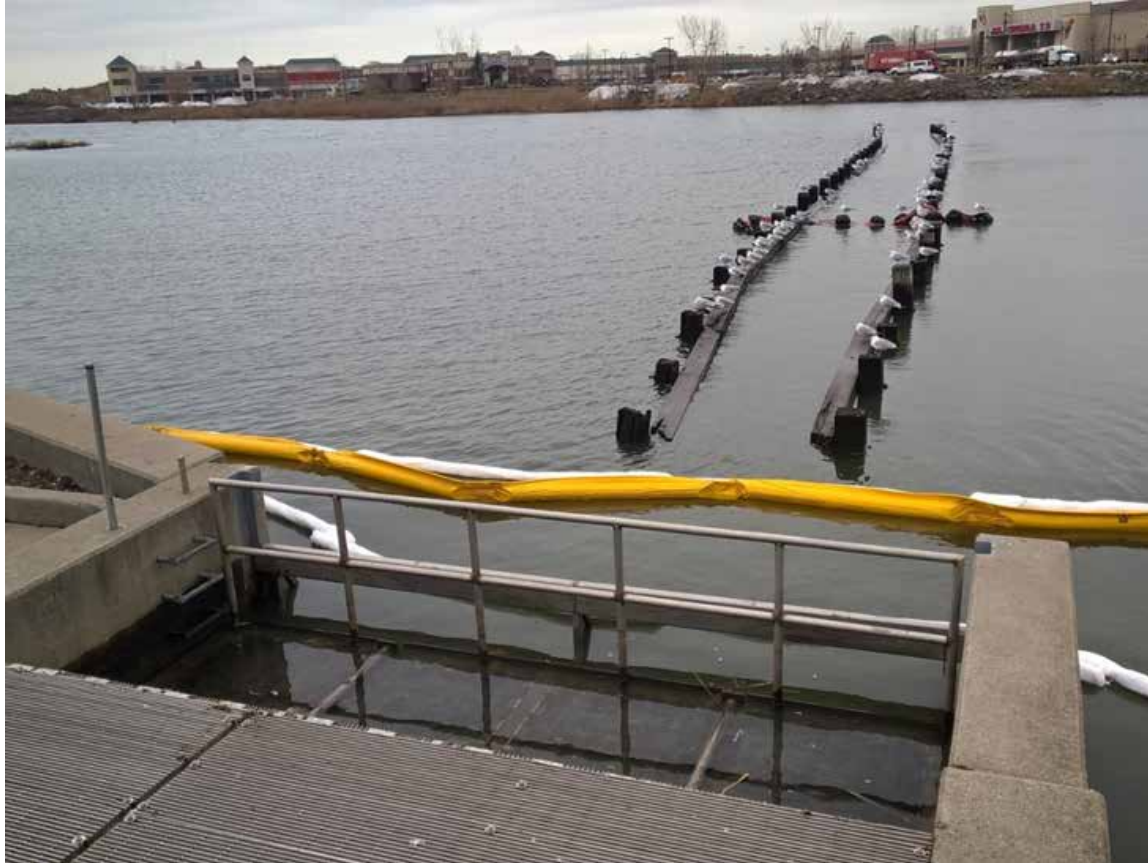
Sunken Fuel Barge Jersey City



February 22nd IMTT Pipeline leak



IMTT Pipeline leak



IMTT Pipeline leak Outfall boomed



IMTT Pipeline leak



IMTT Pipeline leak

Punctured pipe



IMTT



April 6th Irvington

Water main break washed out an underground utility causing a spill of about 27,000 gallons of dielectric fluid



Elizabeth River Irvington



Elizabeth River

4-5 miles of river affected



Manya skimmer on the Elizabeth River



Staging area for waste and contaminated debris

Elizabeth River cleanup