



U.S. Department of Energy
National Nuclear Security Administration
NA-84 Office of Nuclear Incident Response

DOE Radiological Assistance Program

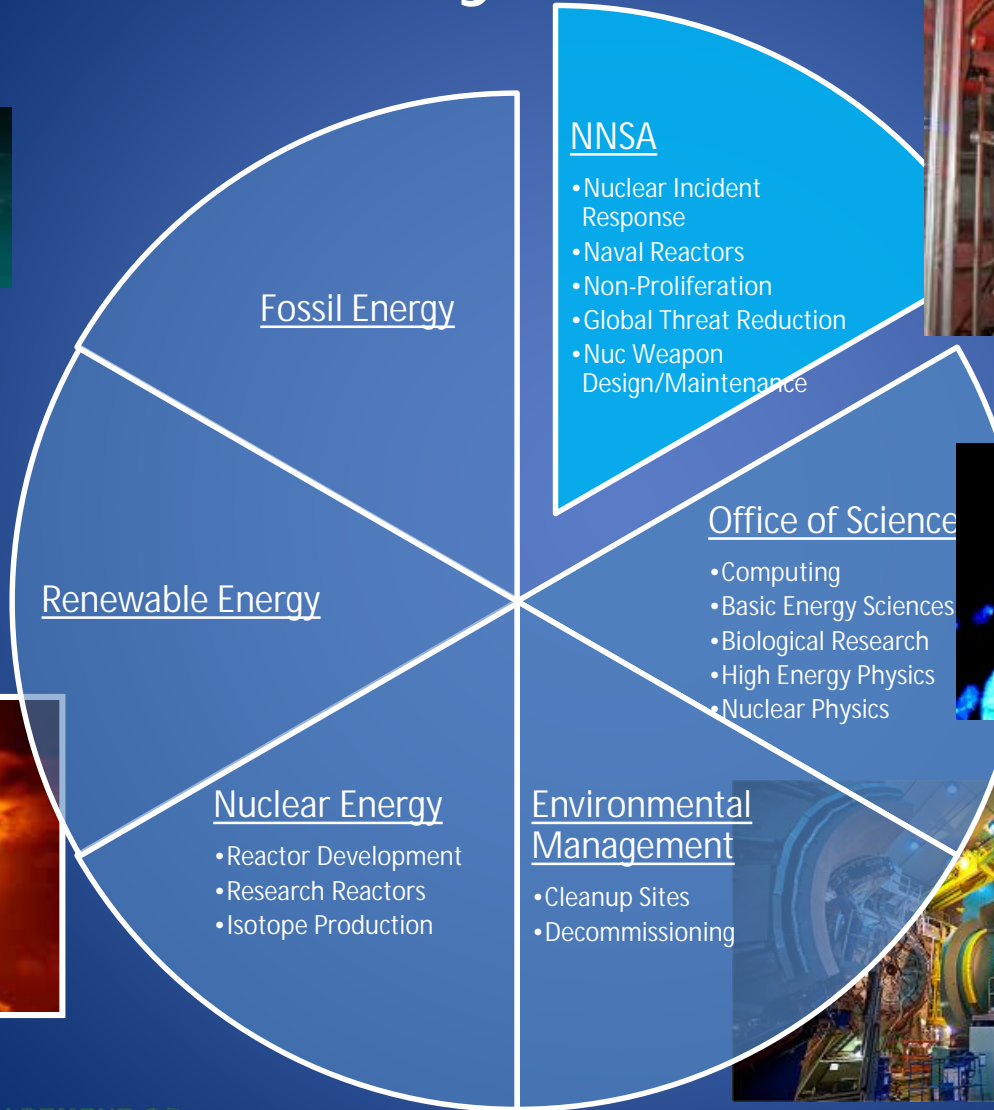
- Bringing Assets To Bear

Lee Michel
Training/Outreach Coordinator
RAP Region 1





Why DOE?





DOE/NNSA

Nuclear Incident Response Capabilities

- Provide technical advice throughout the DOE/NNSA complex in response to:
 - Nuclear weapons accidents and incidents
 - Possible acts of radiological/nuclear terrorism
 - Radiological accidents
 - Lost or stolen radioactive materials
- Provide access to expertise in nuclear weapons design, nuclear/radiological materials characterization, and radiological detection and characterization
- Deployable capabilities configured for a rapid, time-phased response



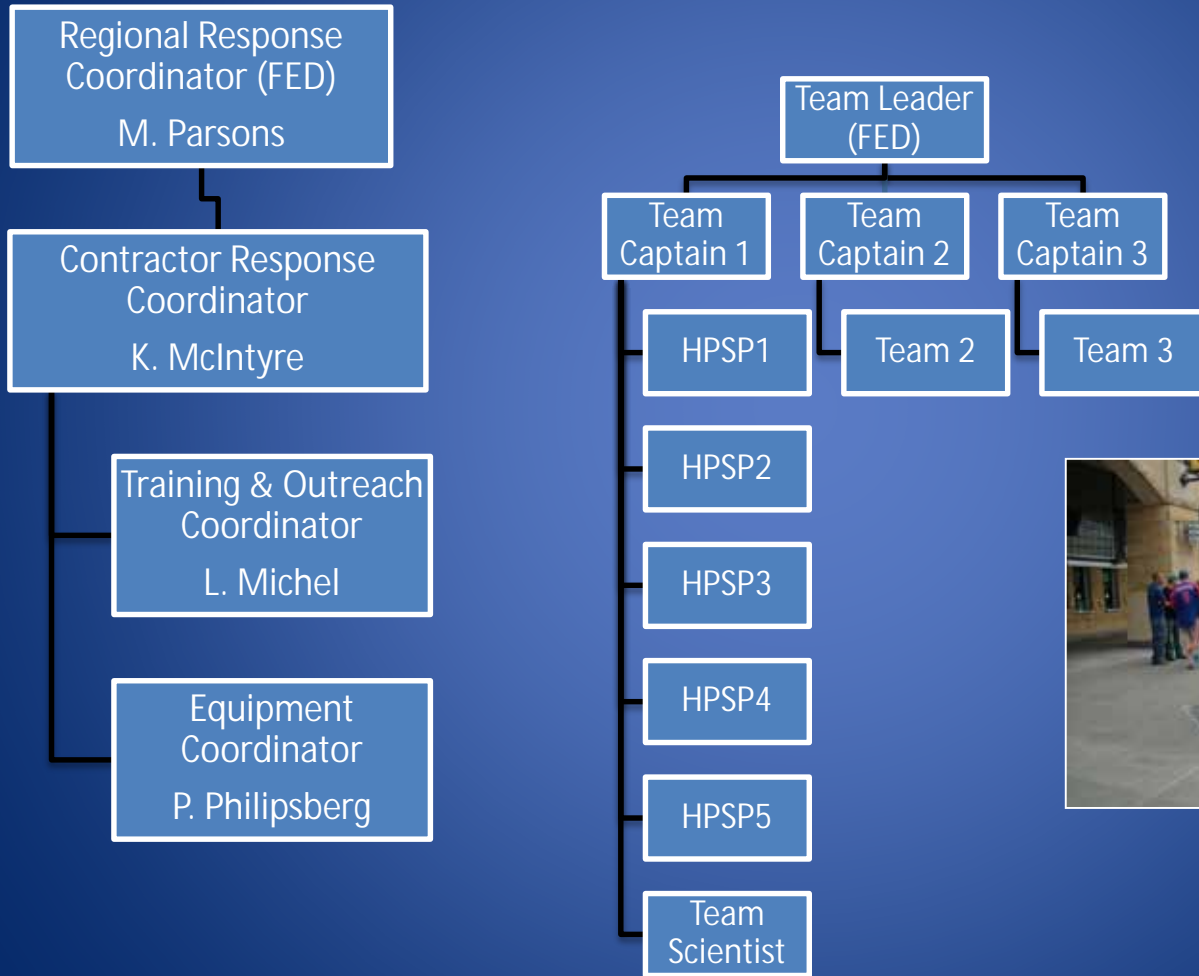
RAP Region 1

- RAP is implemented on a regional basis to ensure a timely response
 - Teams based at major DOE Laboratory locations (except R0)
- RAP is a unique national asset
 - Highly trained & skilled scientific & health physics personnel
 - Unparalleled radiological expertise among National/State/Local Emergency Response assets





RAP Region 1 Configuration





RAP Mission

Provides DOE first response capability to Federal, State, local and tribal governments for incidents involving radiological incidents





Radiological Assistance Program



Provides first response capability to Federal, State, local governments for incidents involving radiological emergencies

Capabilities

Rapid Response – 24/7/365

Search for Radiological Material

- ✦ Lost/Stolen Source Materials
- ✦ Determine Technical Search Parameters
- ✦ Deploy Specialized Search Equipment
- ✦ Advise Law Enforcement
- ✦ Alarm Adjudication

Characterize Radiation Environment

- ✦ Initial Assessment
- ✦ TRIAGE capability
- ✦ Area Monitoring
- ✦ Contamination Control
- ✦ Decontamination

Advise on Public Safety

Material Recovery

Activation of other DOE assets



RAP Missions

Crisis Response

Consequence Management

Detection & Search

Stabilization

Big CM

Little CM

PRND

Search

JTOT Checklist

Fukushima

Post
Det IND

Fed Ex
Truck

Off Site
Contam
Events

NSSEs

SEARs

RNSO
Low
Threat:
Local
Response

RNSO
High
Threat:
National
Response



NNSA Office of Nuclear Incident Response (NA-84)

CRISIS

CONSEQUENCE

Nuclear / Radiological
Advisory Team

Federal Radiological Monitoring
Assessment Center

Joint Technical
Operations Team

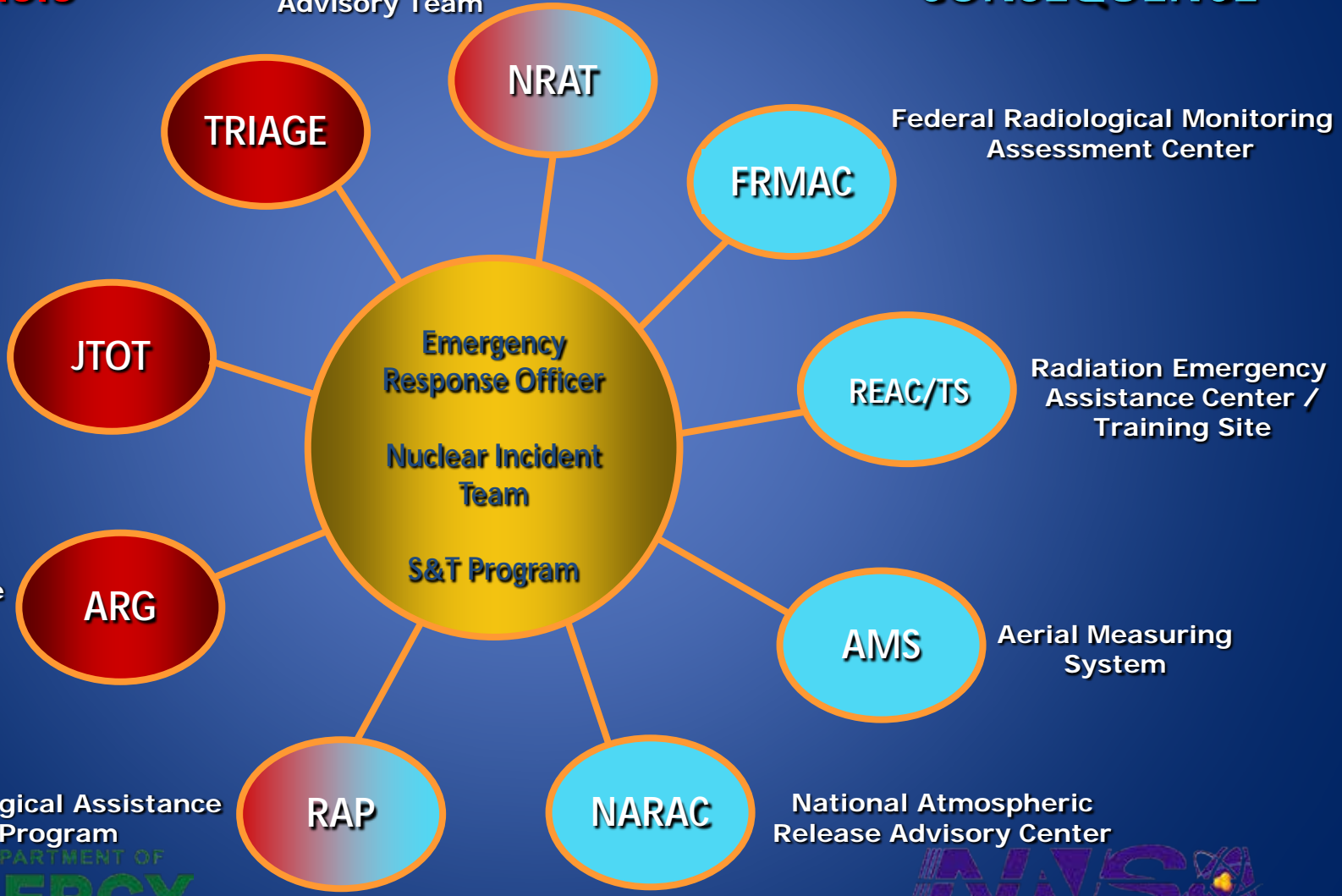
Radiation Emergency
Assistance Center /
Training Site

Accident Response
Group

Aerial Measuring
System

Radiological Assistance
Program

National Atmospheric
Release Advisory Center





RAP Assistance

- RAP supports and provides assistance to the appropriate on-scene authority
- RAP Teams do not preempt State, Local, or Tribal authority
- The primary responsibility for the incident remains with the owner of the radioactive material
- RAP involvement ends when:
 - There are other sufficient resources (state/local/private) at the scene or
 - Assistance is no longer needed.





RAP Assistance

- RAP is:
 - Not a first on scene responder, but likely to be the first DOE ground asset to arrive
 - Not prepared for chemical and biological assessment
 - Prepared to provide on scene training to HAZMAT responders





RAP Region 1





RAP Mission Response

- Fully mobilized within 2 hours
- On scene within 6 hours
- Deployment by dedicated response vehicles and/or USCG/CBP assistance





Standard Response Equipment

- Radiation Detection
 - Alpha, Beta, Gamma, Neutron
- Gamma Spectroscopy Systems
 - NaI and HPGe based instruments
- Air Sampling
 - High/Low volume
- Communications Gear
 - Radios
 - Repeaters
 - Satellite phones
 - Secure phones
 - Hotspots
 - Cellular Signal Boosters
- PPE & Dosimetry





RAP Mission Profiles

- Routine 'we found a box' missions
- Searches/Surveys/Field Sampling
- Lost/stolen radioactive materials
- Nuclear Power Plant accidents
- Nuclear weapons accidents and other significant incidents
- Acts of radiological/nuclear terrorism





How Has the RAP Mission Changed?

- While the documented RAP mission has not changed, Region 1 deployments since the WTC response are largely in the Preventive Radiological/Nuclear Detection (PRND) arena.
- NA-84 is currently refining a Mission Analysis to determine if the Regions are appropriately staffed and equipped for what is perceived to be their *Primary* mission.
- Region 1 Missions are primarily PRND and Search

"The greatest threat before humanity today is the possibility of a secret and sudden attack with chemical or biological or radiological or nuclear weapons."

Former President George W. Bush
February 11, 2004

"...the greatest threat to United States and global security is no longer a nuclear exchange between nations, but nuclear terrorism by violent extremists..."

President Barack H. Obama
April 6, 2010





What is a Typical Region 1 PRND Mission?

- Usually for DHS Special Event Activity Rating (SEAR) 1 or 2 events
- Searching for illicit radiological/nuclear materials
- Can have many components
 - Mobile surveys
 - Choke point monitoring of vehicles/people
 - Roving foot patrols
 - Venue surveys
 - Aerial surveys
 - Marine surveys





Recent Region 1 PRND Missions

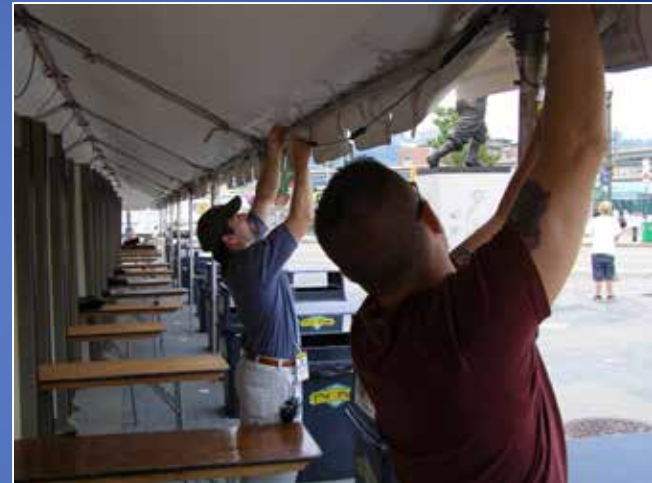
- 2015 Papal Visit
- Superbowl 47, New Orleans
- Superbowl 48, NY/NJ
- Boston Marathon
- Presidential Inauguration
- New Years Eve, Times Square
- Rockefeller Center Tree Lighting Ceremony
- United Nations General Assembly
- US Tennis Open
- Baltimore Grand Prix





PRND Training/Support

- Region 1 provides training and support to several agencies
 - Ongoing contact for PRND activity
 - FBI NYFO
 - FBI Newark
 - FBI Philadelphia
 - FBI Albany
 - NY Joint Terrorism Task Force
 - US Secret Service
 - DHS DNDO





PRND Training/Support

- Training/exercise support
 - Federal
 - National Guard Civil Support Teams (Maine – Maryland)
 - DHS TSA
 - Stabilization Team – NY Metropolitan area
 - US Navy (Groton, CT; Portsmouth, NH; Schenectady, NY)
 - FEMA
 - Regional
 - New England Radiological Health Committee





PRND Training/Support

- Training/exercise support (cont.)
 - State
 - CT
 - MD
 - MA
 - NH
 - NY
 - PA
 - VT
 - Local
 - Thunder Exercise Series (Penn State, Sloan Kettering, MIT, Columbia University, Boston Children's Hospital)
 - FDNY
 - Suffolk/Nassau County PD, DOH, SC Terrorism Response Task Force
 - Transportation Emergency Preparedness Training





Special Events





Presidential Inauguration





G20 Summit





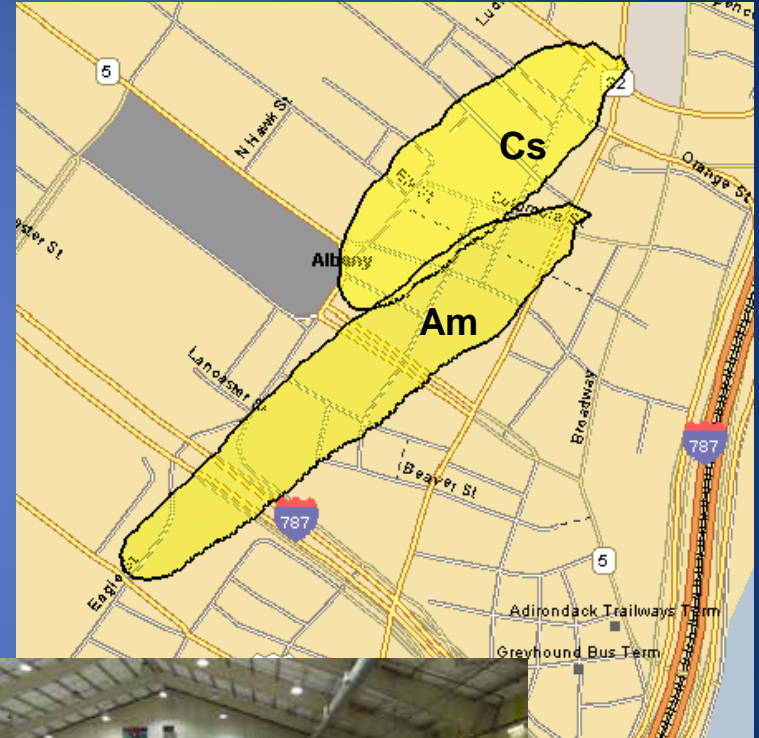
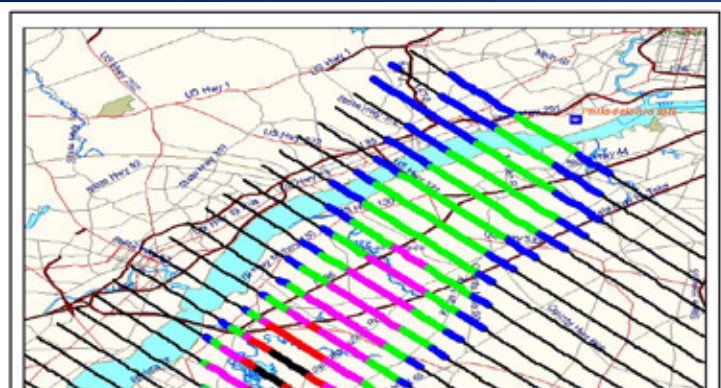
Sports Events



Exercises



Empire09



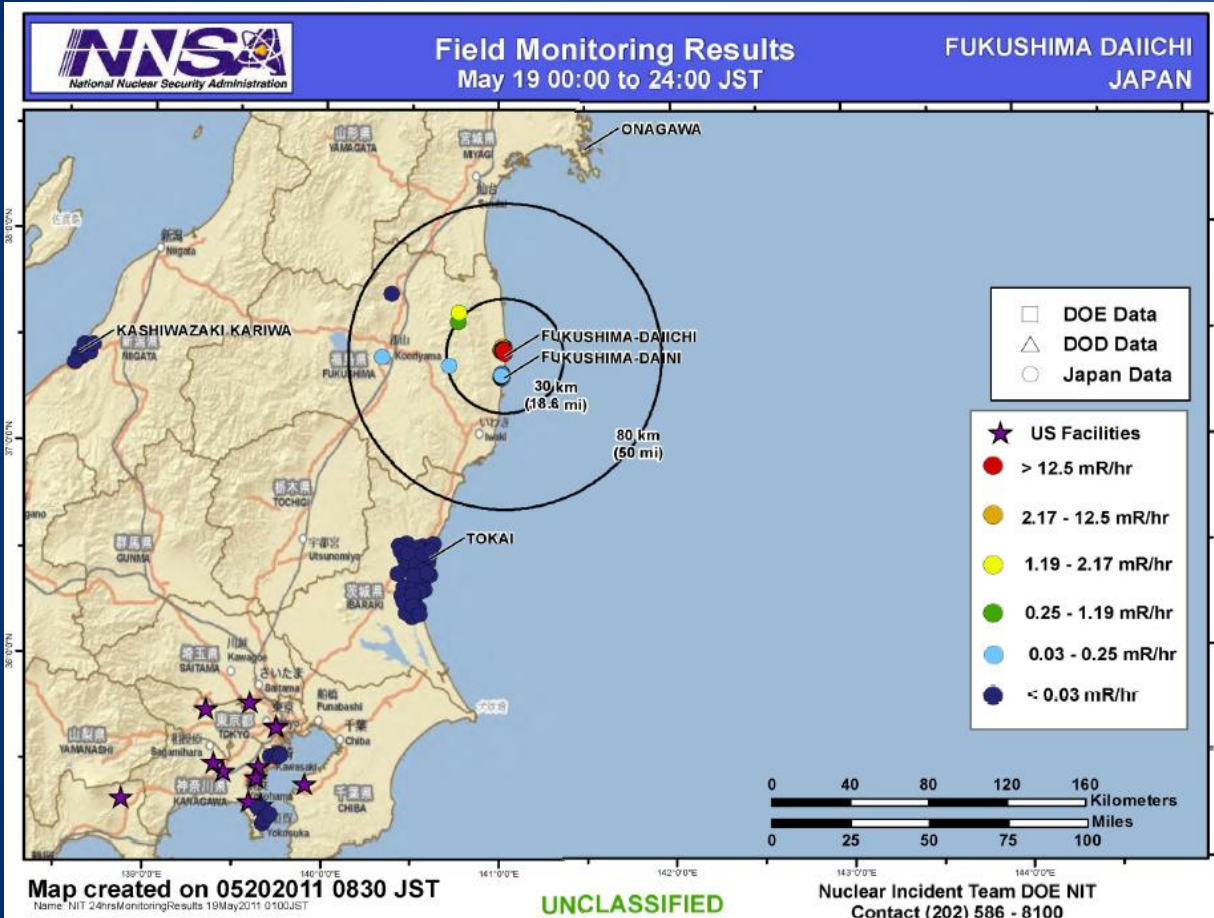


Deployments





Fukushima





Contact Information

Emergency Assistance

RAP Region 1

(631) 344-2200

DOE Watch Office

(202) 586-8100

Mark Parsons (Regional Response
Coordinator)

(Office): (631) 344-7978

(Cell): (631) 466-1927

PARSONS@BNL.GOV

Lee Michel (Training/Outreach Coordinator)

(Office): (631) 344-6306

(Cell): (631) 466-2001

MICHEL@BNL.GOV

