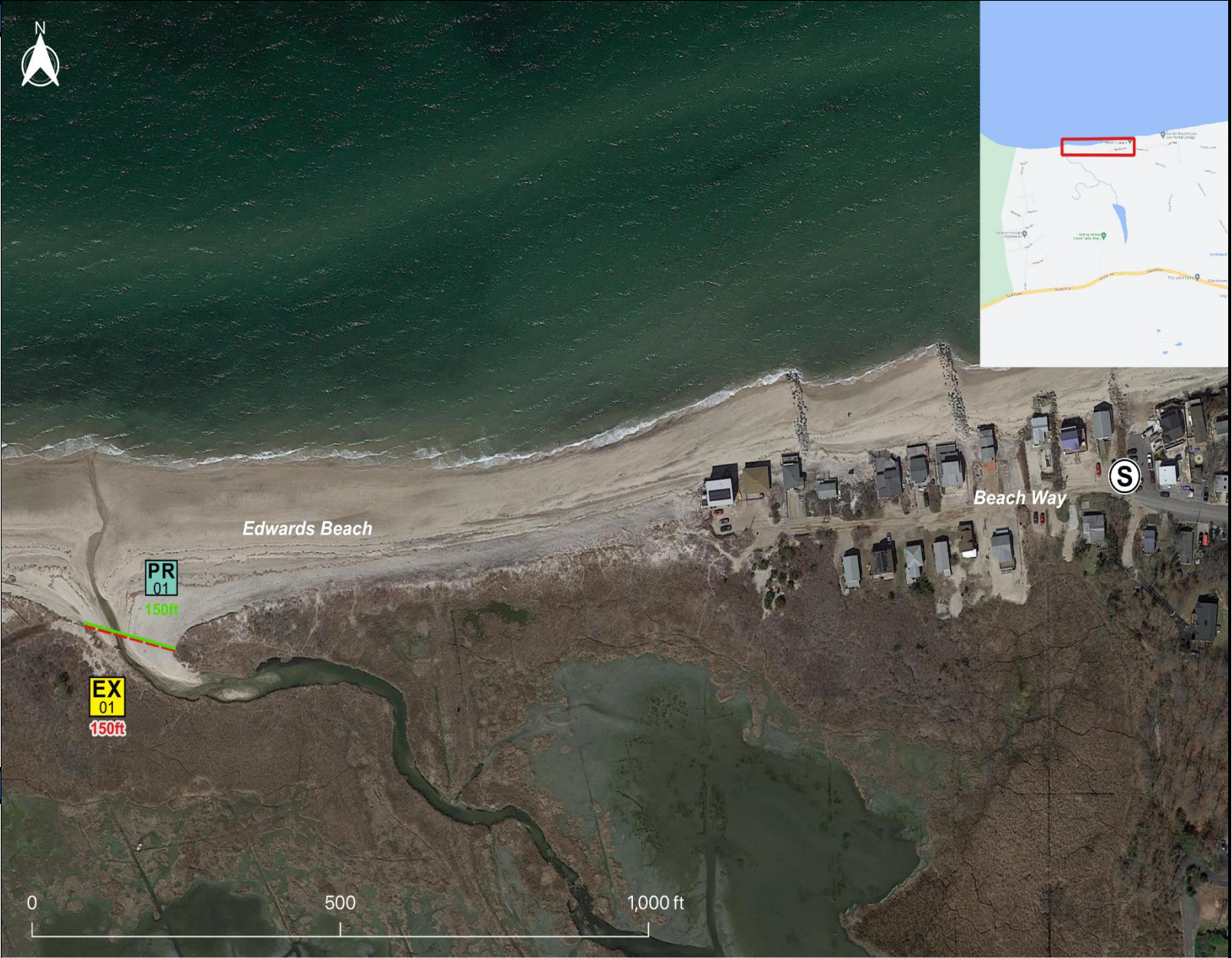


Tactics Legend

- DF** Deflection Booming
- DV** Diversion Booming
- EX** Exclusion Booming
- FO** Free Oil Recovery
- PR** Passive Recovery
- SR** Shoreside Recovery
- S** Staging Area
-  Boat Ramp
- TG** Tide Gate
-  Protected-Water Boom
-  Open-Water Boom
-  Snare/ Sorbent Boom



Equipment - All Tactics

Boom(ft)	150
Marine anchors	0
Shore anchors	2
Sorbent Boom(ft)	150
FO Recovery Sys	0
Shore Responders	2
Boat Responders	2
Boats	2

Response Trailer and GIS Data Information

CT DEEP has 6 pre-positioned oil spill response trailers, each with 1,000 ft (one with 5,000 ft) of boom and other equipment. Contact CT DEEP Emergency Dispatch for more information.

NY DEC has pre-positioned oil spill response trailers equipped with boom, absorbent material and other equipment. Contact NY DEC Oil Spill Hotline for more information.



Location

**Latitude:** 40° 57' 50.3994"  
**Longitude:** -72° 46' 19.2"  
**NOAA Chart #** 12354

Version  
2/6/2023

**Geographic Response Strategy**

**Baiting Hollow Creek LI03**

Tactic #	Purpose	Response Equipment	Deployment Resources	Deployment Notes
<b>EX-01</b> 	Prohibit oil slicks from entering a sensitive area	150 ft protected water boom marine anchor system 2 shoreline anchor system	2 shore responders 1 response boats 1 boat operators	Tend through tidal changes. Deploy boom as depicted to exclude oil from sensitive areas. Anchor every 200-300'. Not tide dependent Deploy shoreside anchor first.
		N/A	<b>Testing Date</b>	
<b>PR-01</b> 	Remove spilled oil by collecting it in a sorbent material	150 ft sorbent boom 150 ft sorbent pom-poms 4 anchor stakes	2 shore responders	Place and stake snare or sorbent boom in areas that are likely to pool and collect oil and across the mouths of the streams and intertidal areas. Use snare boom for persistent oils and sorbent boom for non-persistent oils. Approach the streams and intertidal areas on rising tide. Replace as necessary to maximize oil recovery.
		N/A	<b>Testing Date</b>	



**Local contacts**

Audubon New York	<a href="tel:516-922-3200">516-922-3200</a>
Long Island Soundkeeper	<a href="tel:203-854-5330">203-854-5330</a>
Mattituck Fire Department	<a href="tel:631-298-8837">631-298-8837</a>
Mt Sinai Fire Department	<a href="tel:631-473-2418">631-473-2418</a>
Port Jefferson Fire Department	<a href="tel:631-473-3232">631-473-3232</a>
Riverhead Terminal	<a href="tel:800-937-2682">800-937-2682</a>
Riverhead Fire Department	<a href="tel:631-727-2750">631-727-2750</a>
Rocky Point Fire Department	<a href="tel:631-744-4102">631-744-4102</a>
Sound Beach Fire Department	<a href="tel:631-744-2151">631-744-2151</a>
Southold Fire Department	<a href="tel:631-765-3385">631-765-3385</a>
Wading River Fire Department	<a href="tel:631-929-4340">631-929-4340</a>
NY Div. of Fish and Wildlife	<a href="tel:631-444-0280">631-444-0280</a>
NY Div. of Marine Resources	<a href="tel:631-444-0430">631-444-0430</a>
NY DEC Oil Spill Hotline	<a href="tel:1-800-457-7362">1-800-457-7362(24 hr)</a>
NY State Office of Emergency Mgmnt	<a href="tel:518-292-2200">518-292-2200 (24 hr)</a>
USFWS LI Field Office	<a href="tel:631-286-0485">631-286-0485</a>
USCG Sector Long Island Sound	<a href="tel:203-468-4401">203-468-4401</a>
National Response Center	<a href="tel:800-424-8802">800-424-8802</a>



*Baiting Hollow Creek entrance looking southwest at mid-tide*



*Edwards Beach staging area at end of Edwards Ave looking southeast*

**Resources Protected**

See most current data in NOAA Environmental Sensitivity Index (ESI) Map 24 or reference applicable data layer in NOAA Environmental Response Management Application (ERMA)

**Navigational Hazards**

Significant tide range in this area.

**Special Considerations**

Survey site prior to deployment and modify deployment tactics and techniques as appropriate based on observed conditions. If ice is present GRS tactics and strategies must be reevaluated. Beach Berm/Underflow Dam tactics can be considered but site access may be difficult.