

Alaska Liquid Oil Piping/Pipelines Jurisdictional Tool Map Atlas

March 2017

Technical Direction Document Number 16-03-0001

Prepared for:

United States Environmental Protection Agency

222 West 7th Avenue, Suite #19

Anchorage, Alaska 99513

Prepared by:

ECOLOGY AND ENVIRONMENT, INC.

1007 West 3rd Avenue, Suite 201

Anchorage, Alaska 99501

List of Figures

1. North Slope – East
2. North Slope – West
3. Cook Inlet - Western Cook Inlet and Kenai Peninsula
4. Cook Inlet – Nikiski, Alaska
5. Cook Inlet – Anchorage, Alaska
6. North Pole, Alaska
7. Valdez, Alaska
8. Valdez Marine Terminal, Detailed View

Purpose: A tool to assist in determining the regulatory jurisdiction of liquid oil piping and pipelines by federal agencies in Alaska.

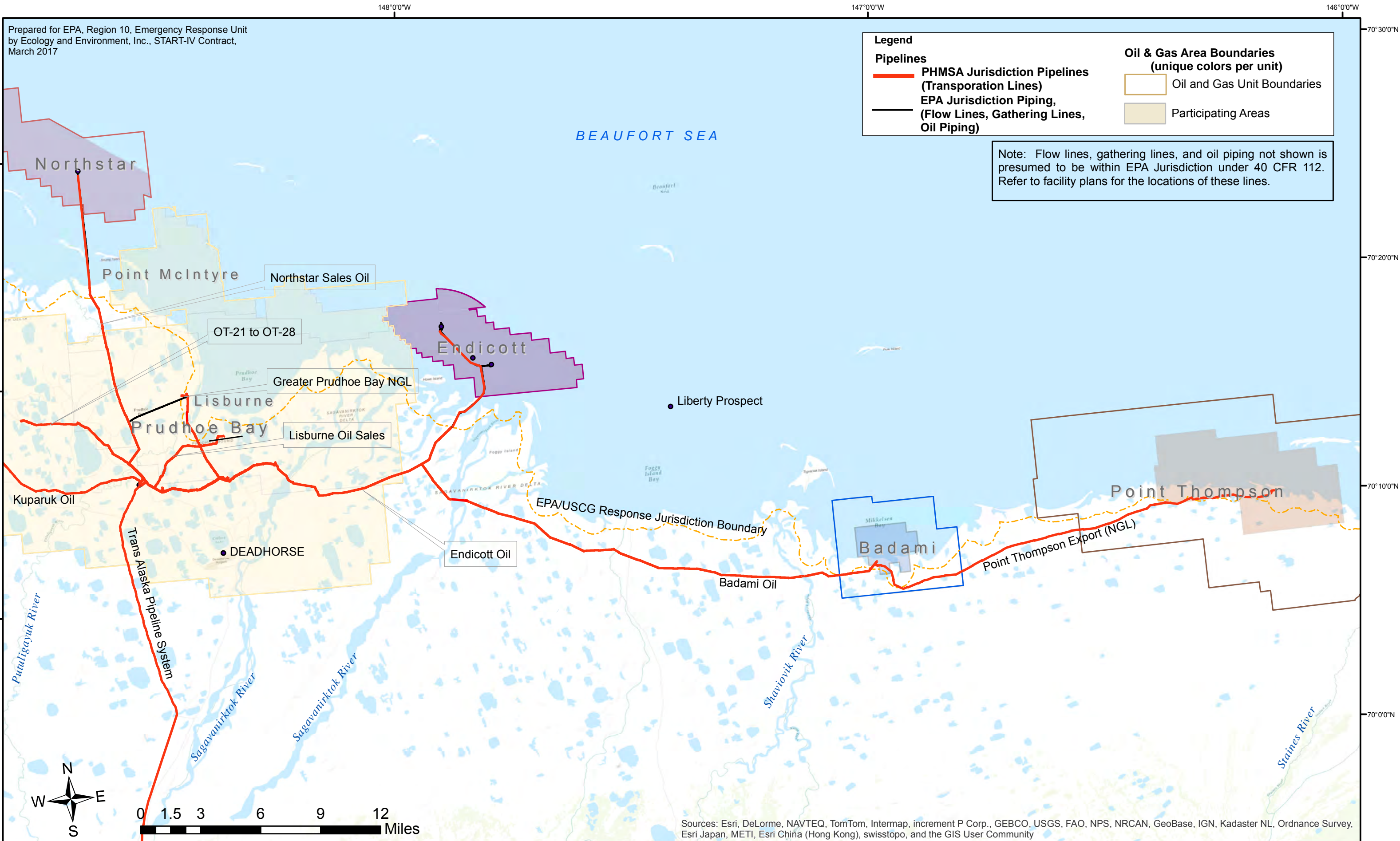
Limitations on Use: The figures produced are not intended to be used to determine response jurisdiction. These figures also do not depict the regulatory jurisdiction of the State of Alaska.

Sources: This tool was developed using Geographic Information System (GIS) data provided by the agencies and corporations:

- U.S. Department of Transportation (DOT), National Pipeline Mapping System;
- State of Alaska, Department of Natural Resources, State Pipeline Coordinators Section;
- State of Alaska, Department of Natural Resources, Division of Oil and Gas;
- Hilcorp Alaska, LLC;
- Eni (via Alaska Clean Seas); and
- Glacier Energy (via Alaska Clean Seas)

Additional pipeline location and jurisdiction information was obtained from meetings and discussion with the following agencies:

- U.S. DOT, Pipeline and Hazardous Materials Safety Administration, Office of Pipeline Safety;
- U.S. Coast Guard, Sector Anchorage and Marine Safety Unit Valdez;
- U.S. Department of the Interior, Bureau of Land Management, Branch of Pipeline Monitoring and the Division of Lands;
- State of Alaska, Department of Environmental Conservation, Division of Spill Prevention and Response, Prevention, Preparedness and Response Program, Integrity and Engineering Unit; and
- State of Alaska, Department of Natural Resources, State Pipeline Coordinators Section

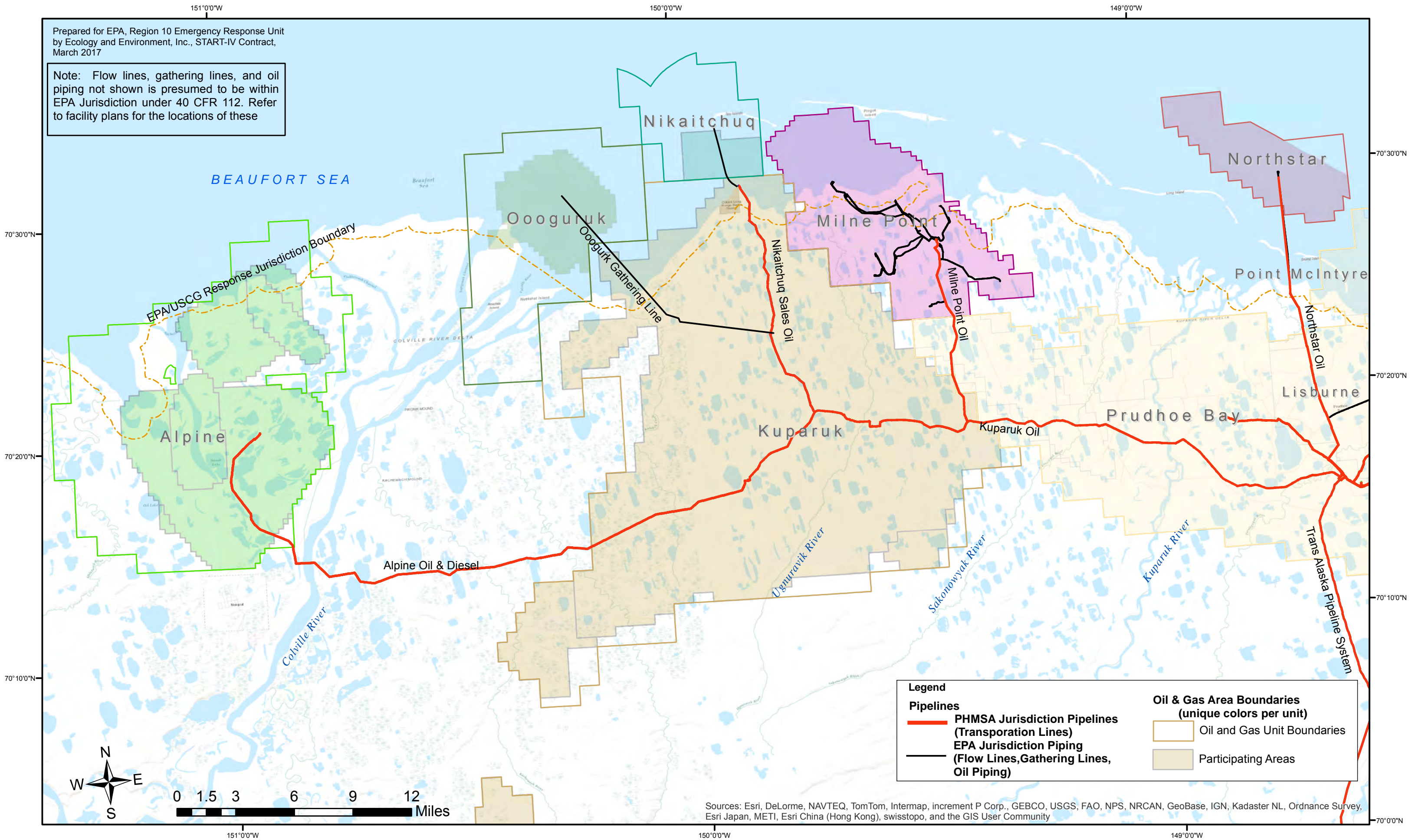


North Slope Oil Fields - East

Liquid Oil Piping/Pipeline Jurisdictional Tool

Prepared for EPA, Region 10 Emergency Response Unit by Ecology and Environment, Inc., START-IV Contract, March 2017

Note: Flow lines, gathering lines, and oil piping not shown is presumed to be within EPA Jurisdiction under 40 CFR 112. Refer to facility plans for the locations of these



| Legend | |
|---|---|
| Pipelines | Oil & Gas Area Boundaries (unique colors per unit) |
| PHMSA Jurisdiction Pipelines (Transportation Lines) | Oil and Gas Unit Boundaries |
| EPA Jurisdiction Piping (Flow Lines, Gathering Lines, Oil Piping) | Participating Areas |

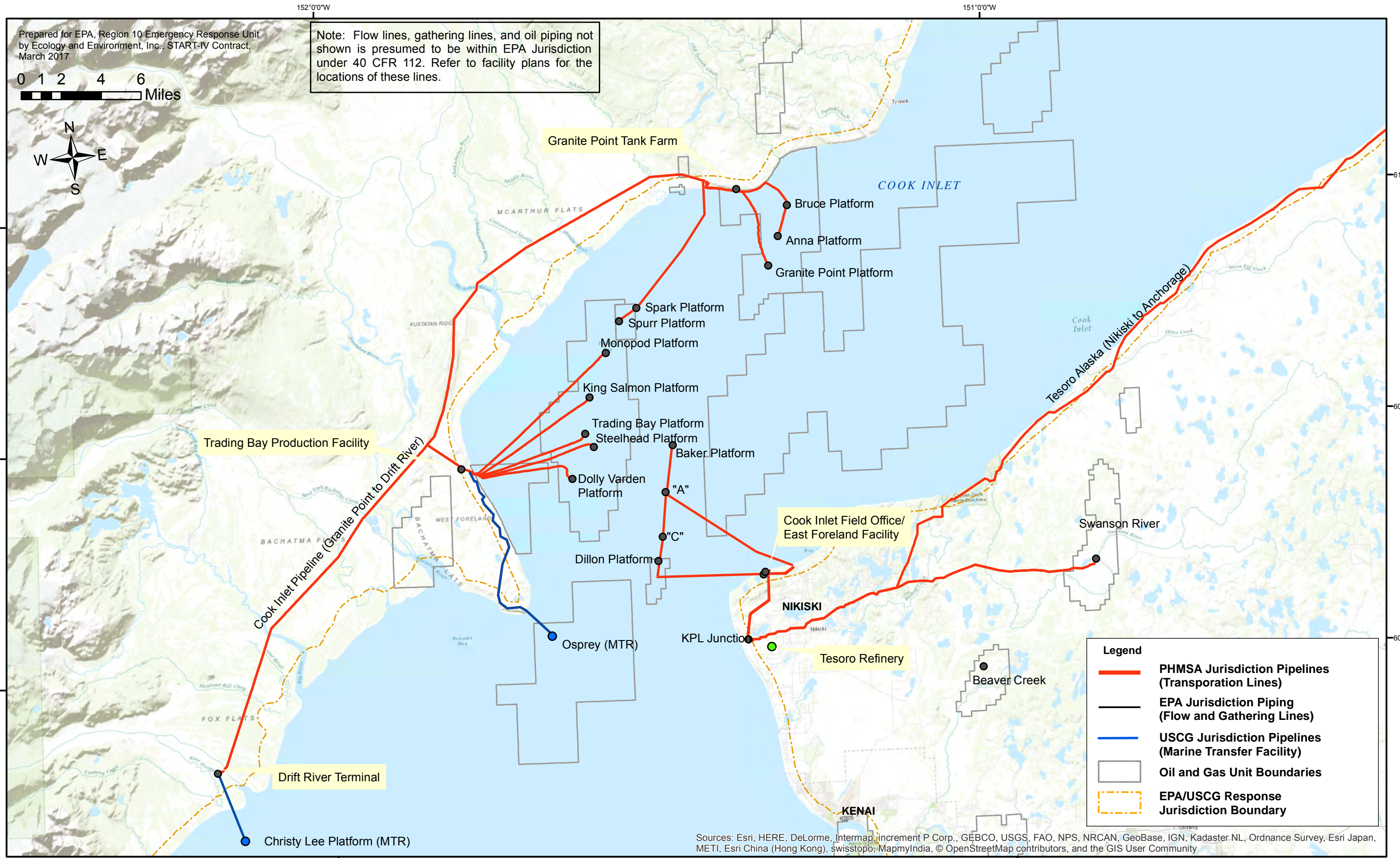
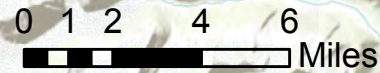
Sources: Esri, DeLorme, NAVTEQ, TomTom, Intermap, increment P Corp., GEBCO, USGS, FAO, NPS, NRCAN, GeoBase, IGN, Kadaster NL, Ordnance Survey, Esri Japan, METI, Esri China (Hong Kong), swisstopo, and the GIS User Community

North Slope Oil Fields - West

Liquid Oil Piping/Pipeline Jurisdictional Tool

Prepared for EPA, Region 10 Emergency Response Unit by Ecology and Environment, Inc., START-IV Contract, March 2017

Note: Flow lines, gathering lines, and oil piping not shown is presumed to be within EPA Jurisdiction under 40 CFR 112. Refer to facility plans for the locations of these lines.



Legend

- PHMSA Jurisdiction Pipelines (Transportation Lines)
- EPA Jurisdiction Piping (Flow and Gathering Lines)
- USCG Jurisdiction Pipelines (Marine Transfer Facility)
- Oil and Gas Unit Boundaries
- EPA/USCG Response Jurisdiction Boundary

Sources: Esri, HERE, DeLorme, Intermap, increment P Corp., GEBCO, USGS, FAO, NPS, NRCAN, GeoBase, IGN, Kadaster NL, Ordnance Survey, Esri Japan, METI, Esri China (Hong Kong), swisstopo, MapmyIndia, © OpenStreetMap contributors, and the GIS User Community

Cook Inlet - Western Cook Inlet and Kenai Peninsula

Liquid Oil Piping/Pipeline Jurisdictional Tool

Prepared for EPA, Region 10 Emergency Response Unit by Ecology and Environment, Inc., START-IV Contract, March 2017

151°25'0"W

151°20'0"W

60°42'0"N

60°42'0"N

COOK INLET

NIKISKI

Kenai Pipeline (crude)

Swanson River Pipeline (Crude)

Tesoro Alaska Pipeline (Refined Product)

Kenai Pipeline Junction

Tesoro/Kenai Pipeline Dock

Tesoro Refinery

USCG-Regulated Marine Transfer Facility

USCG-Regulated Marine Transfer Facility

EPA/USCG Response Jurisdiction Boundary

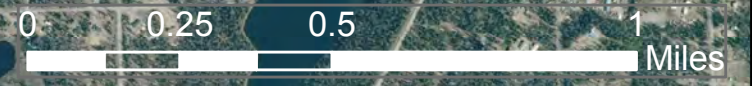
Conoco Philips LNG Dock

USCG-Regulated Marine Transfer Facility

Agrium Dock (Non-petroleum)

Tesoro Fuel Sales

Kenai Spur Highway



Legend

Pipelines

- PHMSA Jurisdiction Pipelines (Transportation Lines)
- EPA Jurisdiction Pipelines, (Flow Lines and Gathering Lines)

Note: Flow lines, gathering lines, and oil piping not shown is presumed to be within EPA Jurisdiction under 40 CFR 112. Refer to facility plans for the

Data courtesy of Digital Globe, SPOT/Airbus, USDA, Alaska DNR, DCCED, and DOT&PF.

151°25'0"W

151°20'0"W

60°40'0"N

60°40'0"N



Cook Inlet - Anchorage, Alaska

Liquid Oil Piping/Pipeline Jurisdictional Tool

147°21'W 147°21'W 147°21'W 147°20'W 147°19'W 147°19'W 147°18'W 147°18'W 147°18'W 147°17'W 147°16'W 147°16'W

Prepared for EPA, Region 10 Emergency Response Unit by Ecology and Environment, Inc., START-IV Contract, March 2017

Flint Hills (closed)/Petro Star Refinery Complex

Refinery pipeline system connects to GVEA pipeline.

Golden Valley Electric Power Generation Plant

GVEA PSI Crude Feeder and Residual Pipeline

NORTH POLE

Trans Alaska Pipeline System

Richardson Highway

Fairbanks-Eielson Pipeline (Location To be determined)

Old Richardson Highway

Moose Creek Flood Control Project

Tanana River



0 0.05 0.1 0.2 0.3 0.4 Miles

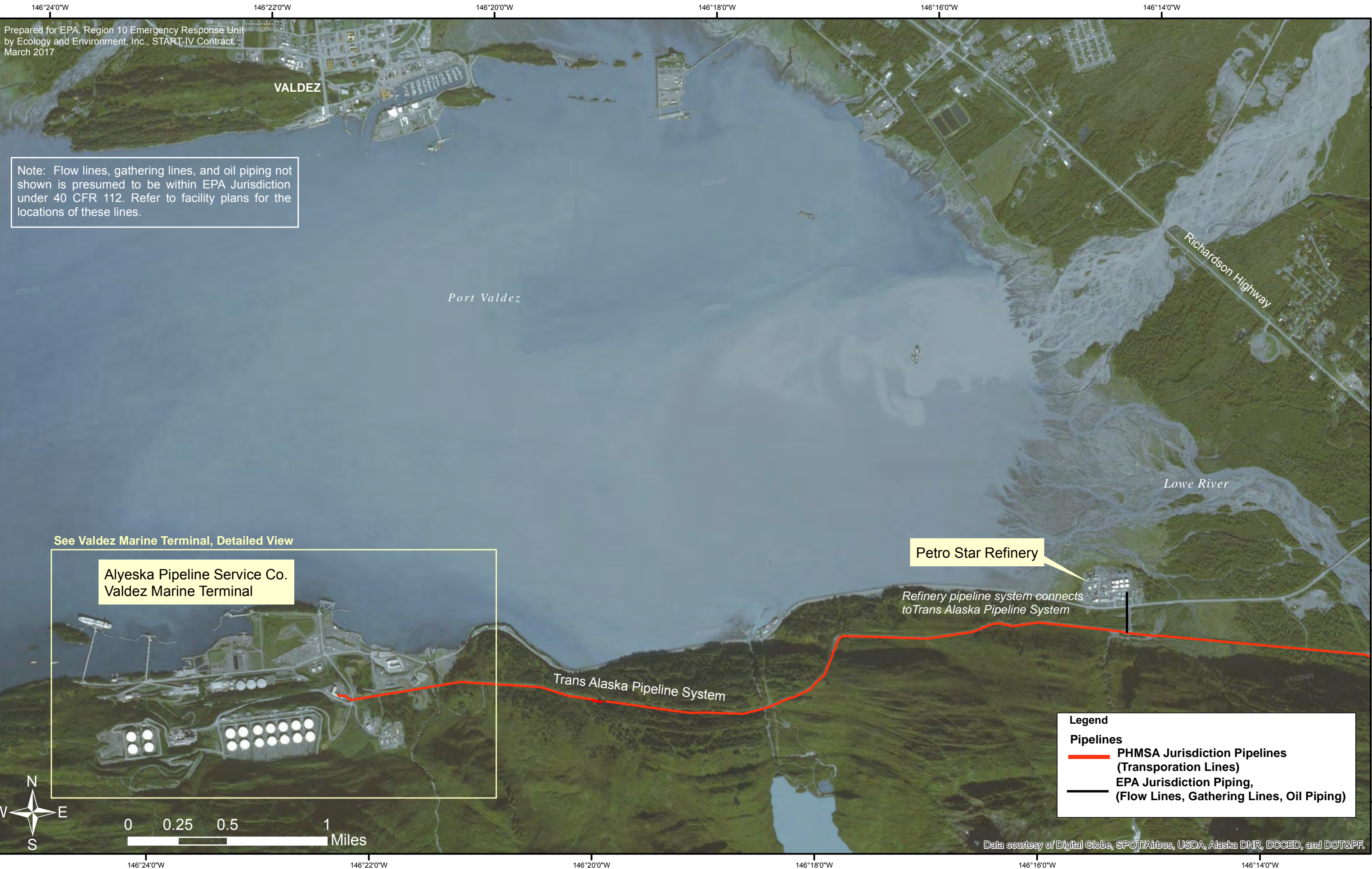
Note: Flow lines, gathering lines, and oil piping not shown is presumed to be within EPA Jurisdiction under 40 CFR 112. Refer to facility plans for the locations of these lines.

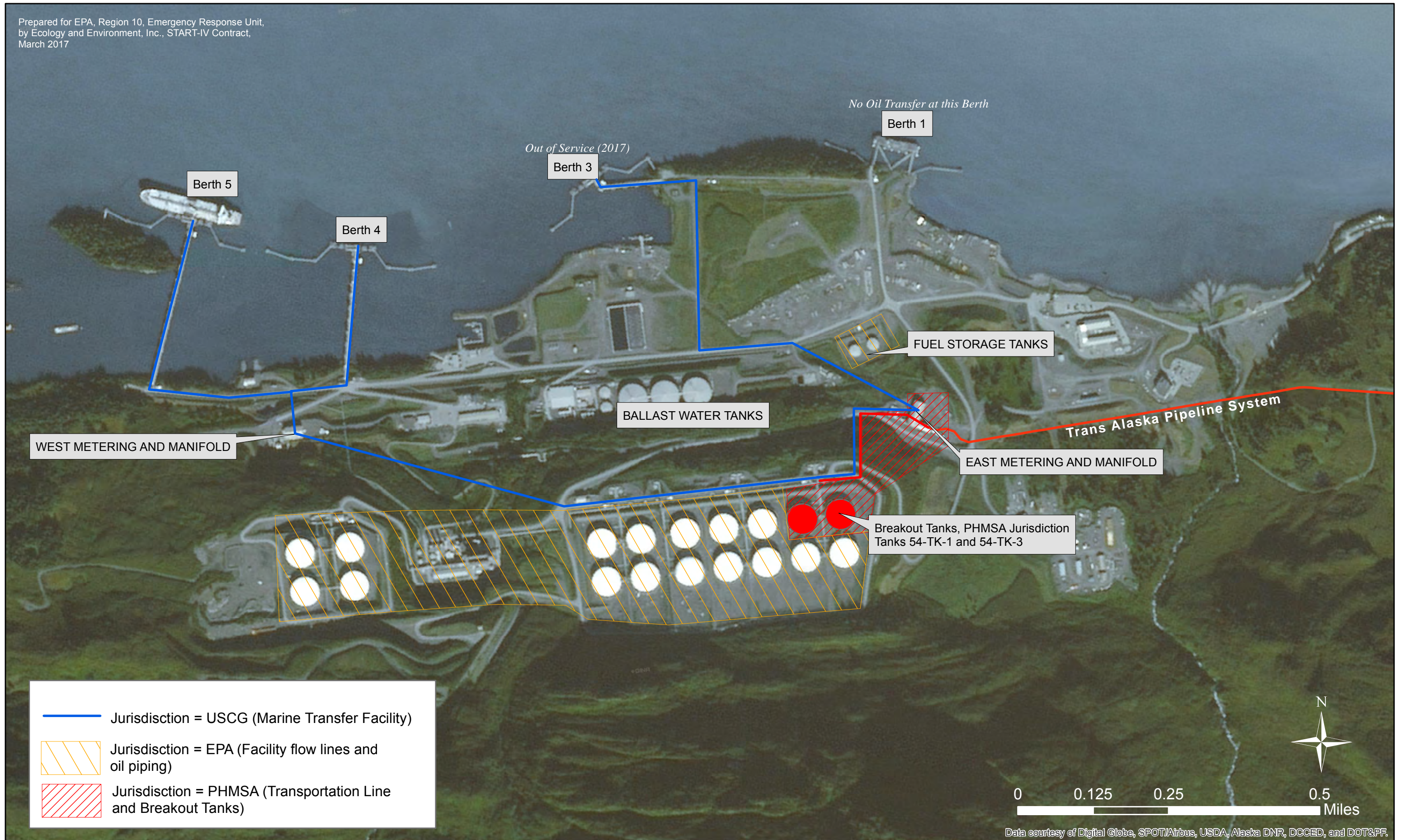
Legend

Pipelines

- PHMSA Jurisdiction Pipelines (Transportation Lines)
- EPA Jurisdiction Piping (Flow Lines, Gathering Lines and oil piping)

Source: Esri, DigitalGlobe, GeoEye, i-cubed, USDA, USGS, AEX, Getmapping, Aerogrid, IGN, IGP, swisstopo, and the GIS User Community





Valdez Marine Terminal, Detailed View

Liquid Oil Piping/Pipeline Jurisdictional Tool