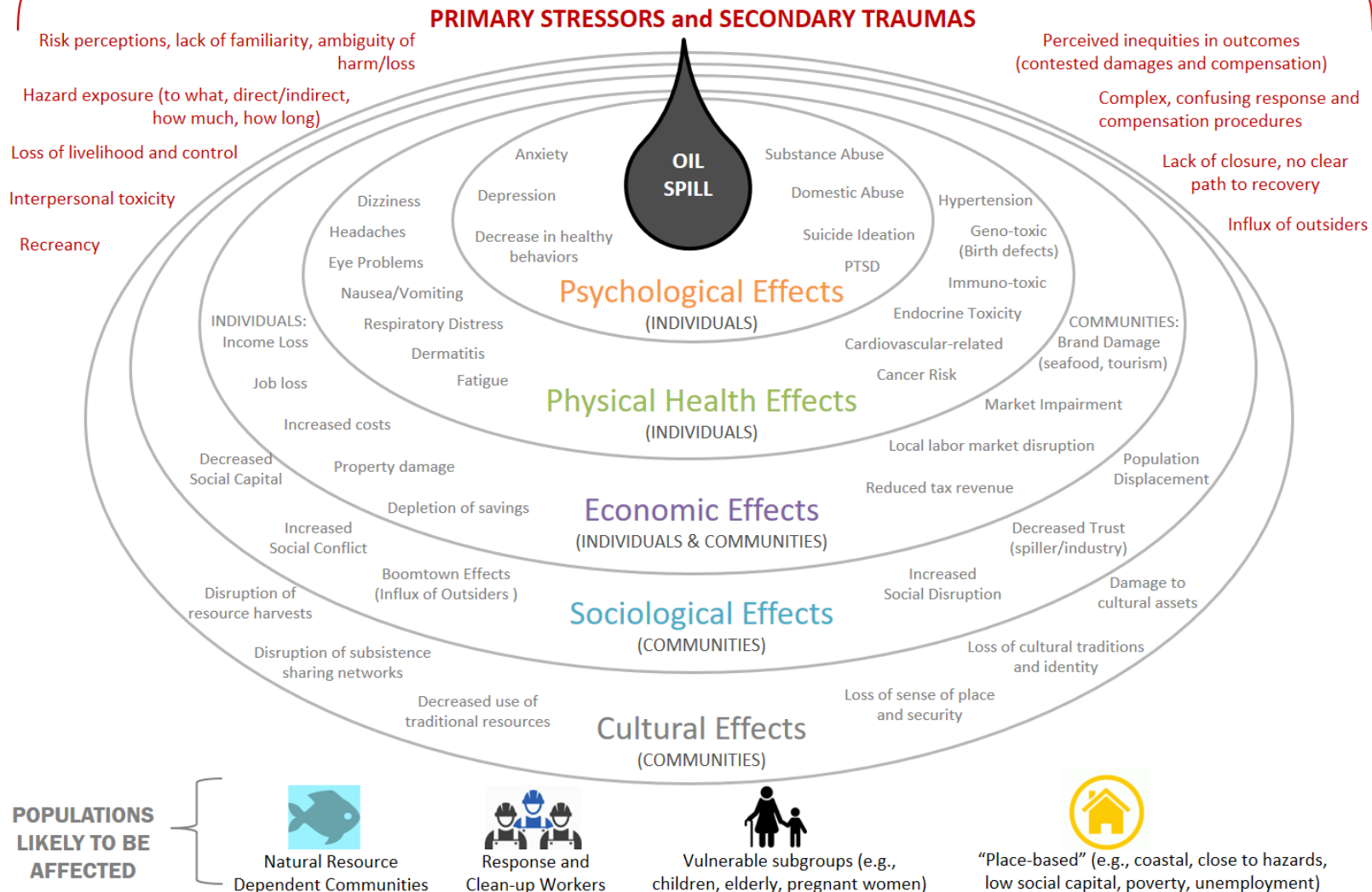


# Marine Oil Spills: Constellation of POTENTIAL Human Effects\*

\* Spill-specific conditions determine occurrence, type, scale

These effects also increase vulnerability to:

- Natural or other technological disasters
- Economic recession
- General life stressors (health, family, job)



For More  
Information  
visit QR  
code:



Figure developed by Keith Nicholls, Steve Picou, Selena McCord (University of South Alabama); Ann Hayward Walker (SEA Consulting Group); and Duane Gill (Oklahoma State University). Based on discussion at a 2017 workshop supported by the Gulf Research Program and a review of the literature.