




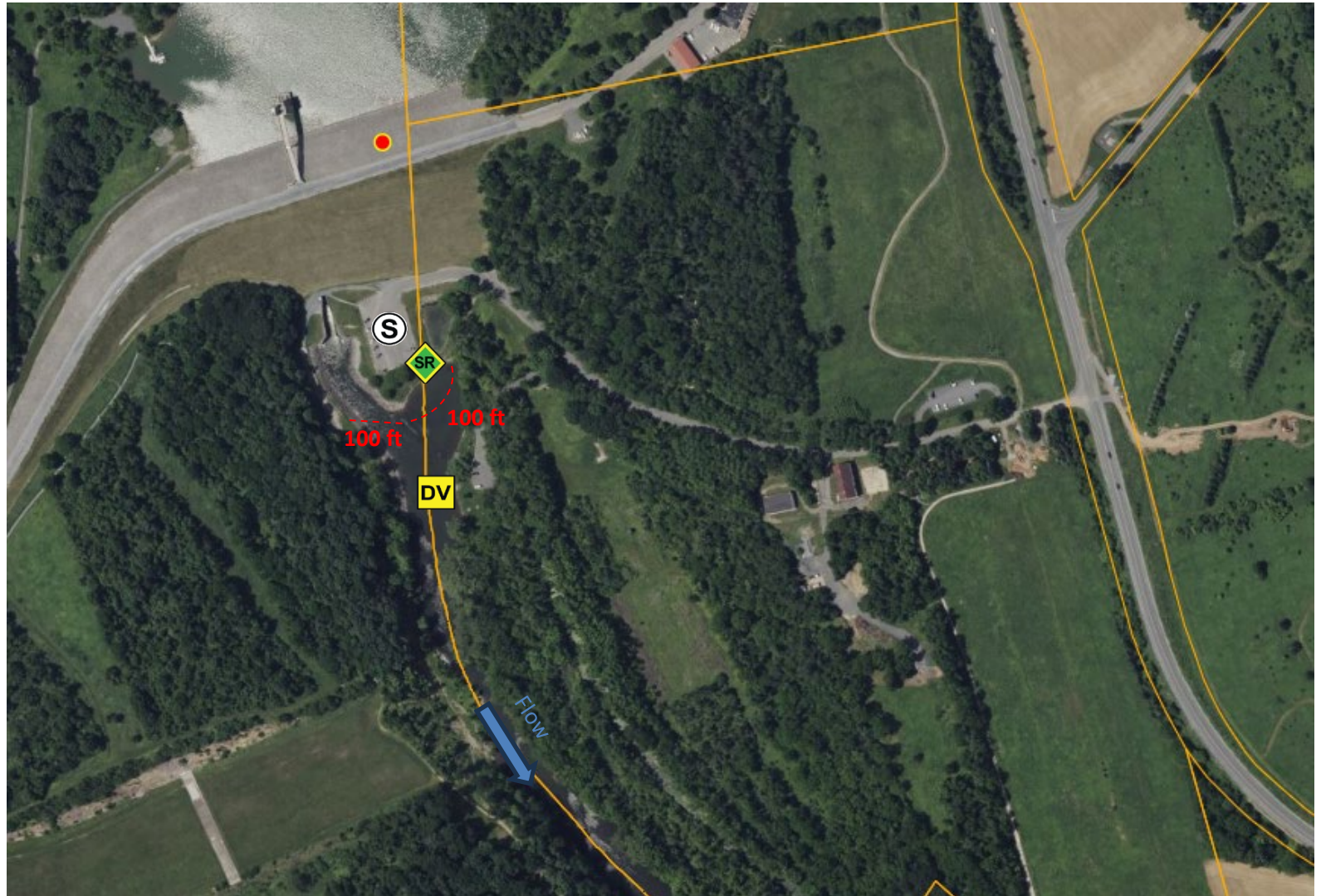


Tactics Legend

- DF** Deflection Booming
- DV** Diversion Booming
- EX** Exclusion Booming
- FO** Free Oil Recovery
- PR** Passive Recovery
- SR** Shoreside Recovery
- S** Staging Area
-  Boat Ramp
-  Kayak Ramp
- +++** Railroad
-  Protected-Water Boom
-  Protected-Water Boom (Ebb Tide)
-  Snare/ Sorbent Boom



Equipment - All Tactics

Boom(ft)	200
Boom Skirt (in)	6
Marine anchors	2
Shore anchors	2
Sorbent Boom(ft)	0
FO Recovery Sys	0
Shore Responders	4
Boat Responders	0
Boats	N/A

Version

12/03/2024



Tactics Deployment, Responder Safety, and GRP Data Information

Always consider on-scene conditions before deploying GRP tactics. Responder safety should always be the priority.

Vessel Requirements: Utilize inflatable vessel capable of operating in river depth conditions less than 5 feet. No suitable boat launch available.

Location Information

Latitude: 40.3772485488562
Longitude: -76.03036926858684
State: Pennsylvania

Lake						
Tactic #	Purpose	Response Equipment		Deployment Resources		Deployment Notes
DV-01 	Redirect spilled oil from one location or direction of travel to a specific site for recovery.	200 ft protected water boom 2 marine anchor system 2 shoreline anchor system		4 shore responders 0 response boats 0 boat operators 0 boat crew (min)		Anchor Type: Danforth 14, Shoreline anchor points. Strategy: Deploy boom as depicted to divert incoming oil to the collection site. Deploy shoreside anchor first. Single anchor system (rebar or U-posts) along shoreline with standard deployment into riverbed. Utilize 6" skirt boom due to shallow water depth. Anchor every 100' section on either end. Anchor shore side recovery skirt boom every 100'. Adjust configuration as necessary to reduce entrainment.
		N/A	Testing Date	N	Tested	
SR-01 	Remove spilled oil that has been diverted to a designated recovery site accessible from shore.	1 skimming system 1 storage tank or bladder 1 hoses, pumps, fittings		2 shore responders		Strategy: Set up shoreside recovery tactic at general location depicted on map. Parking lot may be suitable for storage tank and equipment storage. Consideration for trailer/vehicle parking and tanker truck traffic is required.
		N/A	Testing Date	N/A	Tested	

Control Point Information

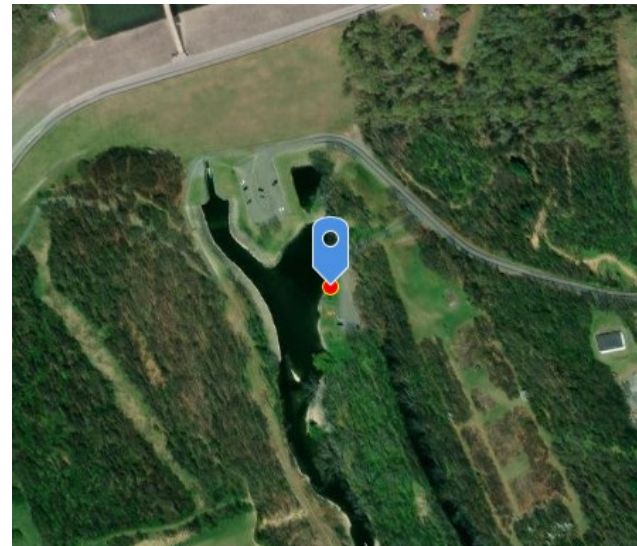
NRC Hotline: 800-424-8802

Address to Boat Launch:
1280 Palisades Drive, Leesport, PA 19533

Protection Description: The strategy for this location is to anchor a boom along shoreline (tree) to capture oil in slack areas. Staging area for all protection strategies available as boat ramp large enough to deploy assets.

Resources Protected

Fish	Catfish, Perch, Sunfish, Carp, and Bass.
Birds	Duck, Goose, Woodpecker, Hummingbird, Swallow, Jay, Robin, and various other species.
Threat/End. Species	Monarch butterfly, Tricolored bat, Little brown bat, Bald Eagle, Indiana bat, Northern long-eared bat, and Bog Turtle. No critical habitats found.
Cultural/Historical Resources	Located just south of Blue Marsh Lake Dam and Part of the Greater Reading Trail System.
Human Use	Boat Ramp, Conservation Area, Infrastructure, Groundwater Source, Recreation.
Land Management	U.S. Army Corp of Engineers, Berks County
Riverine	Silty mud/gravel riverbed with gently sloping bank consisting of loose vegetation.



Maxar | Esri Community Maps Contributors, PSU Office of Ph... Powered by Esri

GPS coordinate location for control point boat launch. Access point near Red Bridge Recreational Area.



There is no designated boat ramp, but due to the gently sloping nature of the banks (as shown above) a vessel can easily be carried in from the banks.



Location of staging area with large amount of space able to accommodate multiple vehicles. There is a strong current coming out of blue marsh dam outfall allowing for a natural hydraulic backflow area for collection.

Navigational Hazards

Lake and river conditions such as flow rate and flood stage vary depending on the time of year and heavy rain or snowfall. If ice is present GRP tactics and strategies must be reevaluated. Vessel operators should have local knowledge and experience operating in riverine environments.

Special Considerations

Survey site prior to deployment and modify deployment tactics and techniques as appropriate based on observed river conditions. Upriver dam events (Blue Marsh Creek or Kernsville) may impact river conditions (overall flow and/or current velocity). Discussions with other organizations regarding scheduled dam events may be warranted in a deployment response.