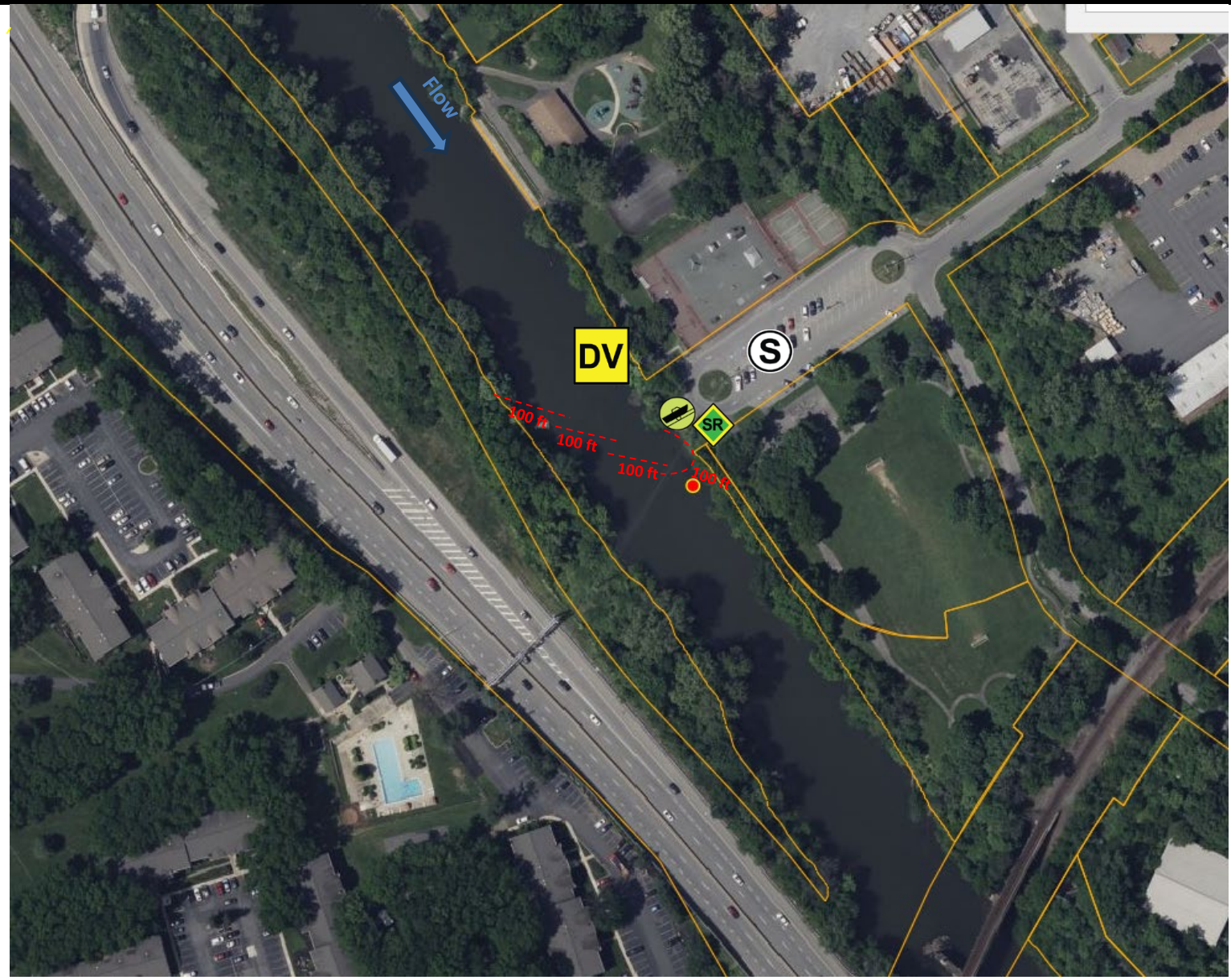


Tactics Legend

- DF** Deflection Booming
- DV** Diversion Booming
- EX** Exclusion Booming
- FO** Free Oil Recovery
- PR** Passive Recovery
- SR** Shoreside Recovery
- S** Staging Area
-  Boat Ramp
-  Kayak Ramp
-  Railroad
-  Protected-Water Boom
-  Protected-Water Boom (Ebb Tide)
-  Snare/ Sorbent Boom



Equipment - All Tactics

Boom(ft)	400
Boom Skirt (in)	6
Marine anchors	6
Shore anchors	2
Sorbent Boom(ft)	0
FO Recovery Sys	0
Shore Responders	4
Boat Responders	4
Boats	2



Version
12/03/2024

Tactics Deployment, Responder Safety, and GRP Data Information

Always consider on-scene conditions before deploying GRP tactics. Responder safety should always be the priority.
Vessel Requirements: Utilize vessel capable of operating in river depth conditions less than 5 feet. Suitable boat launch and direct backup access area for boat trailer as indicated above.

Location Information

Latitude: 40.34887764805801
Longitude: -75.95456361611349
State: Pennsylvania

Tactic #	Purpose	Response Equipment	Deployment Resources	Deployment Notes
DV-01 	Redirect spilled oil from one location or direction of travel to a specific site for recovery.	400 ft protected water boom 6 marine anchor system 2 shoreline anchor system	4 shore responders 2 response boats 2 boat operators 2 boat crew (min)	Anchor Type: Danforth 14, Shoreline anchor points. Strategy: Deploy boom as depicted to divert incoming oil to the collection site. Deploy shoreside anchor first. Single anchor system (rebar or U-posts) along shoreline with standard deployment into riverbed. Utilize 6" skirt boom due to shallow water depth. Anchor every 100' section on either end. Anchor shore side recovery skirt boom every 100'. Adjust configuration as necessary to reduce entrainment.
		N/A	Testing Date	
SR-01 	Remove spilled oil that has been diverted to a designated recovery site accessible from shore.	1 skimming system 1 storage tank or bladder 1 hoses, pumps, fittings	2 shore responders	Strategy: Set up shoreside recovery tactic at general location depicted on map. Parking lot east of boat launch may be suitable for storage tank and equipment storage. Consideration for boat trailer/vehicle parking and tanker truck traffic is required.
		N/A	Testing Date	

Control Point Information

NRC Hotline: 800-424-8802

Address to Boat Launch:
Stonecliff Recreation Area, 1200 Monroe Street, Reading, PA 19601

Gate Access Information:
Schuylkill River Greenways (484-945-0200 or info@schuylkillriver.org)

Protection Description: The strategy for this location is to anchor a boom along shoreline (tree) to capture oil in slack areas. Staging area for all protection strategies available as boat ramp large enough to deploy assets.

Resources Protected

Fish	Catfish, Perch, Sunfish, Carp, and Bass.
Birds	Duck, Goose, Woodpecker, Hummingbird, Swallow, Jay, Robin, and various other species.
Threat/End. Species	Monarch butterfly, Tricolored bat, Little brown bat, Bald Eagle, Indiana bat, Northern long-eared bat, and Bog Turtle. No critical habitats found.
Cultural/Historical Resources	Located in Stonecliffe Recreation Area. Part of the Schuylkill River National and State Heritage Area.
Human Use	Boat Ramp, Conservation Area, Infrastructure, Groundwater Source.
Land Management	Schuylkill River Greenways
Riverine	Silty mud/gravel riverbed with a gently sloped bank consisting of loose vegetation.



GPS coordinate location for control point boat launch. Access point near Stonecliff Recreation Area.



Potential staging area with lots of space for collection, staging, and treatment located in a large flat popularly used park area located along Montgomery Street.



Concrete area along Montgomery Street, to the left of potential staging area, that could handle the launch of small craft only.

Navigational Hazards

Lake and river conditions such as flow rate and flood stage vary depending on the time of year and heavy rain or snowfall. If ice is present GRP tactics and strategies must be reevaluated. Vessel operators should have local knowledge and experience operating in riverine environments.

Special Considerations

Survey site prior to deployment and modify deployment tactics and techniques as appropriate based on observed river conditions. Upriver dam events (Blue Marsh Creek or Kernsville) may impact river conditions (overall flow and/or current velocity). Discussions with other organizations regarding scheduled dam events may be warranted in a deployment response.