



Department of  
Environmental  
Conservation

# New York State Crude Oil Spill Inland GRP Update

October 13, 2016

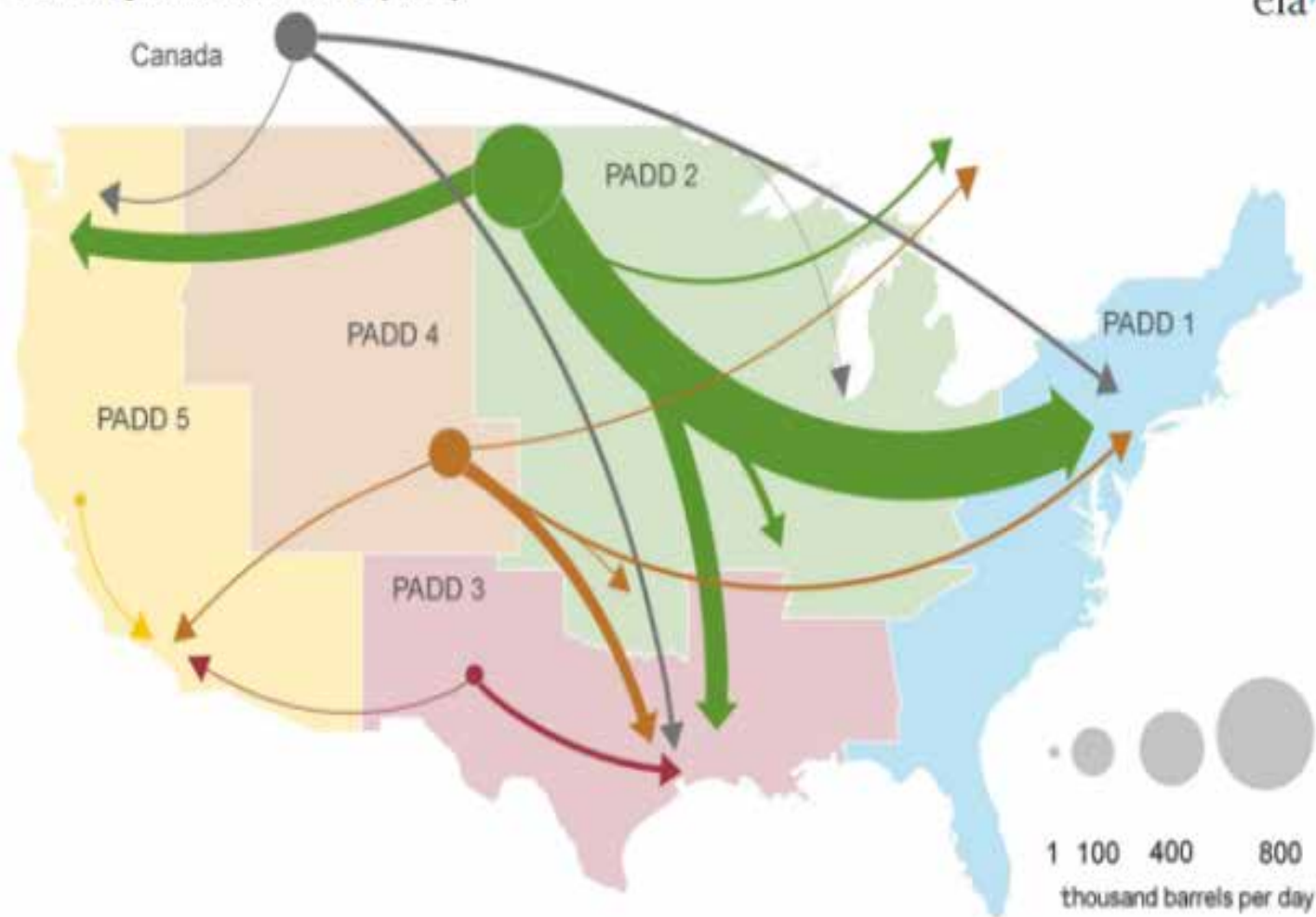
Crude-by-rail movements (2010)



Canada



# Crude-by-rail movements (2014)



In response to this large increase in crude-by-rail traffic, the Governor of New York issued Executive Order 125 directing state agencies to strengthen the state's preparedness for incidents involving crude oil transportation. New York State's (NYS) Department of Environmental Conservation (DEC), in collaboration with the Department of Homeland Security & Emergency Services and Department of Health, are leading a multi-stakeholder effort to develop Inland GRPs for the 21 NYS counties currently impacted by crude-by-rail transportation.



# New York State's Inland Geographic Response Plans

Brought to you by.....

Kirsten Anderson<sup>1</sup>, Thomas Festa<sup>2</sup>, Dennis Farrar<sup>3</sup>, Kyle Kolwaite<sup>4</sup>, Scott Stanton<sup>4</sup>, Peter Alberti<sup>4</sup>, Logan Reid<sup>4</sup>, Rob Schrader<sup>5</sup>, Jason Maddox<sup>5</sup>, V. Lyle Trumbull<sup>4</sup>

<sup>1</sup>NYS Dept. of Environmental Conservation, <sup>2</sup>NYS Dept. of Transportation, <sup>3</sup>HGA, <sup>4</sup>OBG, <sup>5</sup>Gallagher Marine Systems



# GRP Development

A tiered approach was used to develop NYS GRPs:

**Tier 1:** County steering committees were established consisting primarily of local first response agencies, as well as their state and federal partners. Utilizing Sensitive Resource Maps developed by NYSDEC, coupled with local steering committee input, location-specific response plans were identified.

# GRP Development

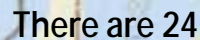
A tiered approach was used to develop NYS GRPs:

**Tier 2:** Location-specific response plans were drafted, reviewed by the NYSDEC and steering committees and set as final working “evergreen” documents, which are open for update/refinement at any time in the future.

# Priorities for Protection

- Sensitive Human Populations
- Environmentally Sensitive Areas
- Critical Infrastructure





There are 24  
GGRPs for the  
entire state.

## Site-specific GRP (many/county)

The Site-specific GRPs are the highest resolution response plans. In addition to sensitive environmental resources and booming strategies, these plans identify the locations of sensitive human receptors (e.g., schools, daycare centers, assisted living centers, etc.), critical infrastructure, and fire suppression assets.



There are **304** GRPs  
for the 850 miles of  
NYS railroad track

The backside of the GRP provides a general checklist of response considerations, a list of agency and industry notification numbers, the address for fire suppression resources, and phone numbers for each sensitive receptor facility within 0.5 miles of the tracks.

## Railroad Mile CP A 168 – Plattsburgh, Clinton Co.

Location: City of Plattsburgh, Clinton County  
Coverage Area: North Plattsburgh  
Railroad Mile Markers: CP A 168.64 to CP A 166.88

| CONTACT ALL NUMBERS BELOW      |                |
|--------------------------------|----------------|
| Local Fire & Police            | 911            |
| National Response Center (EPA) | (800) 424-8802 |
| DEC Spill Response             | (800) 457-7362 |
| Canadian Pacific Railroad      | (800) 716-9132 |
| Clinton Co Emergency Mgt.      | (518) 565-4792 |
| State Watch Center             | (518) 292-2200 |

### FIRE/EXPLOSION:

- IDENTIFY PRODUCT(S).
- NOTIFY POTENTIAL RECEPTORS AND RESPONSE CONTACTS.
- REQUEST STATE WATCH CENTER TO MOBILIZE FOAM ASSETS.
- EVAUATE 1/2 MILE.
- IF MORE THAN 3 CASES ON FIRE, EVAUATE RESPONDERS AND LET IT BURN.
- IF 3 OR FEWER CASES INVOLVED, DOES FIRE THREATEN POPULATIONS OR CRITICAL INFRASTRUCTURE?
- IF SO, FIGHT FIRE USING FOAM AND WATER. ADDITIONAL FOAM FROM STATE WATCH CENTER. UTILIZE HIGH VOLUME DRAFT POINTS IF POSSIBLE.
- IF NOT, LET IT BURN. APPLY COOLING WATER TO ADJACENT CARS VIA UNMANNED MONITOR.
- CONSIDER RUNOFF CONTROL MEASURES TO MINIMIZE HEALTH AND ENVIRONMENTAL IMPACTS.

### GEOGRAPHIC ACCESS

I-87 skirts the west side of the City. Exit 39 serves Cumberland Head and Plattsburgh City Beach, exit 38S serves the north end of the City, exit 37 serves downtown and central Plattsburgh, exit 36 serves southern Plattsburgh and the airport, and exit 35 serves the south end of Plattsburgh and Peru.

### RAILROAD ACCESS

Various secondary roads are located near the railroad, with nine crossings (seven north of the Saranack River and two south of the river).

### NOTIFICATION AND EVACUATION

#### DOWNWIND CONSIDERATIONS

- Bailey Avenue Elementary School: 518-563-2410
- Oak Street Elementary: 518-563-4950
- Seton Academy: 518-525-7306
- Stafford Middle School: 518-563-6800
- North Country Center for Independence: 518-563-9058
- Project Connect: Stephen Guenzi - 518-564-4071
- Little Saints Preschool: Wendy Briggs - 518-563-5651
- Helping Hands: Katie Calkins - 518-561-6361
- Little Angels: Cassandra Parrish - 518-961-3951
- YMCA of Plattsburgh and Y We Care: Elizabeth Stork-Ruffv - 518-561-4290
- Susie's Daycare: Susan St. John - 518-310-1499
- Circle of Friends: Monique Worley - 518-561-4471
- Ruthie's Place: Ruth Guilbo - 518-563-2292
- CVPH Medical Center: 518-561-2000
- 75 Beekman St, Plattsburgh NY 12903

#### DOWNSTREAM CONSIDERATIONS

- City of Plattsburgh Administrative Contacts:
- City Highway Dept: 518-563-1120
- City Engineer: 518-563-7730
- WWTP: 518-561-7172

### ICP / STAGING

- Clinton County Sheriff's Office
- 25 McCarthy Dr, Plattsburgh NY 12901
- Plattsburgh City Beach
- 1 Beach Rd, Plattsburgh NY 12901
- Wilcox Dock
- 90 Cumberland Ave, Plattsburgh NY 12901
- Durkee Street Public Parking Lot
- 14 Durkee St, Plattsburgh NY 12901
- City Marina and Boat Launch
- 2 Dock St, Plattsburgh NY 12901
- Dock Street Boat Launch
- 4 Dock St, Plattsburgh NY 12901

### FIRE SUPPRESSION

- Local Foam Resources/High Volume Foam Trailer: Plattsburgh Fire Department - 65 Cornelia Street, Plattsburgh NY 12901

### WATER RESPONSE STRATEGIES

- Boom: Boom can be deployed from shoreline access points to protect sensitive shoreline areas in Cumberland Bay, and the Boat Basin marina south of the Saranack mouth. Shoreline access points on the GRP map are near roadways and could be used for recovery as well as boom deployment. Boats would be needed to tend the seaward ends of boom deployed from shore.
- Lake Champlain: Wilcox Dock (-73° 16' 22.56", 44° 42' 25.2")
- Saranack River: Mouth of Lake Champlain (-73° 16' 45.96", 44° 41' 59.64")
- Lake Champlain: Wisconsin St Park (-73° 18' 31.92", 44° 41' 27.96")
- Wilcox Dock: 9 Cumberland Ave, Plattsburgh NY 12901
- City Marina and Boat Launch: 2 Dock St, Plattsburgh NY 12901
- Dock Street Boat Launch: 4 Dock St, Plattsburgh NY 12901
- Peru State Launch: 3938 Rt 9, Plattsburgh NY 12901
- Port Kent Boat Launch: 1 NY-373, Port Kent, NY 12975
- Port Douglass State Launch: 48 Schuyler Rd, Keeseville NY 12944

### BERMING RESOURCES

- Department of Public Works: 518-563-1120 or 518-563-6841

### SITE AND SEASONAL CONSIDERATIONS

- Spills that migrate into the river and/or lake should be controlled and collected using boom and skimmers in open water. Primary and secondary water intakes should be protected. Contact City Engineer for intake location(s).
- Notify NYDEC Spill Hotline for any wildlife impacts.

# Example of back of GRP - Notifications and Actions



Department of  
Environmental  
Conservation



To date, **523** booming opportunities have been identified and **352** have been field-verified





# BALLSTON SPA, SARATOGA COUNTY



## Legend

-  BOOMING  
 WATER FEATURE  
 ANCHOR  
 PHOTO

## Location

|                          |  |
|--------------------------|--|
| Water Body Name          | BALLSTON CREEK<br>(GRP 28A)            |
| Water Body Type          | CREEK                                  |
| Parking/Staging Location | 69 OUTLET ROAD<br>1000' WEST OF BRIDGE |
| Booming GPS Location     | 42° 57' 24.5766",<br>-73° 50' 53.2098" |
| Distance From Track      | 2000' WNW                              |



## Proposed Strategy

| Strategy Type                  | Degree of Difficulty                     | Implementation  | Considerations  |
|--------------------------------|--|---|---|
| Collection Booming<br>2 - 100' | Moderate - OSRO implementation suggested | 4-person crew, 2 - 100' Boom, anchors, stakes, jon boat<br><br><b>Collection Boom</b> - Southside deployment angled (>30°) from road southwest into vegetated mass.<br><b>Secondary Collection Boom:</b> "U" shaped deployment on north side of bridge. | Traffic<br>Slips/Trips/Falls<br>3-5' Water Depth<br>Slow to no current observed |

## Additional Notes

Ballston Lake is a drinking water source. Dry hydrant located on northwest side of Outlet Rd bridge.

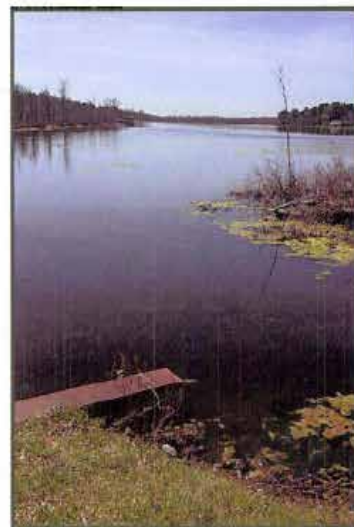
| Resources Potentially at Risk             |          |
|---|----------|
| Ecological (within 1 mile)                | Present? |
| General Fish and Wildlife Aquatic Mammals | Yes      |
| Aquatic Mammals                           | Yes      |
| Freshwater Wildlife                       | Yes      |
| Baitfish                                  | Yes      |
| Resident Fish                             | Yes      |
| Salmonoids (anadromous)                   | No       |
| Shellfish                                 | No       |
| Reptiles and Amphibians                   | Yes      |
| Hérons & Other Wading Birds               | Yes      |
| Marine Birds                              | No       |
| Shorebirds                                | Yes      |
| Raptors                                   | Yes**    |
| Sensitive Habitat                         | Yes      |
| Special Management or Protection Area     | Yes      |
| Cultural Resources                        | No       |
| Tribal Lands and/or Resources             | No       |
| Schools or Daycares                       | No       |
| Cultural Resources                        | No       |
| Tribal Lands and/or Resources             | No       |

\*\* denotes threatened or endangered species present

PHOTO LOCATION 1



PHOTO LOCATION 2





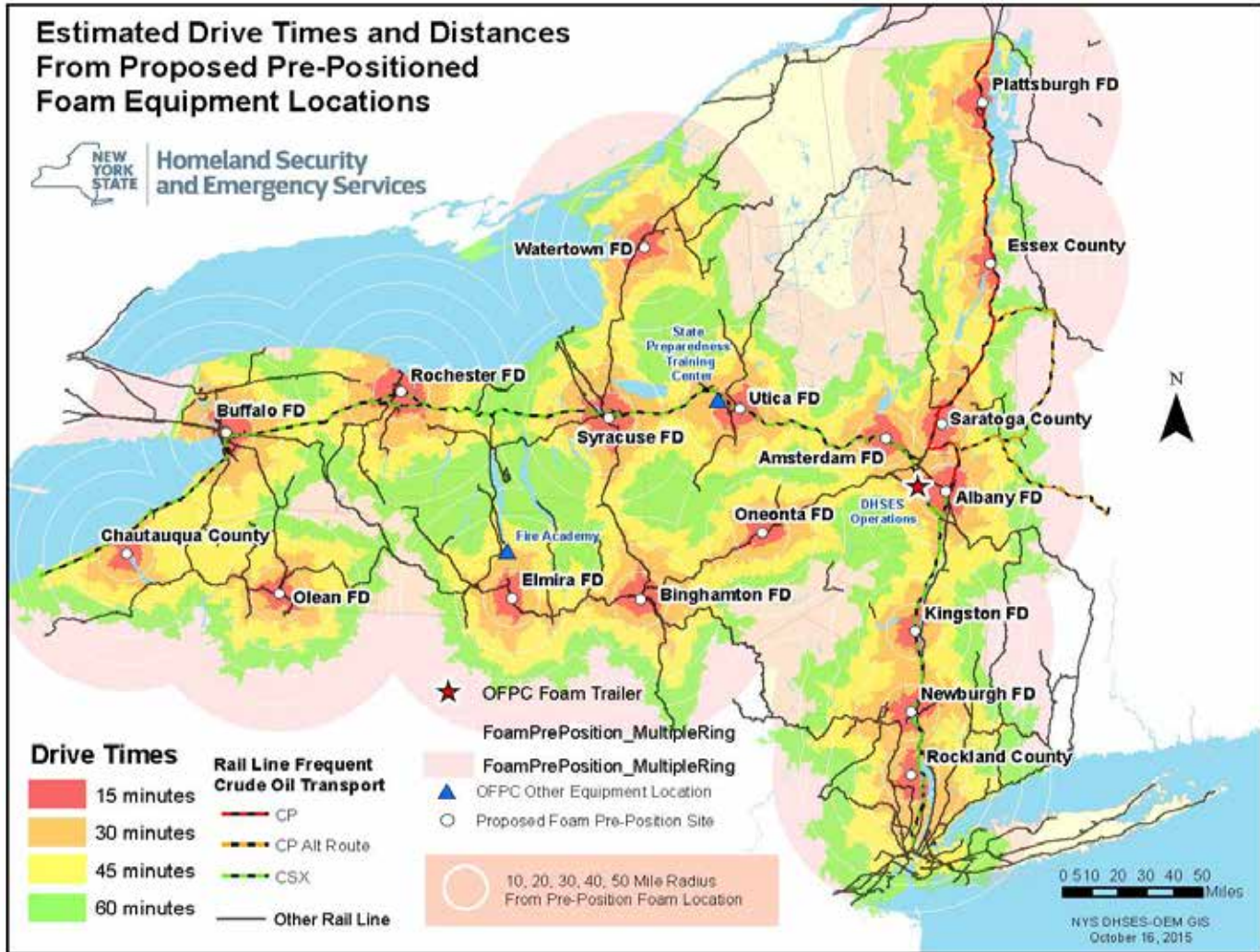
# Initial Response Equipment



# Estimated Drive Times and Distances From Proposed Pre-Positioned Foam Equipment Locations



Homeland Security  
and Emergency Services





# New York State's Inland Geographic Response Plans

Brought to you by.....

Kirsten Anderson<sup>1</sup>, Thomas Festa<sup>2</sup>, Dennis Farrar<sup>3</sup>, Kyle Kolwaite<sup>4</sup>, Scott Stanton<sup>4</sup>, Peter Alberti<sup>4</sup>, Logan Reid<sup>4</sup>, Rob Schrader<sup>5</sup>, Jason Maddox<sup>5</sup>, V. Lyle Trumbull<sup>4</sup>

<sup>1</sup>NYS Dept. of Environmental Conservation, <sup>2</sup>NYS Dept. of Transportation, <sup>3</sup>HGA, <sup>4</sup>OBG, <sup>5</sup>Gallagher Marine Systems



# Thank You

Kevin Hale, Chief  
Emergency Response Coordination  
NYS Department of Environmental Conservation

Email: [Kevin.Hale@dec.ny.gov](mailto:Kevin.Hale@dec.ny.gov)

Phone – 518-402-9583

Cell – 518-281-7347

24 Hour DEC Dispatch – 800-457-7362



Department of  
Environmental  
Conservation