

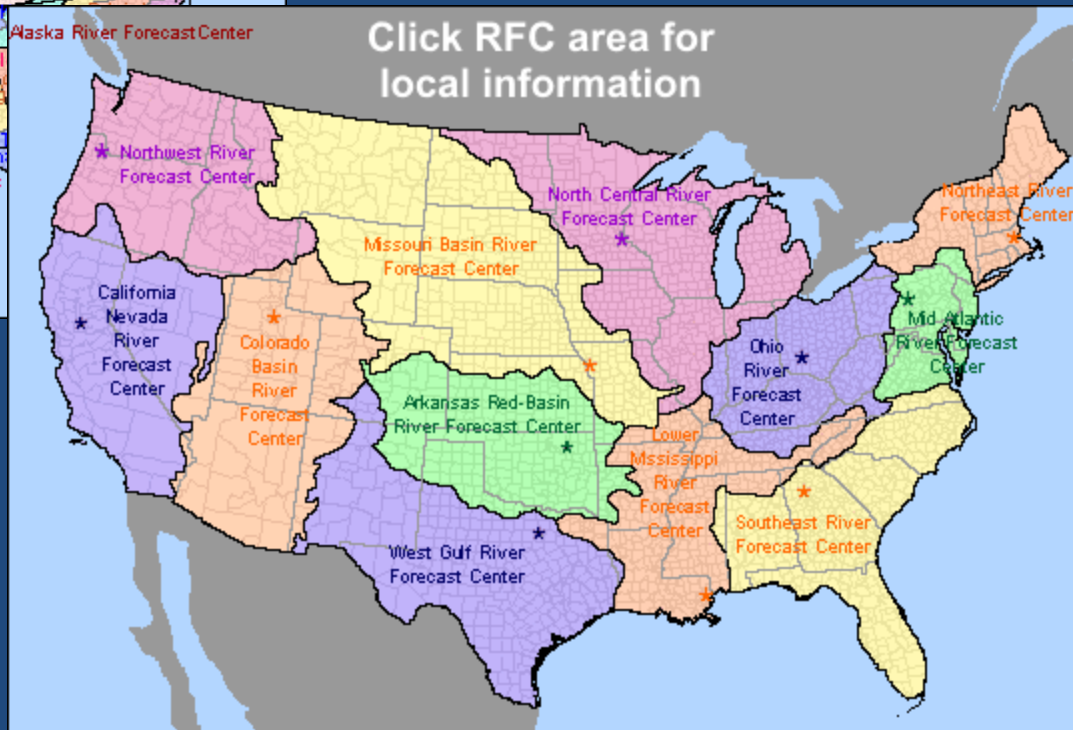
National Weather Service

Jennifer McNatt

Southern Region Headquarters

Regional Operations Center

NWS Overview



NWS Overview

- 24/7, Routine forecasts
 - Temperatures, rain chances
 - Aviation
 - Marine
 - Fire Weather
 - Hydrological
 - Watches, warnings, advisories

SPOT Forecasts

FORECAST:

IF CONDITIONS BECOME UNREPRESENTATIVE,
CONTACT THE NATIONAL WEATHER SERVICE.

SPOT FORECAST FOR DESOTO BLOCK 1550...USFS
NATIONAL WEATHER SERVICE NEW ORLEANS LA
805 AM CST FRI FEB 26 2016

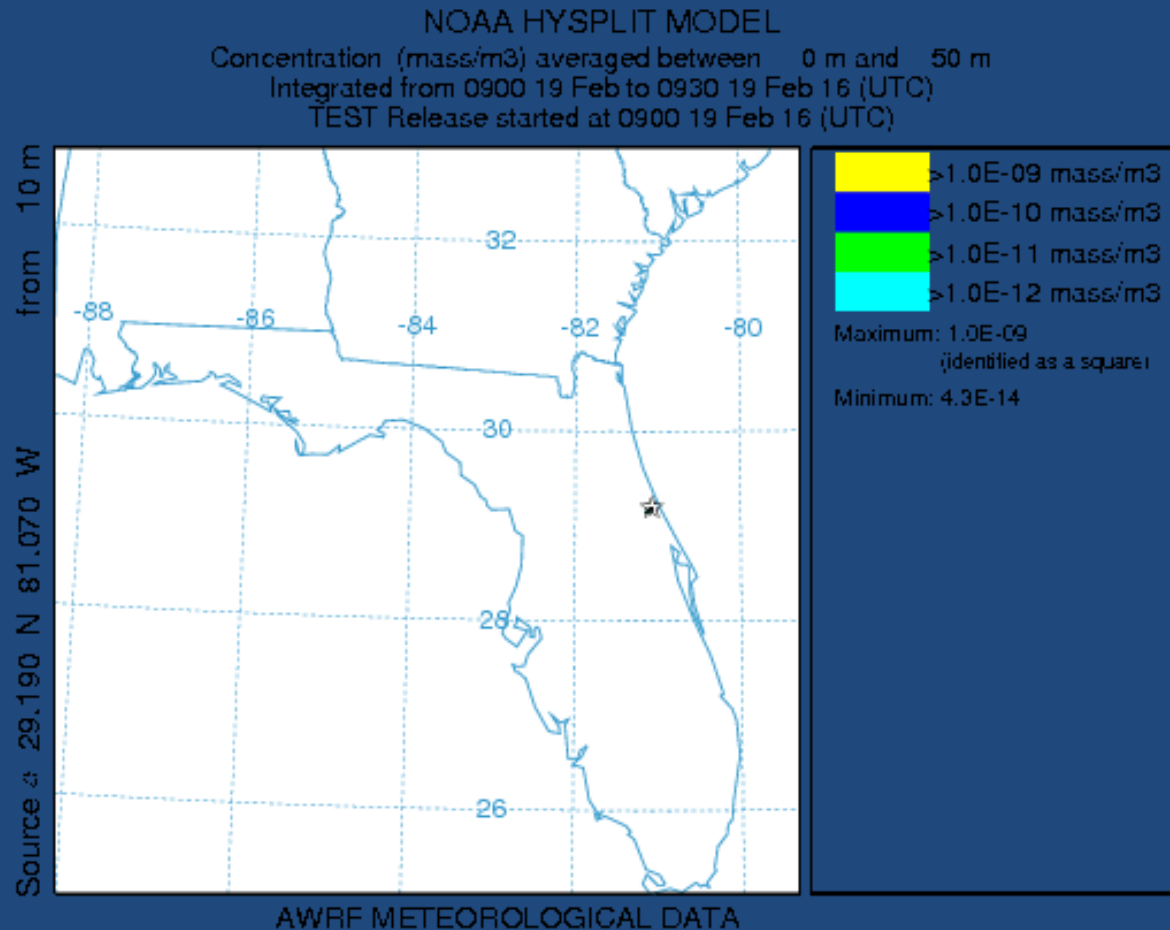
IF CONDITIONS BECOME UNREPRESENTATIVE...CONTACT THE NATIONAL WEATHER SERVICE.

DISCUSSION...HIGH PRESSURE OVER THE NORTHWEST GULF OF MEXICO AND PLAINS STATES WILL CONTINUE TO BUILD INTO THE REGION THROUGH SATURDAY AND MOVE EAST OF THE REGION ON SUNDAY.

TODAY...

[illegible]

Plume Modeling (Airborne Hazards)



Webpage Resources

- www.weather.gov
— Click on Office

The screenshot shows the National Weather Service Weather Forecast Office website for New Orleans/Baton Rouge. The page features a blue header with the NOAA logo and the text "National Weather Service Weather Forecast Office New Orleans/Baton Rouge". Below the header is a navigation bar with links for Home, Site Map, News, Organization, and a search bar. The main content area is divided into two columns. The left column contains a "Social Media Dashboard" with links to Twitter, Facebook, and YouTube, followed by a "Local forecast by 'City, St' or Zip Code" section with a search bar and a "Go" button. Below this are links for "XML RSS Feeds", "Current Hazards", "Local", "Nationwide", "Storm Pred. Center", "Submit Storm Report", and "Quick Brief". The "Forecasts" section includes links for "Local", "Forecast Discussion", "Activity Planner", "Graphical", "Tropical Weather", "Aviation Weather", "Marine Weather", "Interactive", and "Air Quality". The "Current Weather" section includes links for "Observations", "Satellite Images", "Rivers/Lakes", and "Hydrology". The "Radar Imagery" section includes links for "Nationwide", "Slidell", and "Mobile". The "Climate" section includes links for "Local", "National", and "More...". The "Weather Safety" section includes links for "Get Prepared", "Weather Radio", "SKYWARN", "Hurricane Prep.", "Storm Ready", and "Weather Criteria". The "Additional Info" section includes links for "Our Office", "Education/Outreach", "Weather School", "Brochures", "Models Page", "EM Quick Brief", "Fire Weather Quick Brief", and "Past Weather Events". The "Social Media" section includes a link for "Facebook". The right column features a "Top News of the Day" section with links for "February 23rd Tornado Outbreak Summary", "Weather Info on Your Device", and "Upcoming Skywarn Classes". Below this is a "Forecast" section with tabs for "Outlook" and "Climate". The "Outlook" tab is selected, showing a "Nice Weather through the Weekend" forecast for New Orleans/Baton Rouge. The forecast table includes columns for Today, Tonight, Saturday, Saturday Night, and Sunday, with icons for weather conditions, rain chance, and high/low temperatures. The "Today" forecast shows Sunny weather with a 0% rain chance and a high of 57 to 60. The "Tonight" forecast shows Clear weather with a 0% rain chance and a low of 32 to 38 N and 38 to 46 S. The "Saturday" forecast shows Sunny weather with a 0% rain chance and a high of 62 to 67. The "Saturday Night" forecast shows Mostly Clear weather with a 0% rain chance and a low of 35 to 42 N and 41 to 47 S. The "Sunday" forecast shows Partly Cloudy weather with a 0% rain chance and a high of 67 to 72. Below the forecast table is a "Show Caption" link. At the bottom of the page is a "Watches & Warnings" section with tabs for "Observations", "Forecast Graphics", "Rivers & Lakes", "Climate", and "Tropical". The "Forecast Graphics" tab is selected, showing a map of the New Orleans/Baton Rouge area with a green line indicating the forecast path. The map includes labels for McComb, Metairie, Baton Rouge, New Orleans, and Houma. To the right of the map is a legend for "Flood Warning", "Hazardous Weather Outlook", and "Read watches, warnings & advisories".

National Weather Service Weather Forecast Office
New Orleans/Baton Rouge

Home Site Map News Organization Search for: NWS All NOAA Go

Top News of the Day

- February 23rd Tornado Outbreak Summary
- Weather Info on Your Device
- Upcoming Skywarn Classes

Outlook Climate

New Orleans/Baton Rouge

Nice Weather through the Weekend

Today	Tonight	Saturday	Saturday Night	Sunday
Sunny	Clear	Sunny	Mostly Clear	Partly Cloudy
Rain Chance: 0%	Rain Chance: 0%	Rain Chance: 0	Rain Chance: 0	Rain Chance: 0%
Highs: 57 to 60	Lows: 32 to 38 N 38 to 46 S	High: 62 to 67	Lows: 35 to 42 N 41 to 47 S	High: 67 to 72

706 AM CST
Fri Feb 26 2016
National Weather Service
New Orleans/Baton Rouge, LA

Show Caption

Watches & Warnings Observations Forecast Graphics Rivers & Lakes Climate Tropical

Click on the map below for the latest forecast.

Read watches, warnings & advisories

Flood Warning

Hazardous Weather Outlook

Zoom Out

On-Site Support

- NWS can provide experts in an EOC/ICP
- Available on a case-by-case basis
- Trained meteorologists and hydrologists
- Relationship with local office?
- Reach back to Regional Operations Center if needed
- Exercise support as well!

Regional Weather Picture

*FEMA Region IV Threat Matrix Feb 22, 2016 - Feb 28, 2016

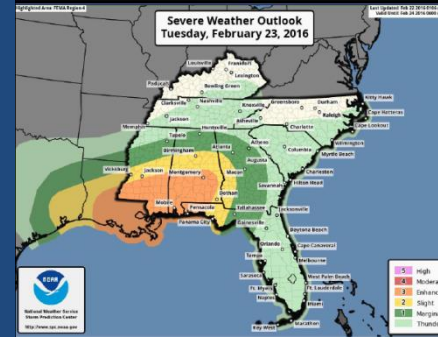
DAY/ THREAT	MON	TUE	WED	THU	FRI	SAT	SUN
Severe Storms		S MS, S AL, W FL Panhandle Central MS/AL, W GA, Central FL panhandle	SE GA, N&C FL, Central/ East NC/SC				
Heavy Rain / Flooding	MS, AL, GA, NC, SC						
Winter		W KY/TN (Late)					
River Flooding	NC/SC/GA/MS						

No Weather Threats Expected
 Very Common – Happens Often
 Common – Happens Frequently
 Uncommon – A Few Times a Year
 Rare – Once Every 1-5 Years
 Very Rare – Once Every 5-10 Years

For more details on the colors in the threat matrix refer to the last slide in this briefing.



Days 2 & 3 Severe Weather Outlook

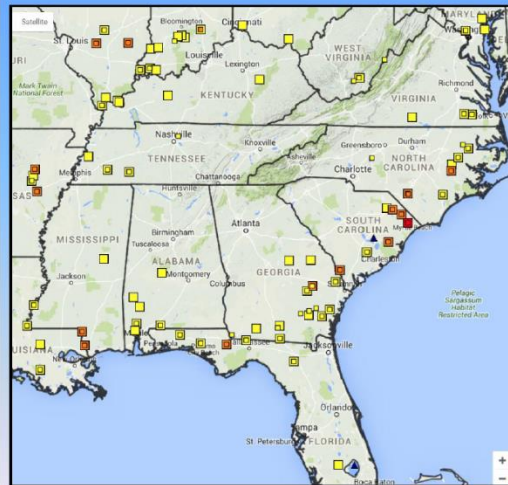


Enhanced risk of severe storms beginning Tuesday afternoon over S MS, S AL and the W FL Panhandle with a Slight risk extending into C MS/AL, W GA, and the Central FL Panhandle. Tornadoes, damaging winds, and large hail will all be possible through early Wednesday.

Slight risk of severe storms Wednesday over SE GA, N&C FL, and C&E NC/SC. Damaging winds, a few tornadoes, and some hail will be possible.



River Flood Status



- A few river gage sites are in minor flood stage in NC/SC/GA/MS
- No significant impacts

River Status	Observed	Forecast
No Flooding	Green	Green
Near Flood Stage	Yellow	Yellow
Minor Flooding	Orange	Orange
Moderate Flooding	Red	Red
Major Flooding	Purple	Purple

For the latest on river flooding: <http://www.srh.noaa.gov/rfcexp/main.php?fs=1>

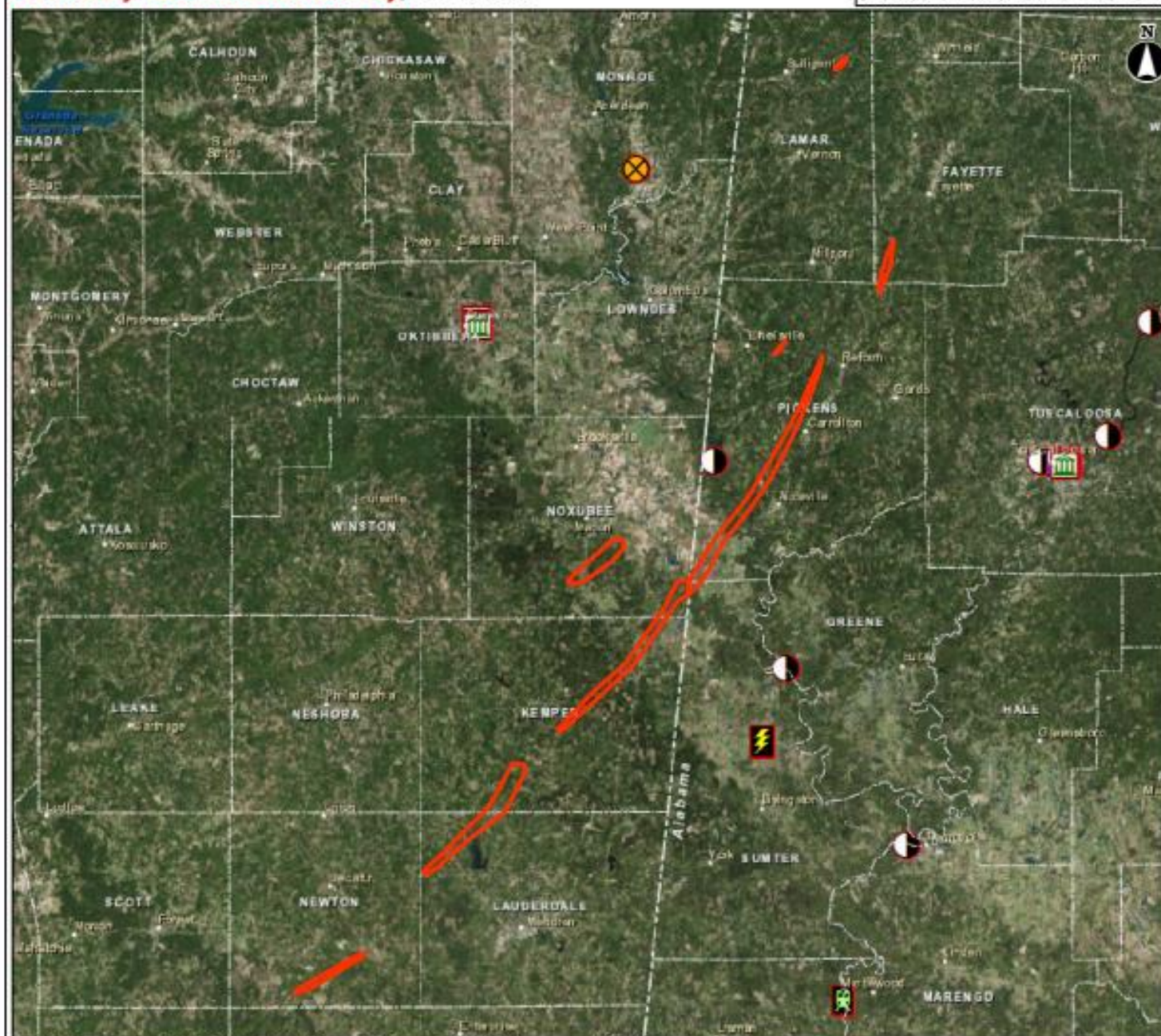
Preliminary Damage Paths

- FEMA HQ Requirement in 2015
 - Initial, best estimate polygon of potential tornado damage
 - When: catastrophic damage to homes, businesses or infrastructure, fatalities, national media attention
 - *Not for every tornado!*
 - GIS-shapefile available via a GIS service
 - Password protected
 - Timing: As soon as possible after a tornado occurs

Tornado Impact Map: (03 February 2016, 1000 EDT)

Preliminary Tornado Swath Overlay, MS and AL

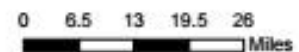
UNCLASSIFIED // FOR OFFICIAL USE ONLY



Data Layer / Map Description:
Depicts a reasonable worst-case damage swath due to a tornado as reported by NOAA/NWS using initial data from remote sensing technologies, trained spotters and other available information. The damage swath is preliminary only and may be updated by NOAA/NWS when additional data becomes available.

Impact Summary (All Swaths)
Estimated Affected Population: 4,621
Estimated Affected Housing Units: 1,432
(Data from ACS 2013 - 2015)

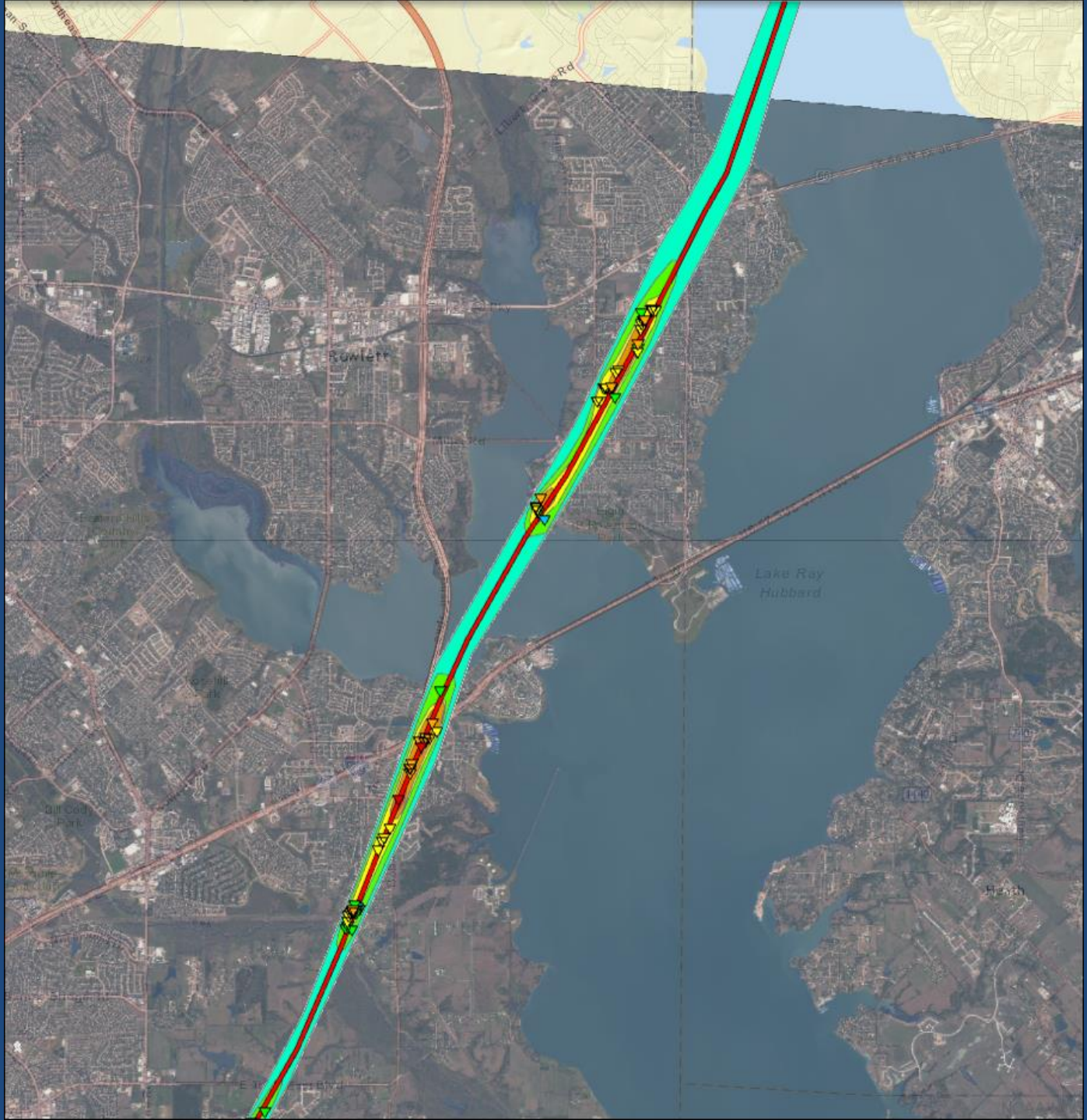
- NOAA Preliminary Damage Swath**
- Tornado Damage Swath
- DHS Infrastructure Asset List**
- Chemical and Hazardous Materials Industry
 - Commercial Facilities
 - Dams
 - Energy
 - Government Facilities
 - Transportation




Data Sources: FEMA, HSIP 2015, US Census, Esri, NOAA

High Resolution Satellite Imagery


- Different Sources
 - USGS
 - NOAA
 - Also aircraft imagery
- NWS can request the above for weather events







**Satellite Viewer**


Choose Date Range

Target Date: 

Date Buffer (days)  

Opacity: 75

SPoRT_Worldview_True Color



2016-01-15 17:41:33

2016-01-15 17:41:34

2016-01-15 17:41:34

2016-01-15 17:41:36

2016-01-15 17:41:36

Damage Points

- ▼ EF5
- ▼ EF4
- ▼ EF3
- ▼ EF2
- ▼ EF1
- ▼ EF0
- TSTM
- Other

300 m
1000 ft
Latitude:32.889425 Longitude:-96.547108





Satellite Viewer

Choose Date Range

Target Date:

Date Buffer (days)

Opacity:

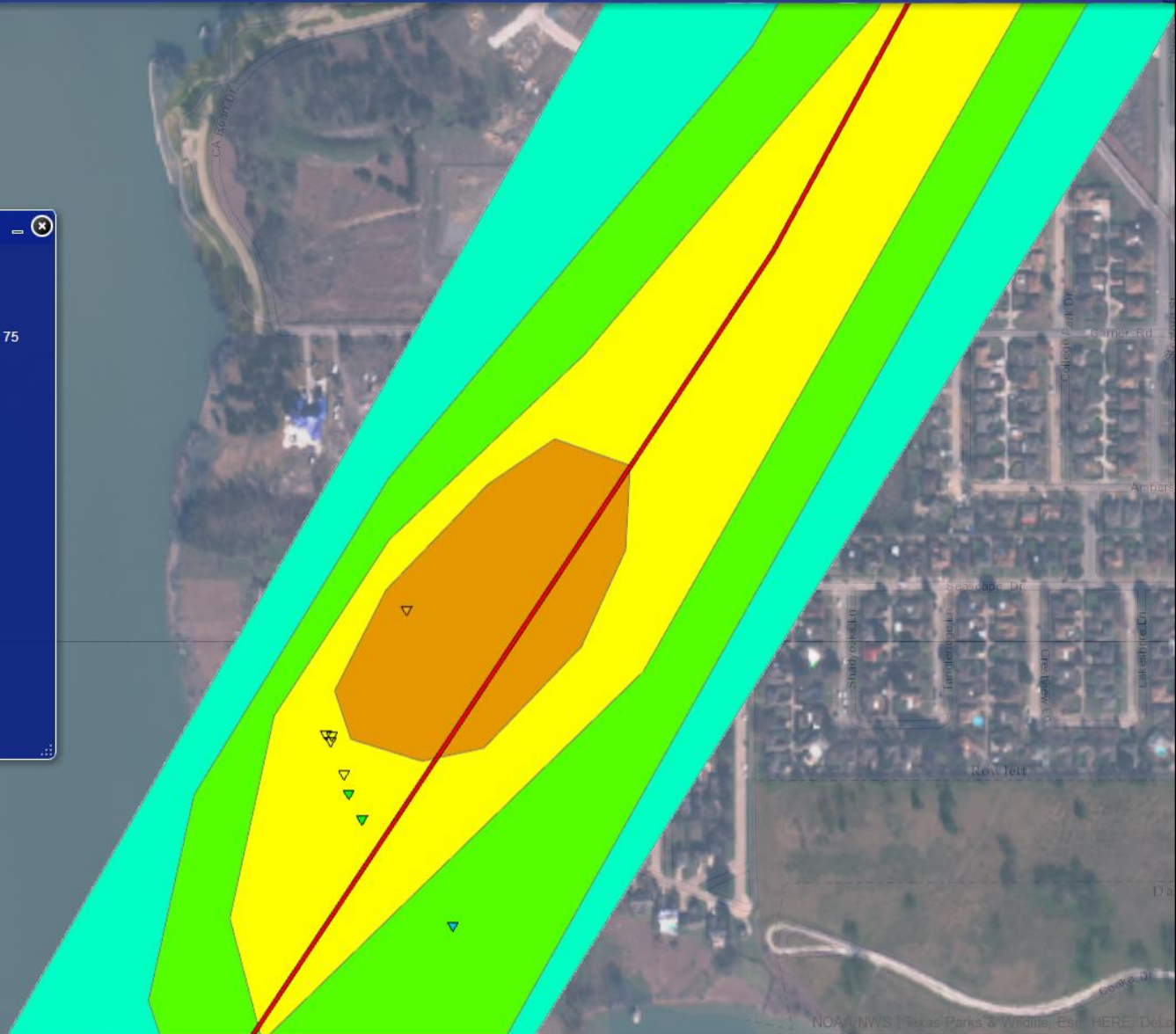
SPoRT_Worldview_True Color

2016-01-15 17:41:33
2016-01-15 17:41:34
2016-01-15 17:41:34
2016-01-15 17:41:36
2016-01-15 17:41:36

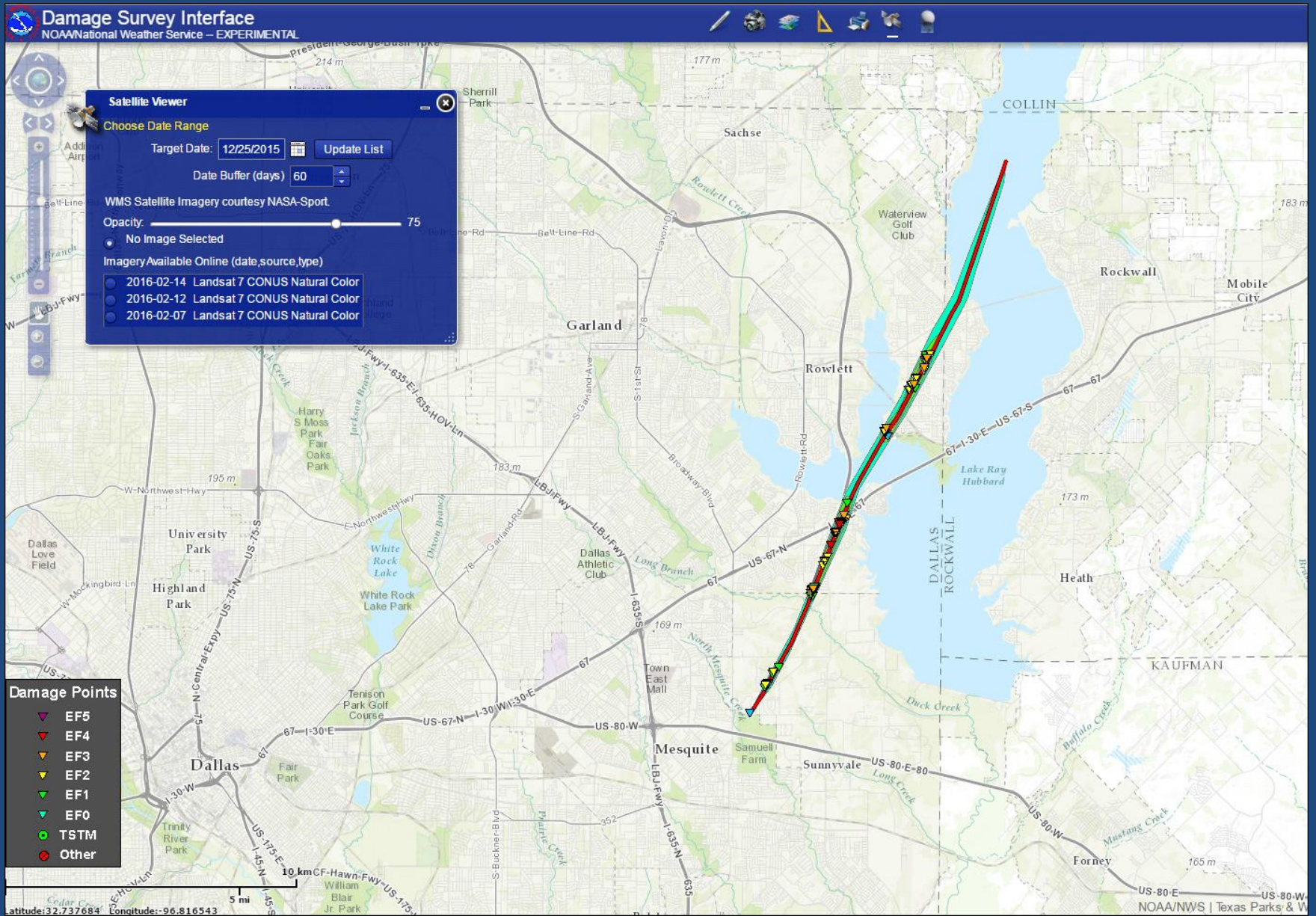
Damage Points

- EF5
- EF4
- EF3
- EF2
- EF1
- EF0
- TSTM
- Other

300 m
1000 ft
Latitude: 32.891172 Longitude: 96.544802



Damage Assessment Toolkit



Sources:

- Damage Assessment Toolkit:
<https://apps.dat.noaa.gov/StormDamage/DamageViewer/>
- For more information on satellite imagery and/or the preliminary damage path tool
 - NWS Southern Region ROC: 682-703-3747 or sr-srh.roc@noaa.gov



National Weather Service
Southern Region Headquarters
Regional Operations Center
Fort Worth, TX

Phone: (817) 978-1100 x147

E-mail: sr-srh.roc@noaa.gov

Web: <http://www.srh.noaa.gov>

facebook

<https://www.facebook.com/NWSSouthern> (**NEW link!!**)

twitter

@NWS_Southern_US https://twitter.com/NWS_Southern_US